

08CLACTON

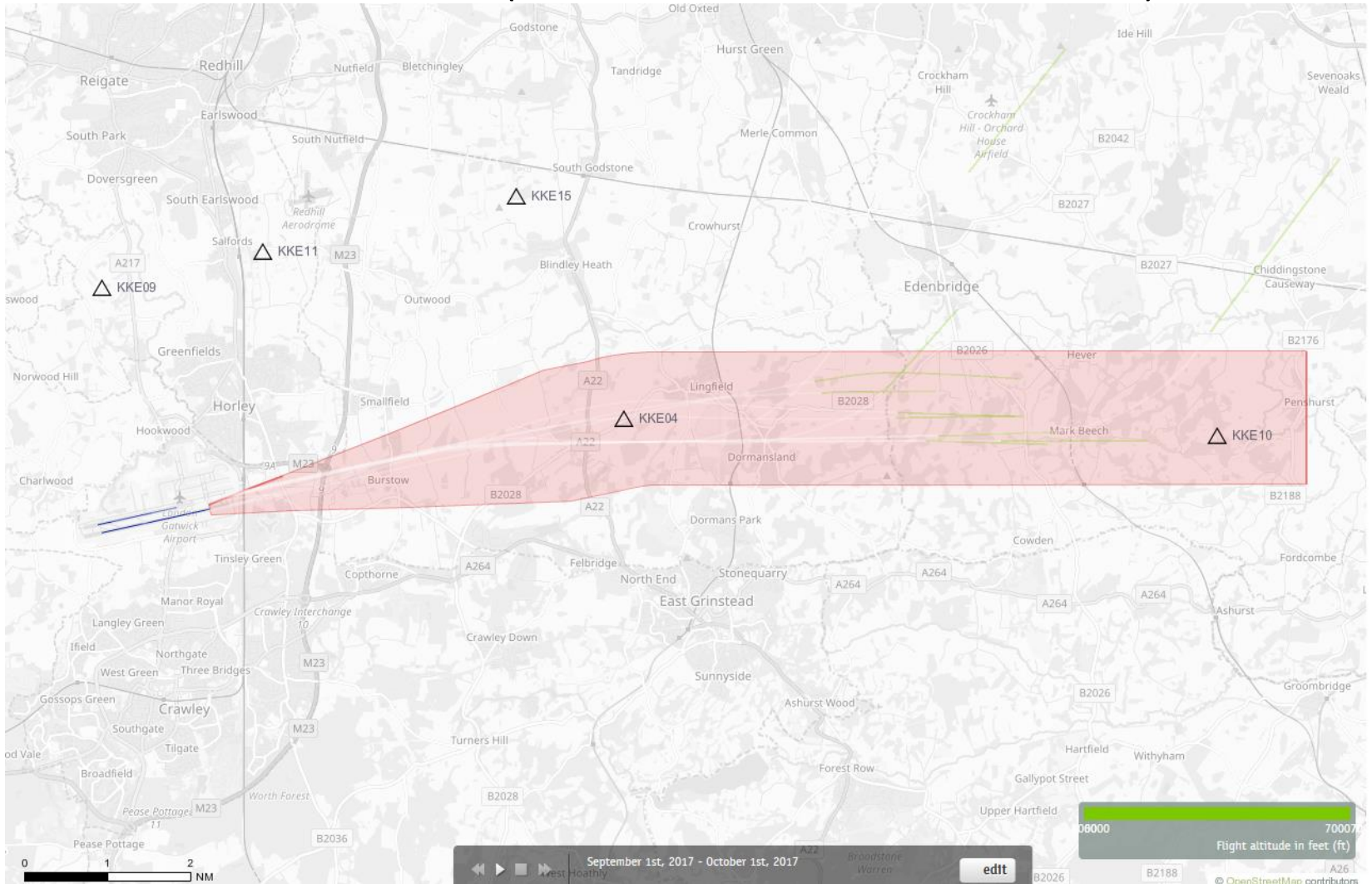
Route 5

Altitude Bands

6000-7000ft

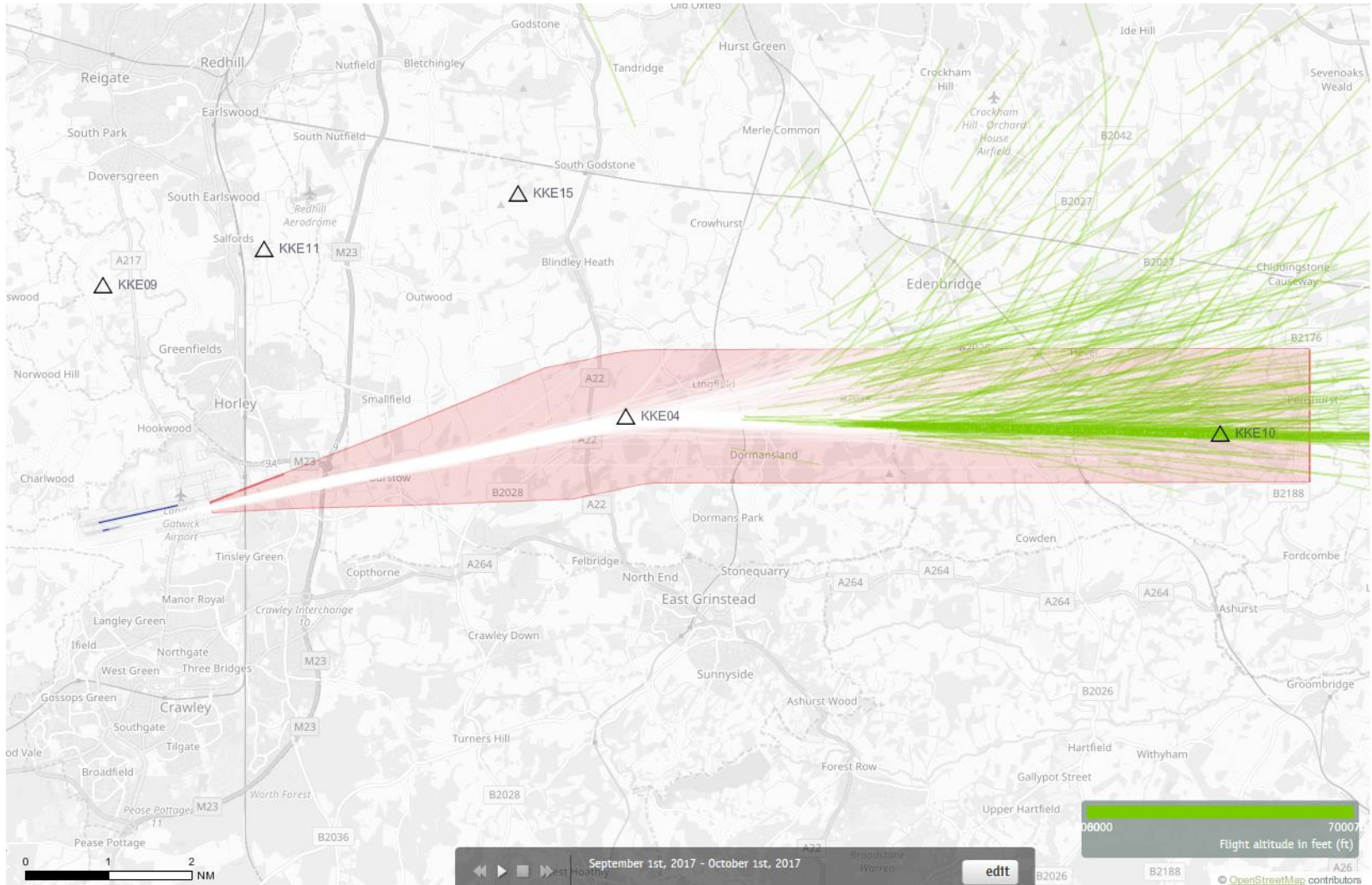
Post RNAV1 - Amendment

08CLN Departures 1st – 30th September 2017 6000-7000 feet (11 Aircraft – CONVENTIONAL ONLY)



Green plots show the points at which an aircraft was between 6000 and 7000ft altitude.

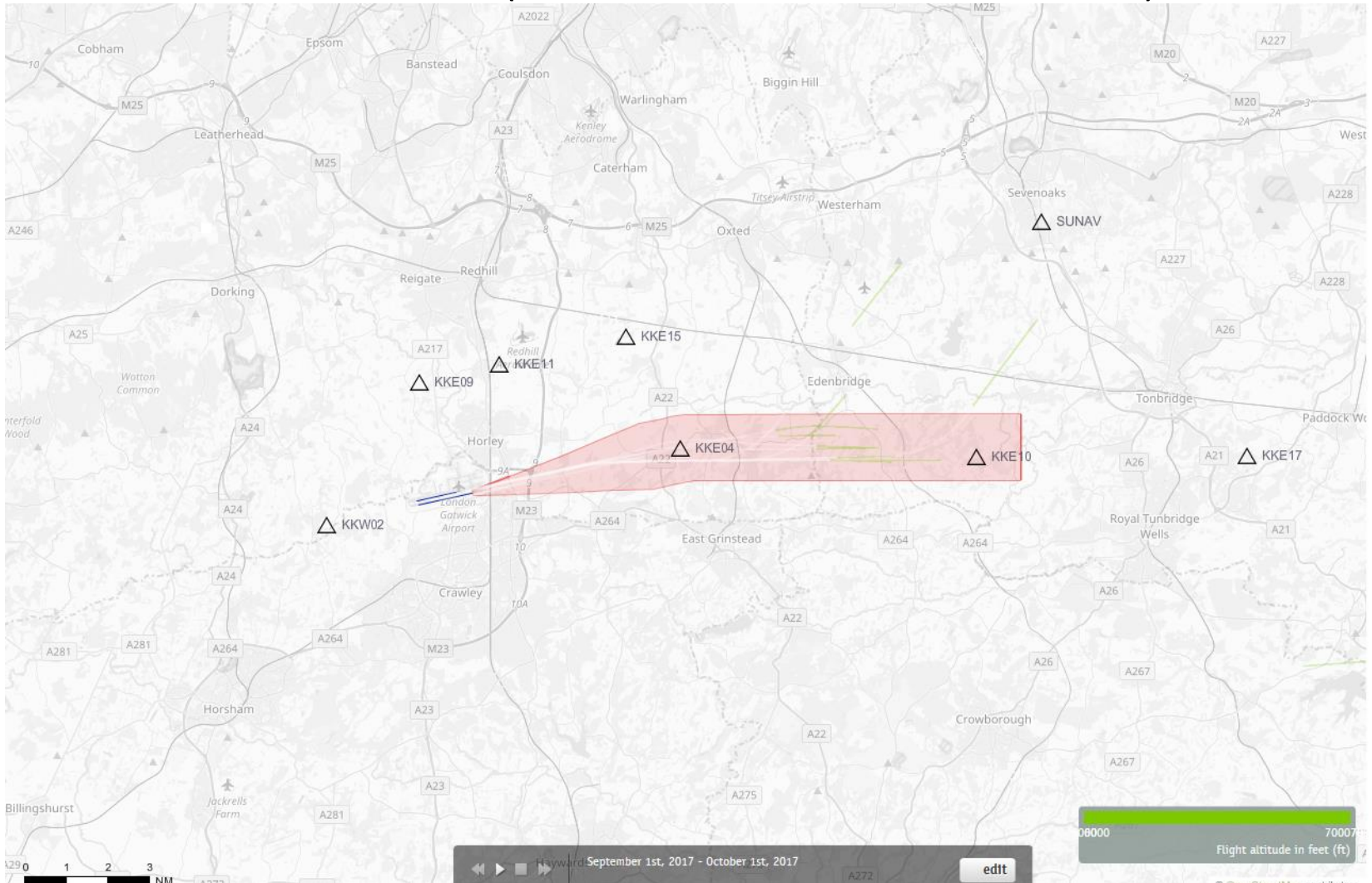
08CLN Departures 1st – 30th September 2017 6000-7000 feet (837 Aircraft – RNAV1 ONLY)



Green plots show the points at which an aircraft was between 6000 and 7000ft altitude.

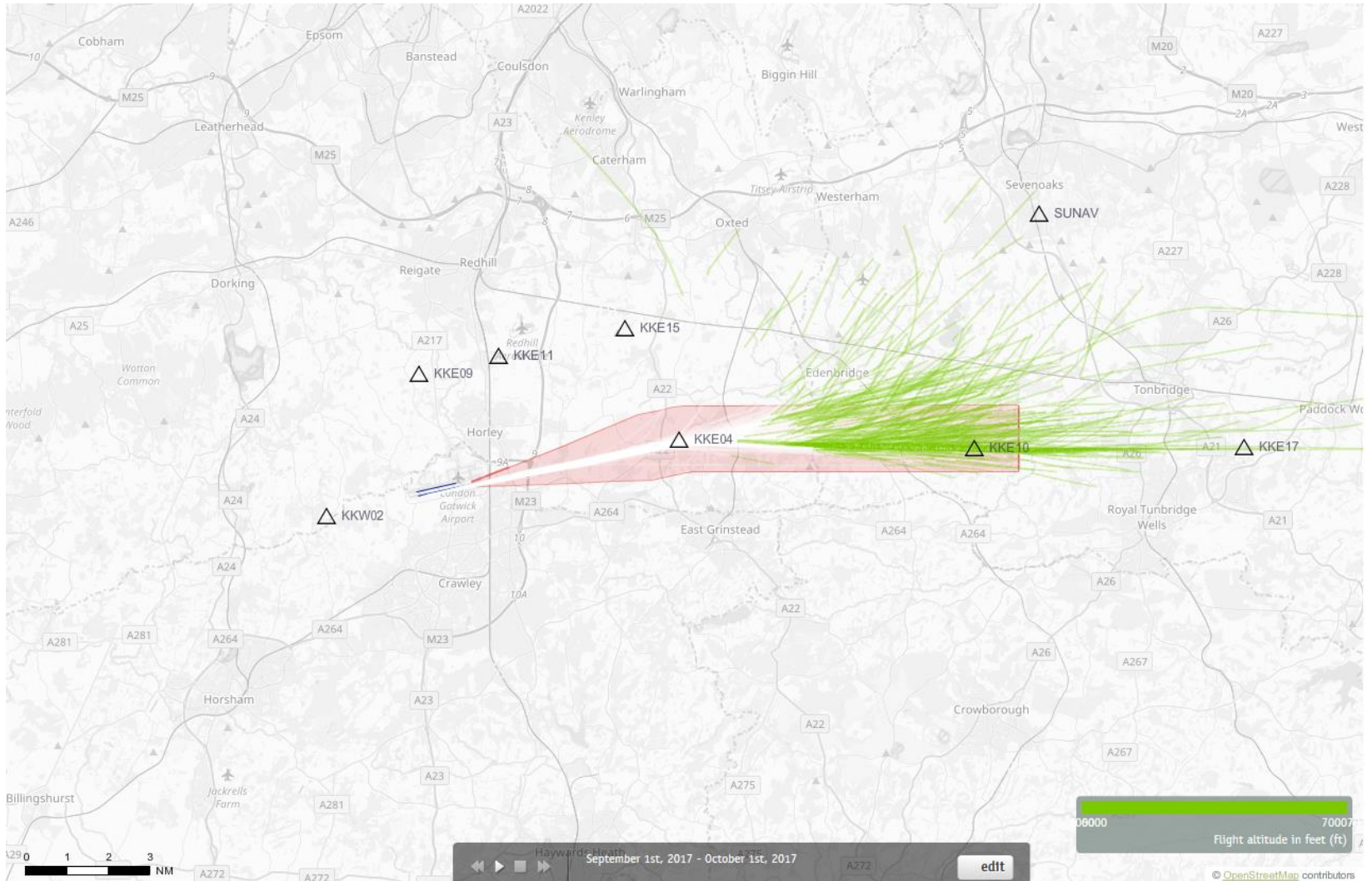
08CLN Departures 1st – 30th September 2017

6000-7000 feet (11 Aircraft – CONVENTIONAL ONLY)



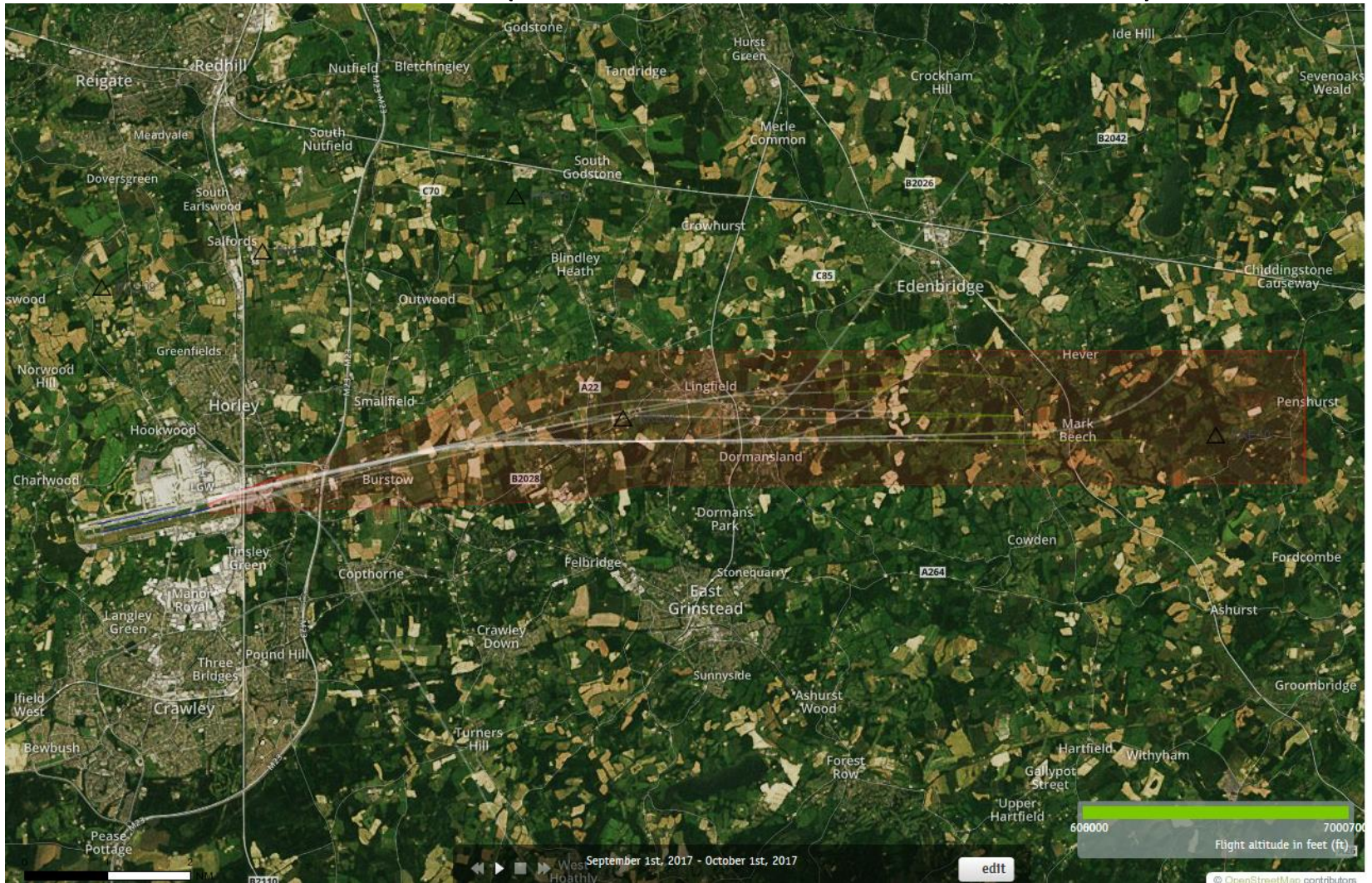
Green plots show the points at which an aircraft was between 6000 and 7000ft altitude.

08CLN Departures 1st – 30th September 2017 6000-7000 feet (837 Aircraft – RNAV1 ONLY)



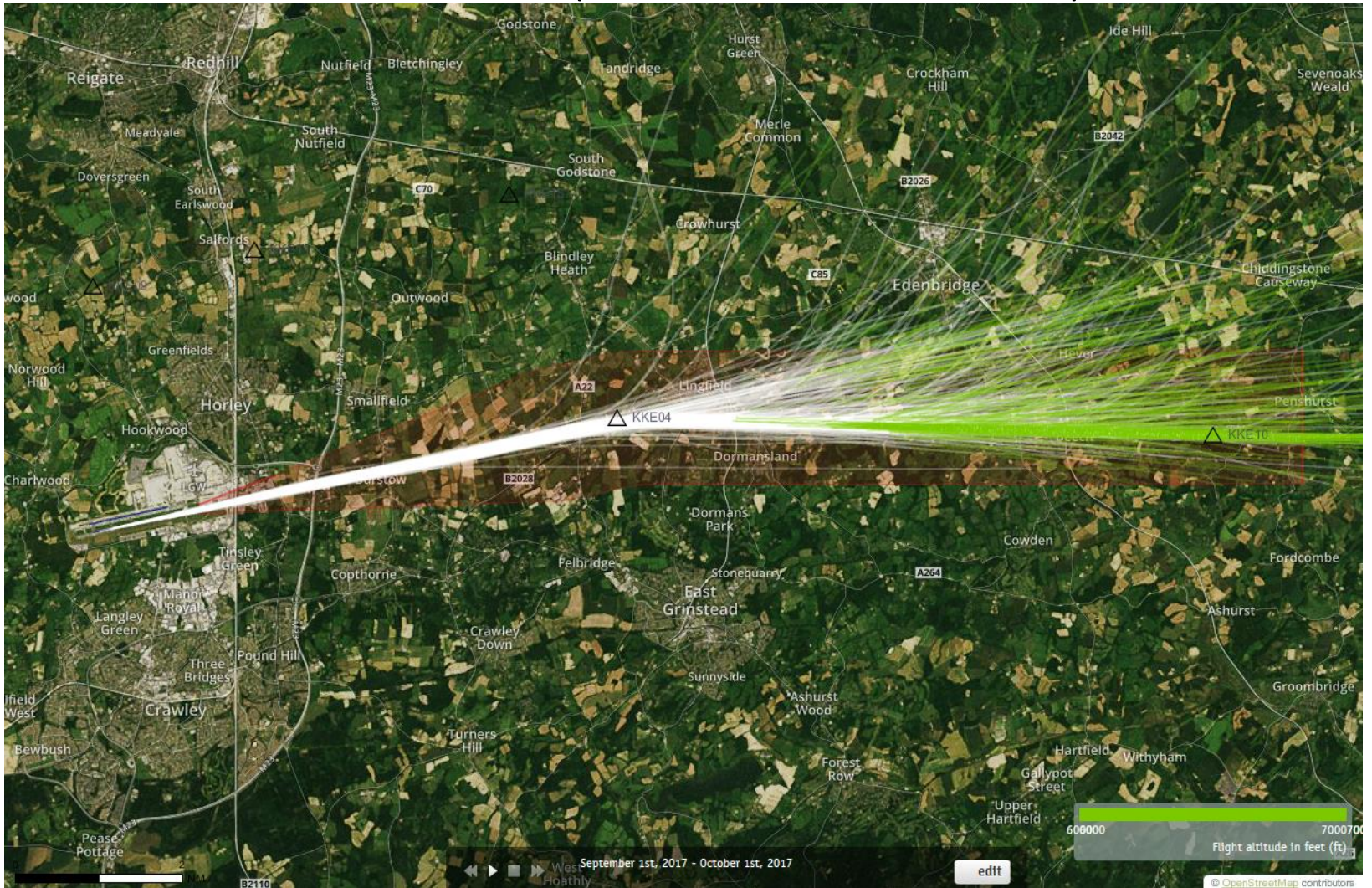
Green plots show the points at which an aircraft was between 6000 and 7000ft altitude.

08CLN Departures 1st – 30th September 2017 6000-7000 feet (11 Aircraft – CONVENTIONAL ONLY)



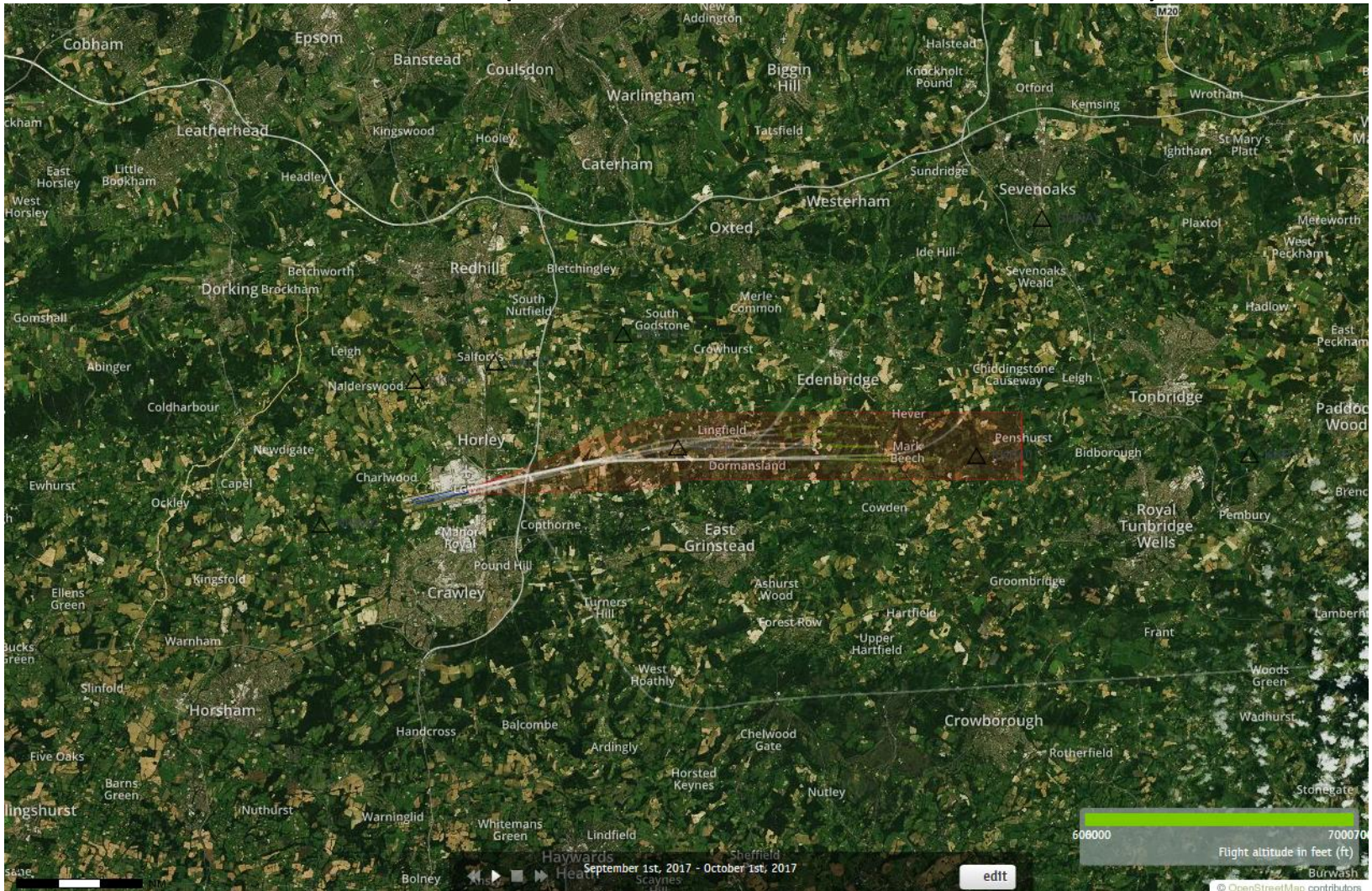
Green plots show the points at which an aircraft was between 6000 and 7000ft altitude.

08CLN Departures 1st – 30th September 2017 6000-7000 feet (837 Aircraft – RNAV1 ONLY)



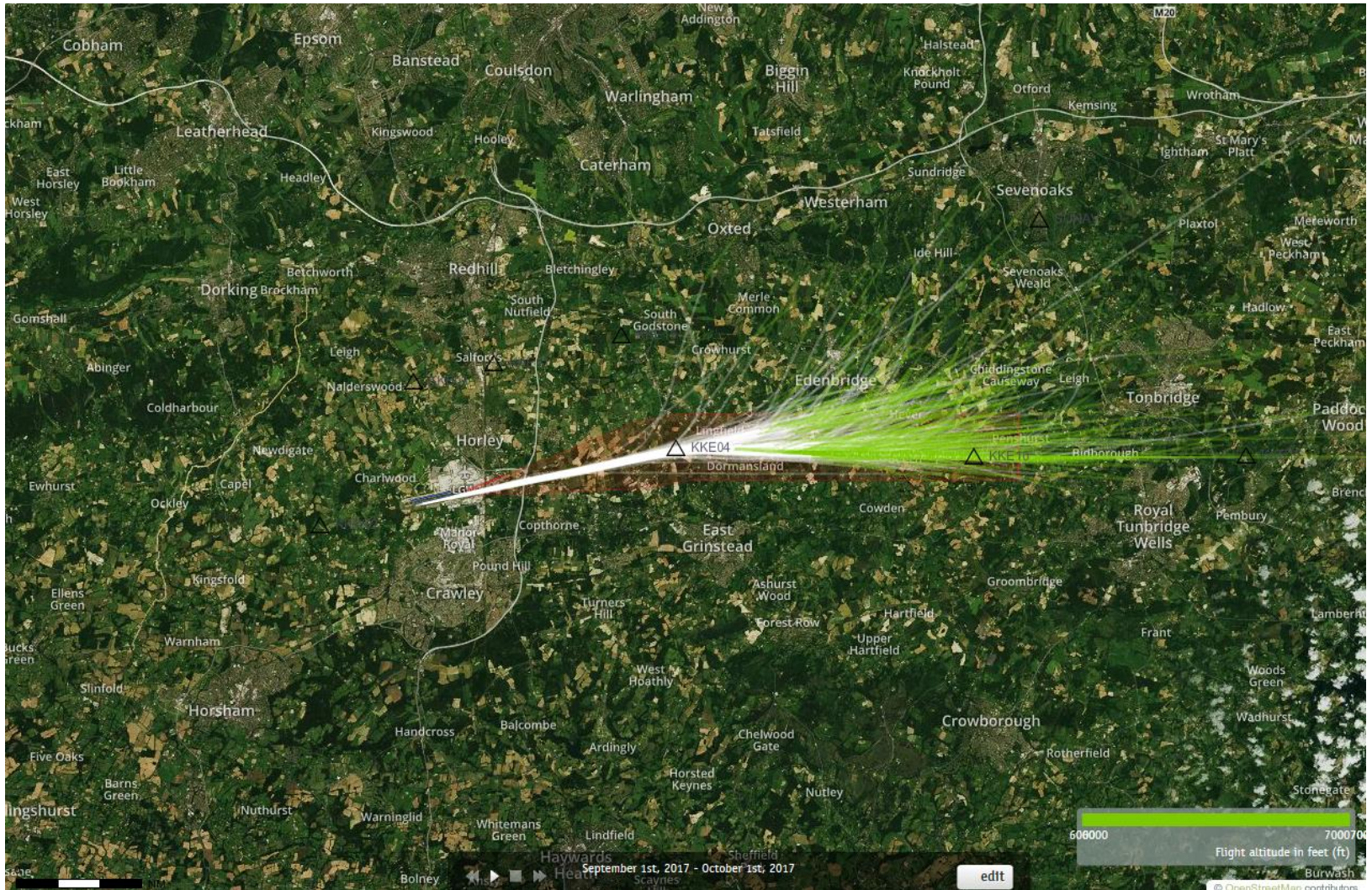
Green plots show the points at which an aircraft was between 6000 and 7000ft altitude.

08CLN Departures 1st – 30th September 2017 6000-7000 feet (11 Aircraft – CONVENTIONAL ONLY)



Green plots show the points at which an aircraft was between 6000 and 7000ft altitude.

08CLN Departures 1st – 30th September 2017 6000-7000 feet (837 Aircraft – RNAV1 ONLY)



Green plots show the points at which an aircraft was between 6000 and 7000ft altitude.