

08CLACTON

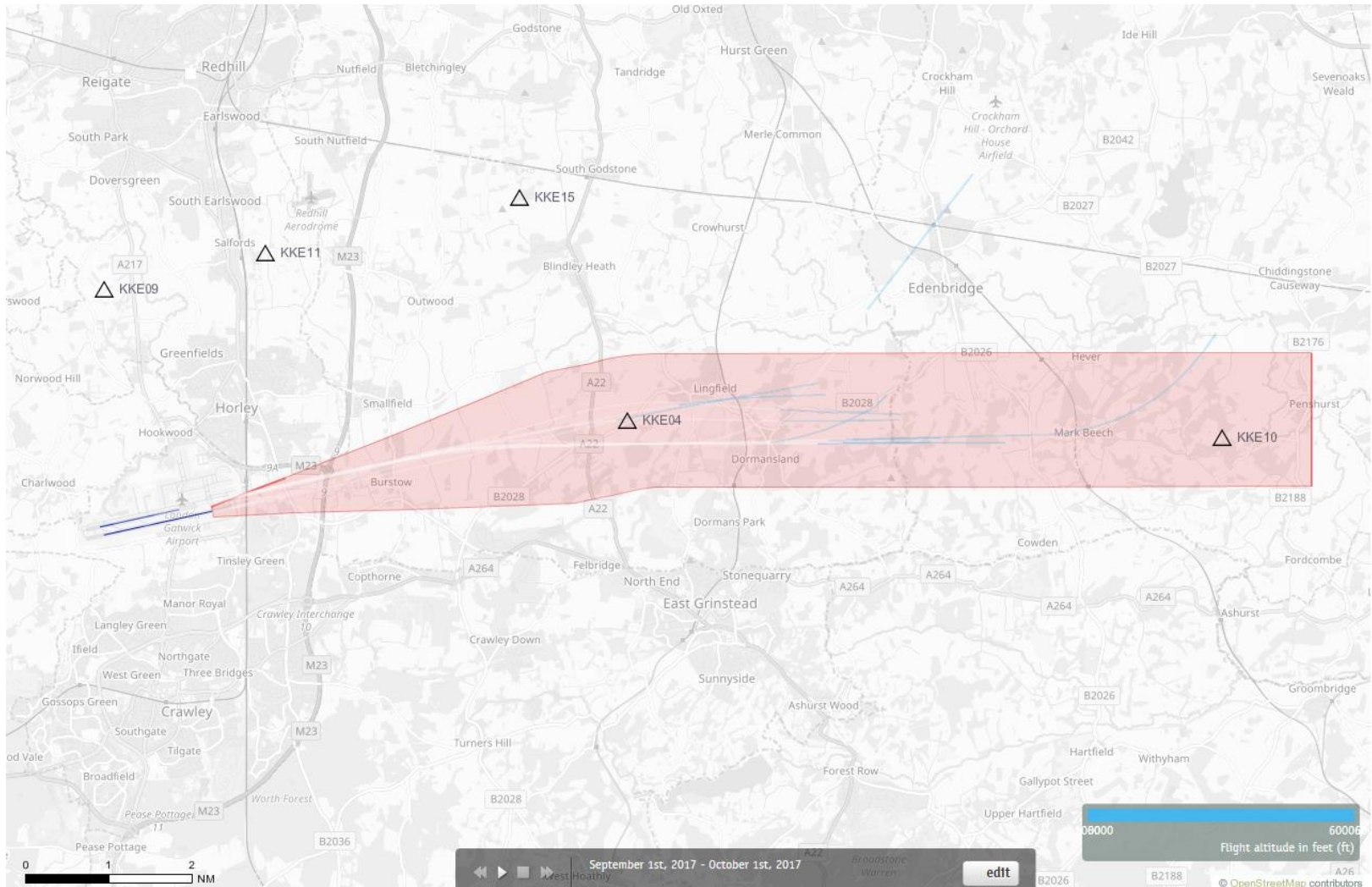
Route 5

Altitude Bands

5000-6000ft

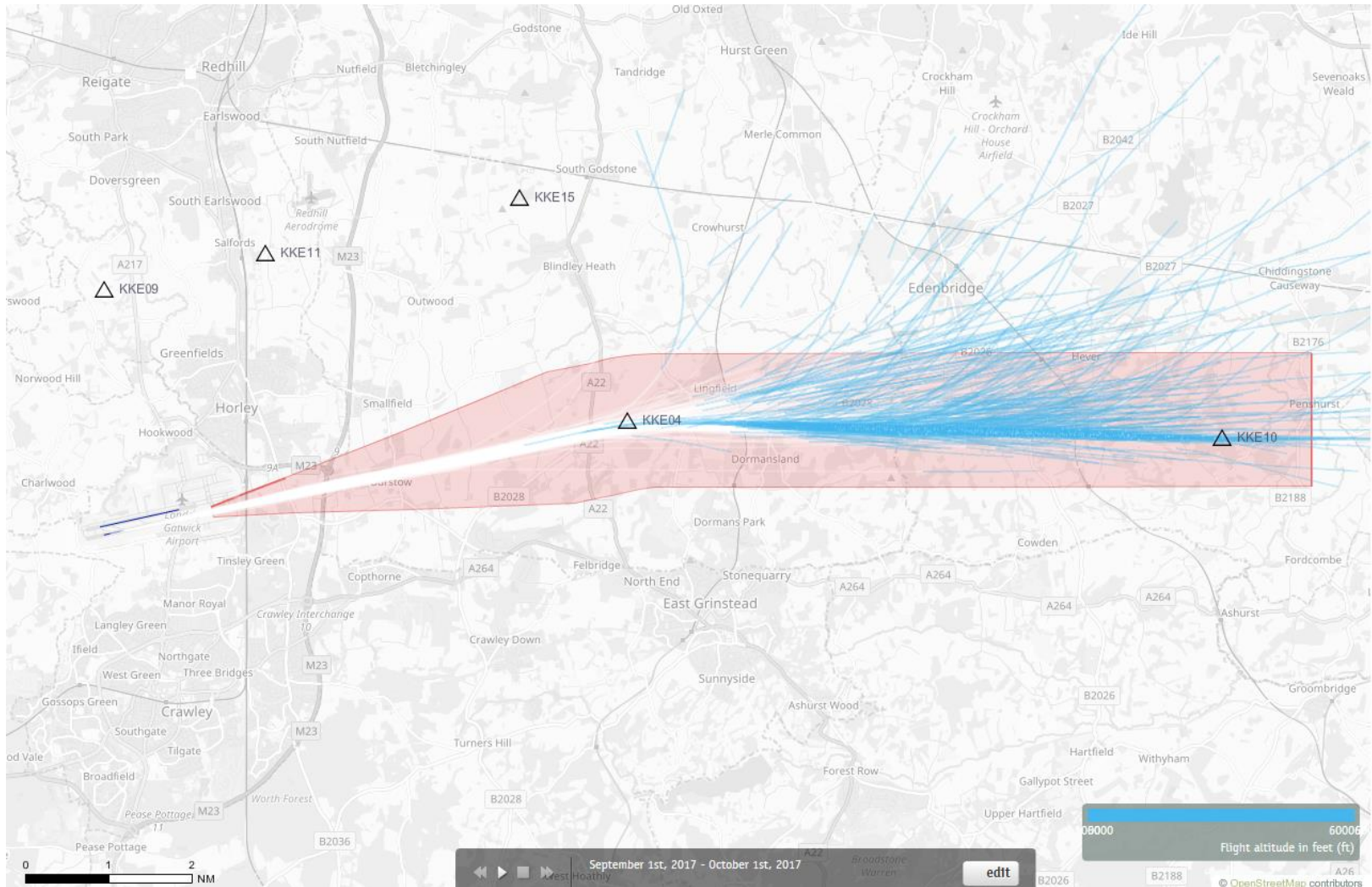
Post RNAV1 - Amendment

08CLN Departures 1st – 30th September 2017 5000-6000 feet (11 Aircraft – CONVENTIONAL ONLY)



Blue plots show the points at which an aircraft was between 5000 and 6000ft altitude.

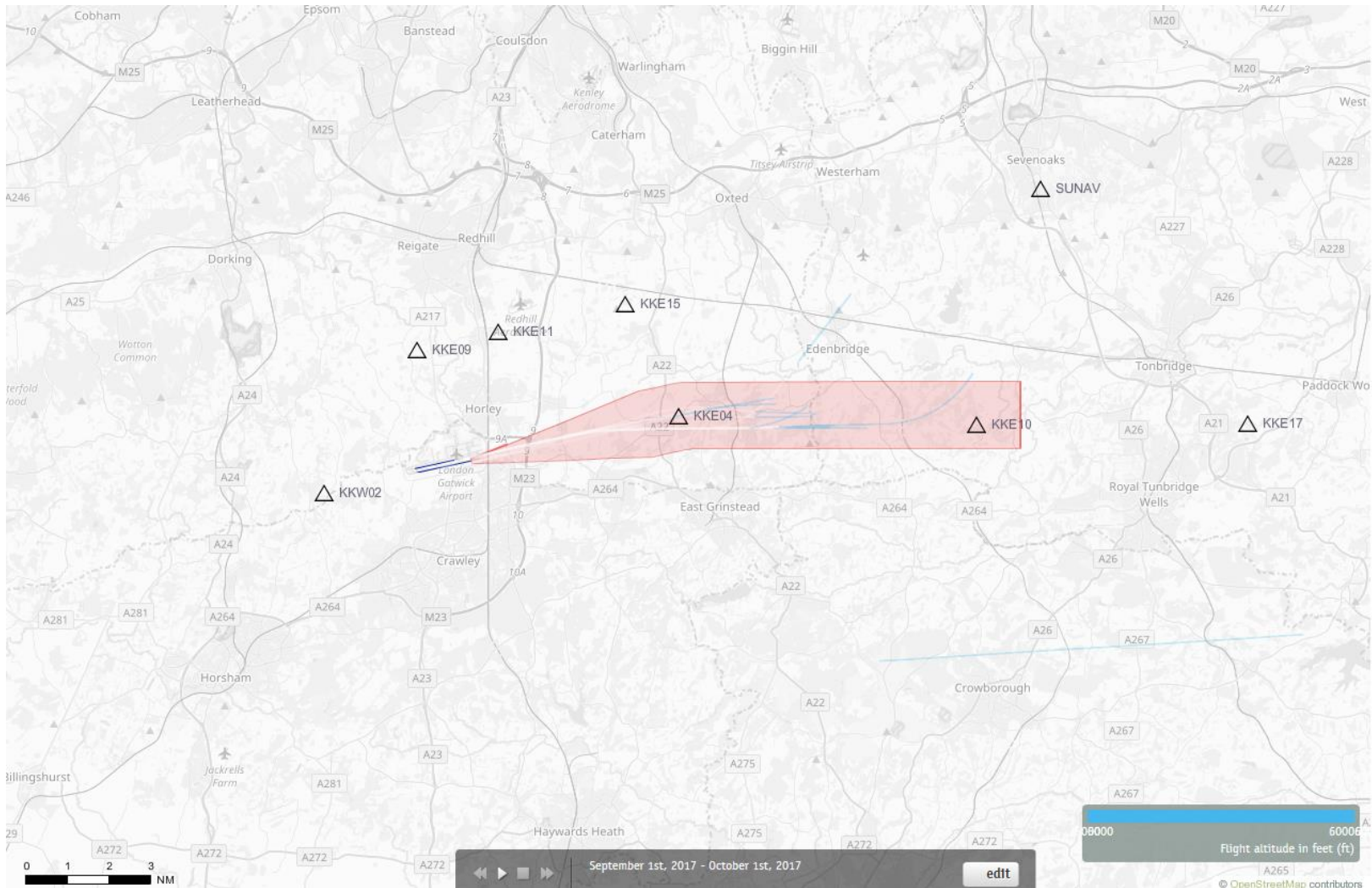
08CLN Departures 1st – 30th September 2017 5000-6000 feet (837 Aircraft – RNAV1 ONLY)



Blue plots show the points at which an aircraft was between 5000 and 6000ft altitude.

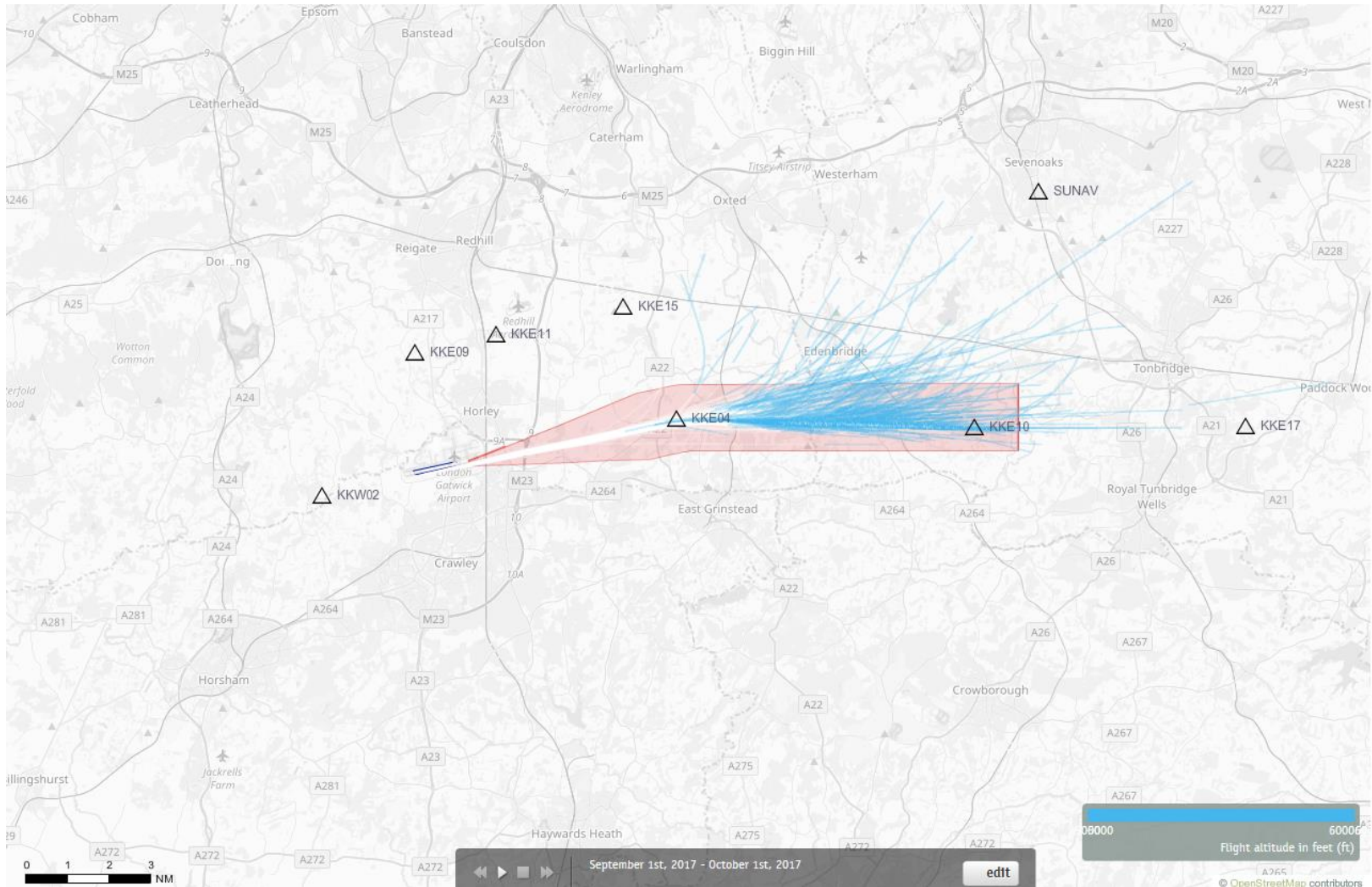
08CLN Departures 1st – 30th September 2017

5000-6000 feet (11 Aircraft – CONVENTIONAL ONLY)



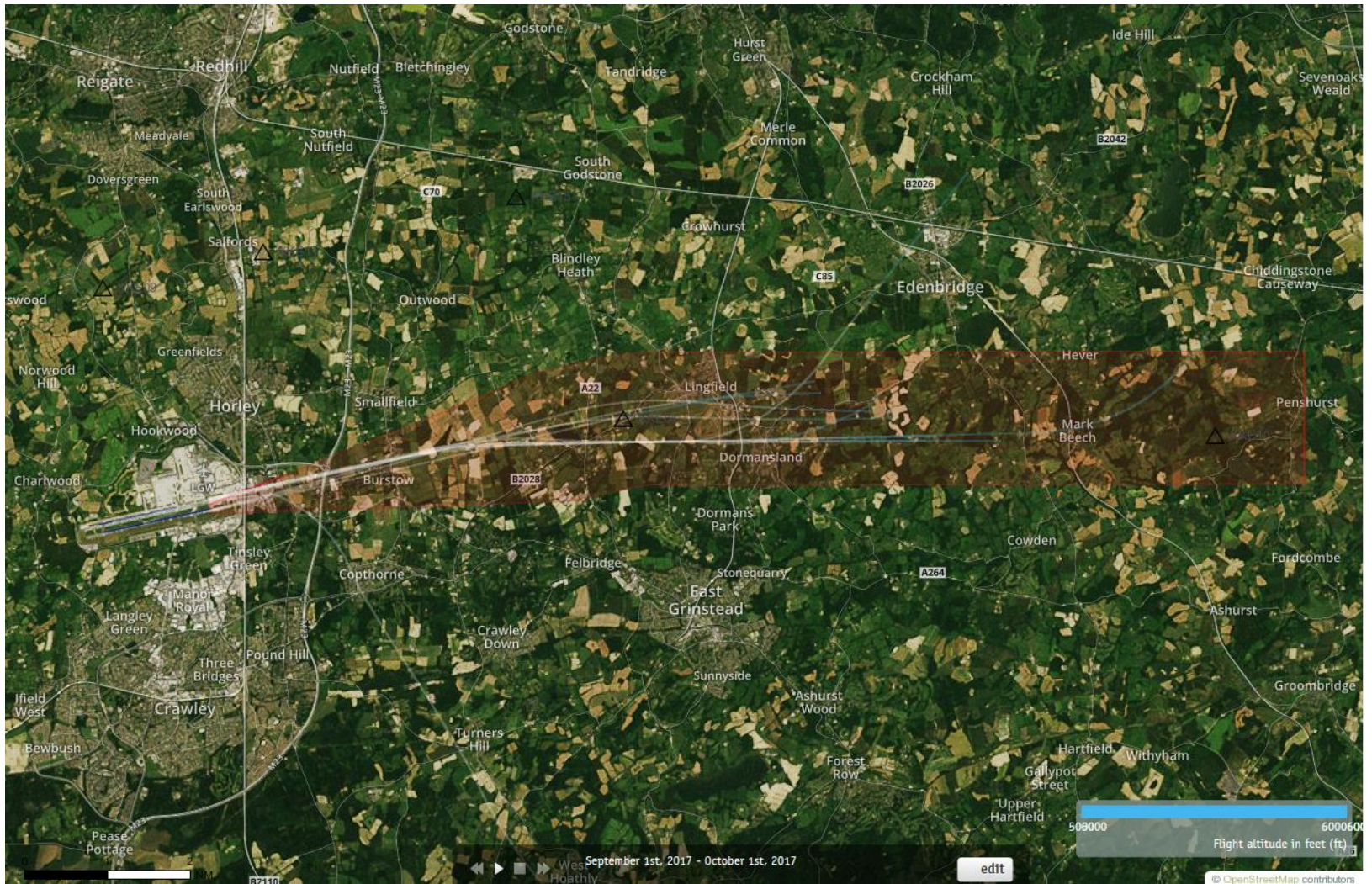
Blue plots show the points at which an aircraft was between 5000 and 6000ft altitude.

08CLN Departures 1st – 30th September 2017 5000-6000 feet (837 Aircraft – RNAV1 ONLY)



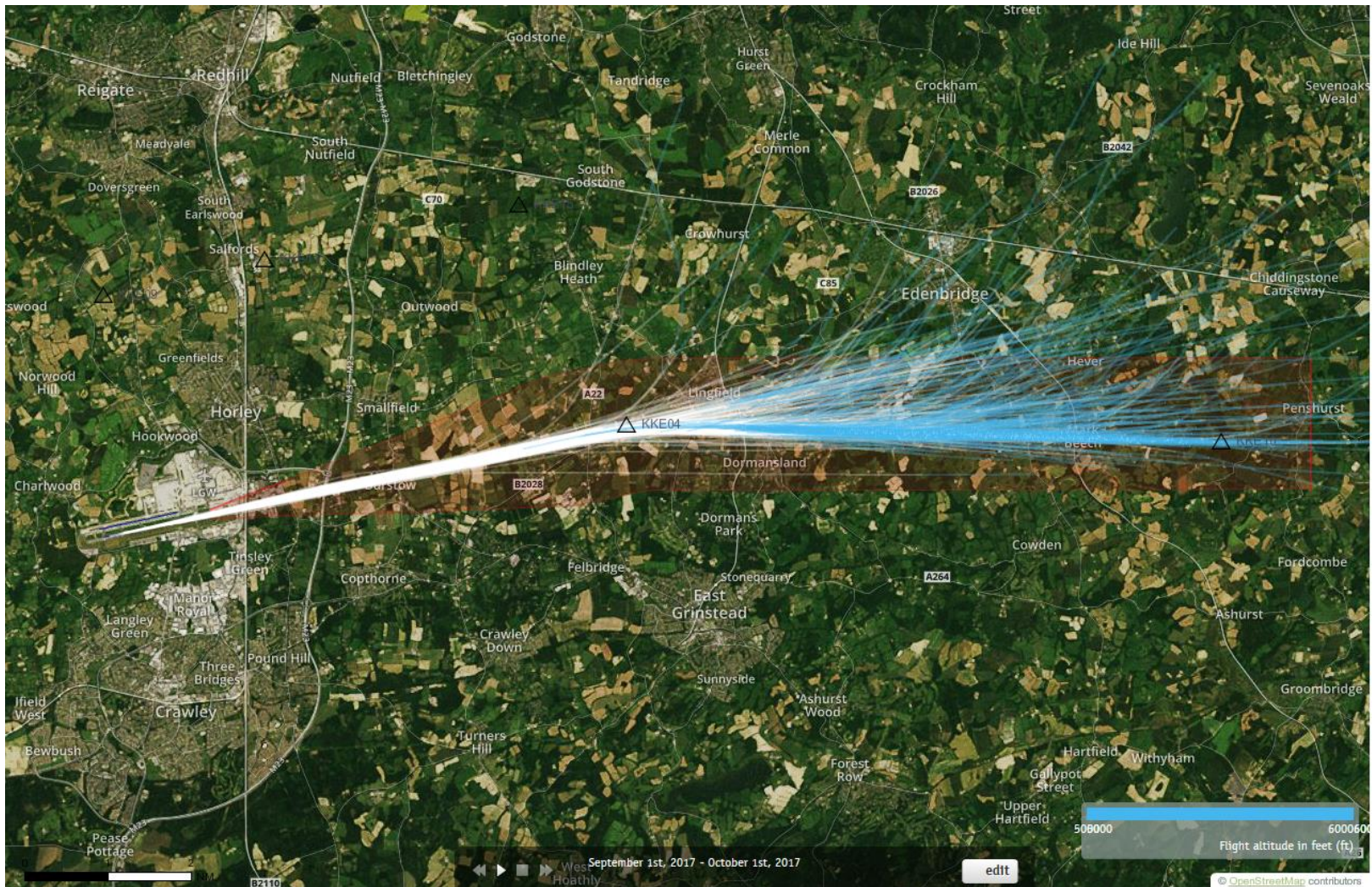
Blue plots show the points at which an aircraft was between 5000 and 6000ft altitude.

08CLN Departures 1st – 30th September 2017 5000-6000 feet (11 Aircraft – CONVENTIONAL ONLY)



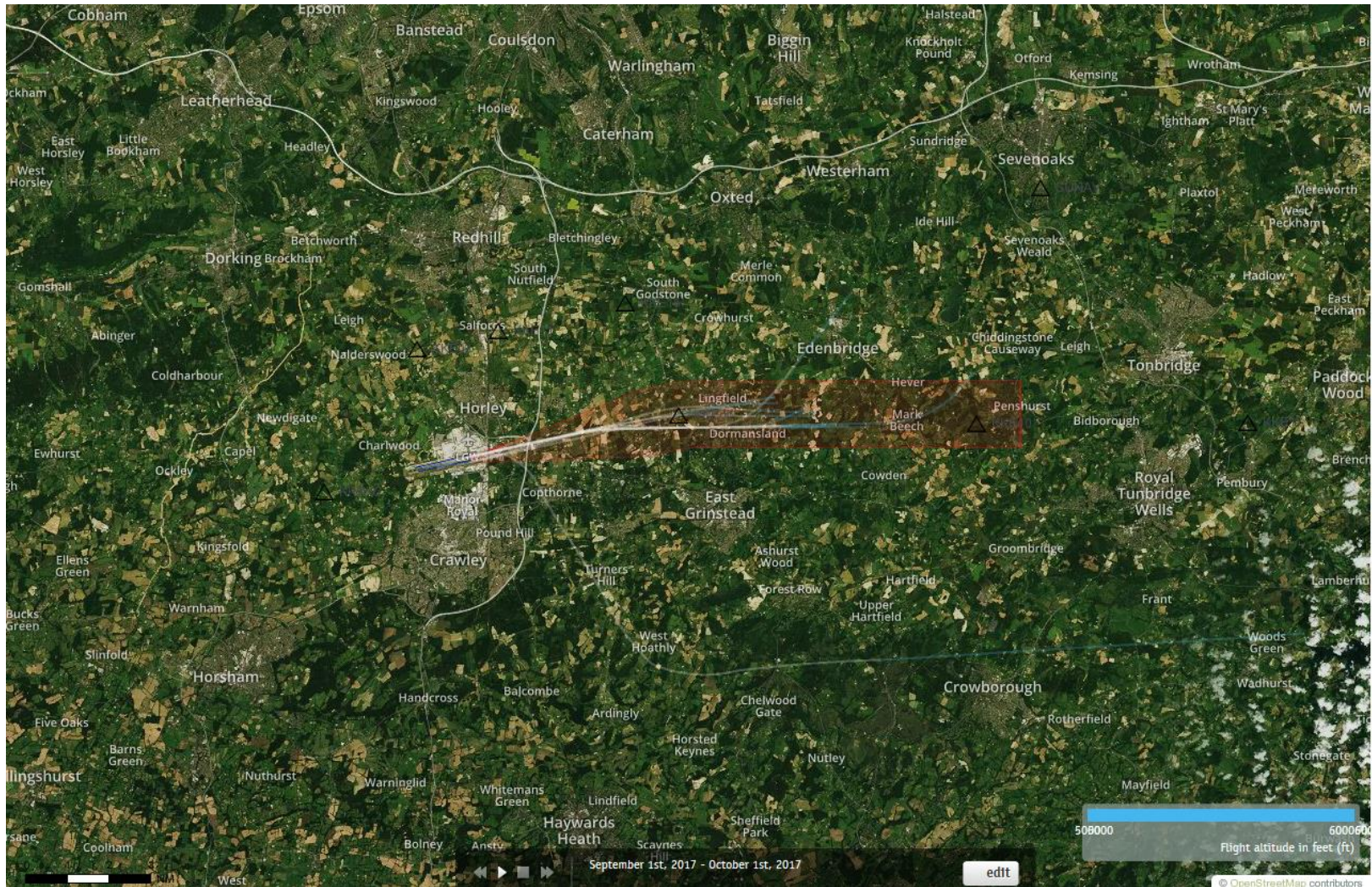
Blue plots show the points at which an aircraft was between 5000 and 6000ft altitude.

08CLN Departures 1st – 30th September 2017 5000-6000 feet (837 Aircraft – RNAV1 ONLY)



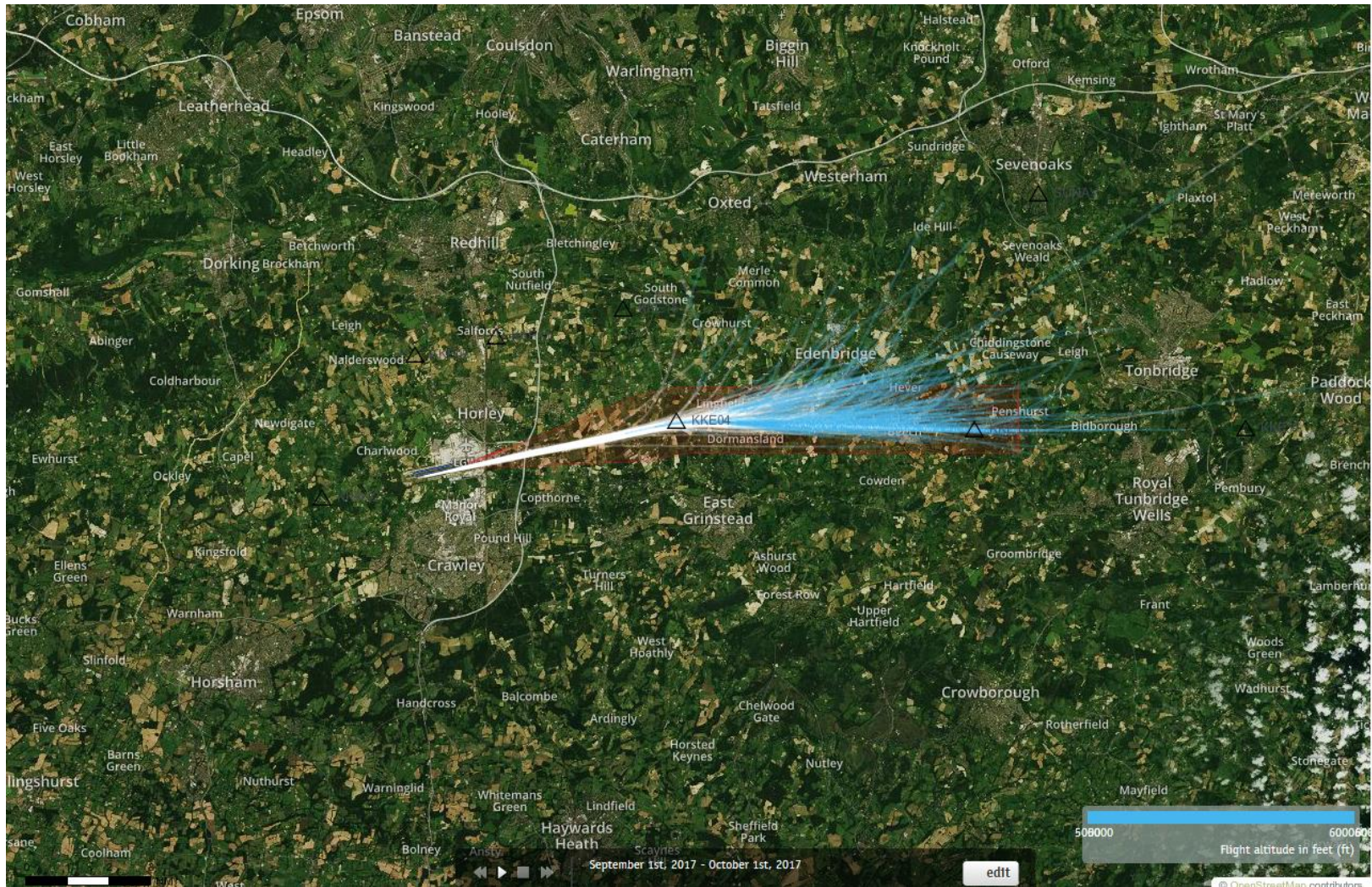
Blue plots show the points at which an aircraft was between 5000 and 6000ft altitude.

08CLN Departures 1st – 30th September 2017 5000-6000 feet (11 Aircraft – CONVENTIONAL ONLY)



Blue plots show the points at which an aircraft was between 5000 and 6000ft altitude.

08CLN Departures 1st – 30th September 2017 5000-6000 feet (837 Aircraft – RNAV1 ONLY)



Blue plots show the points at which an aircraft was between 5000 and 6000ft altitude.