

08CLACTON

Route 5

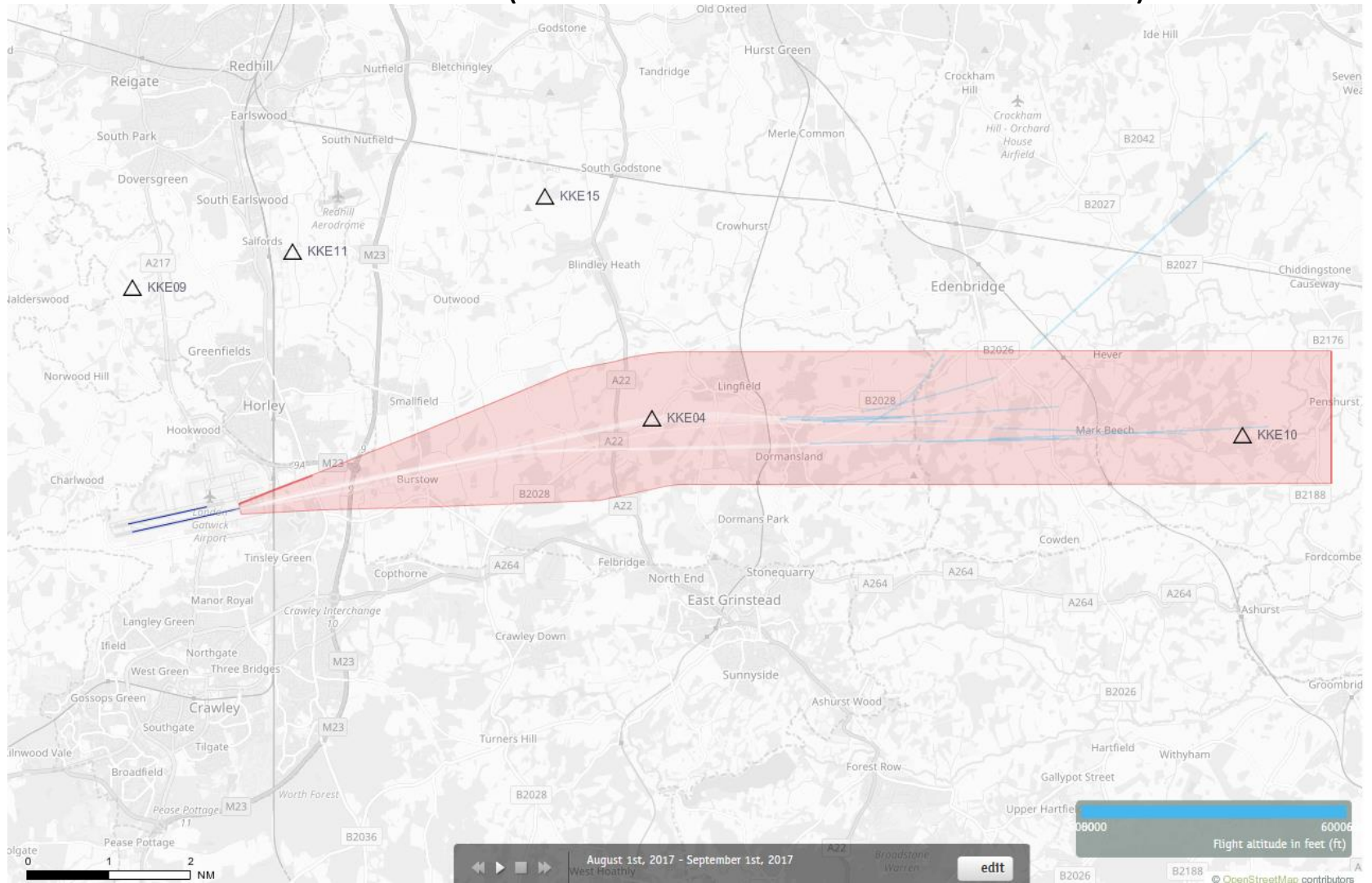
Altitude Bands

5000-6000ft

Post RNAV1 - Amendment

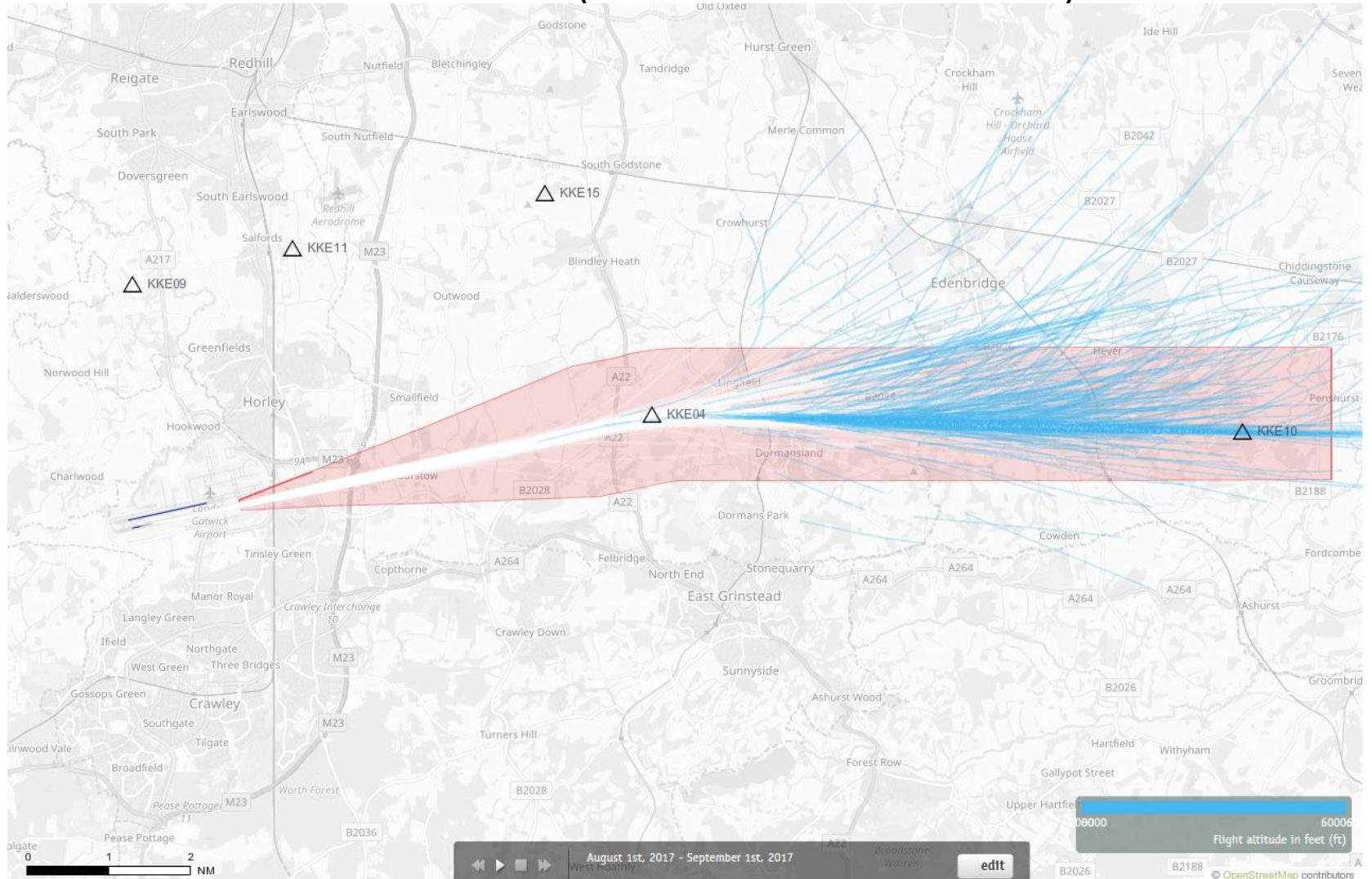
08CLN Departures 1st – 31st August 2017

5000-6000 feet (11 Aircraft – CONVENTIONAL ONLY)



Blue plots show the points at which an aircraft was between 5000 and 6000ft altitude.

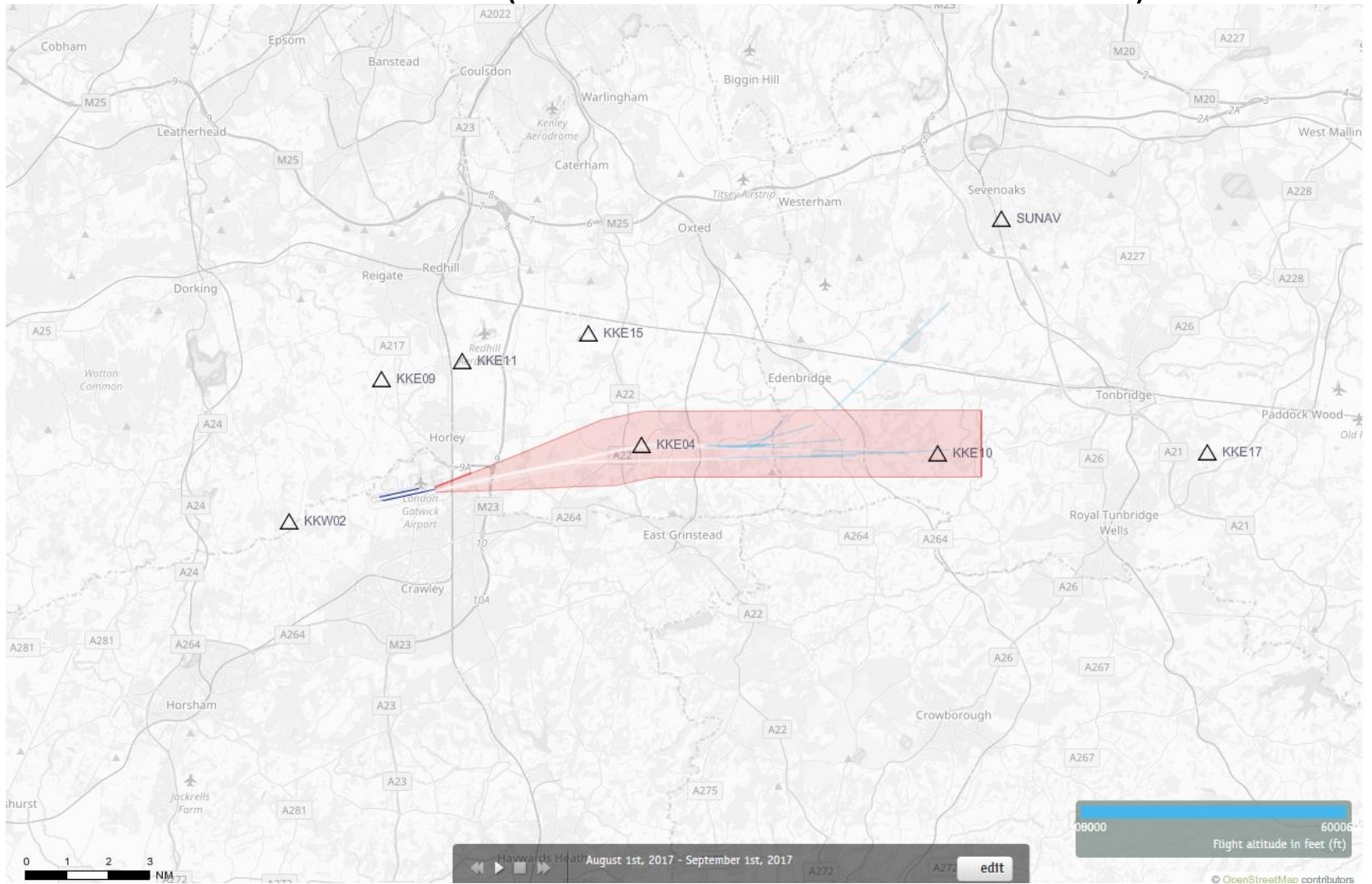
08CLN Departures 1st – 31st August 2017 5000-6000 feet (854 Aircraft – RNAV1 ONLY)



Blue plots show the points at which an aircraft was between 5000 and 6000ft altitude.

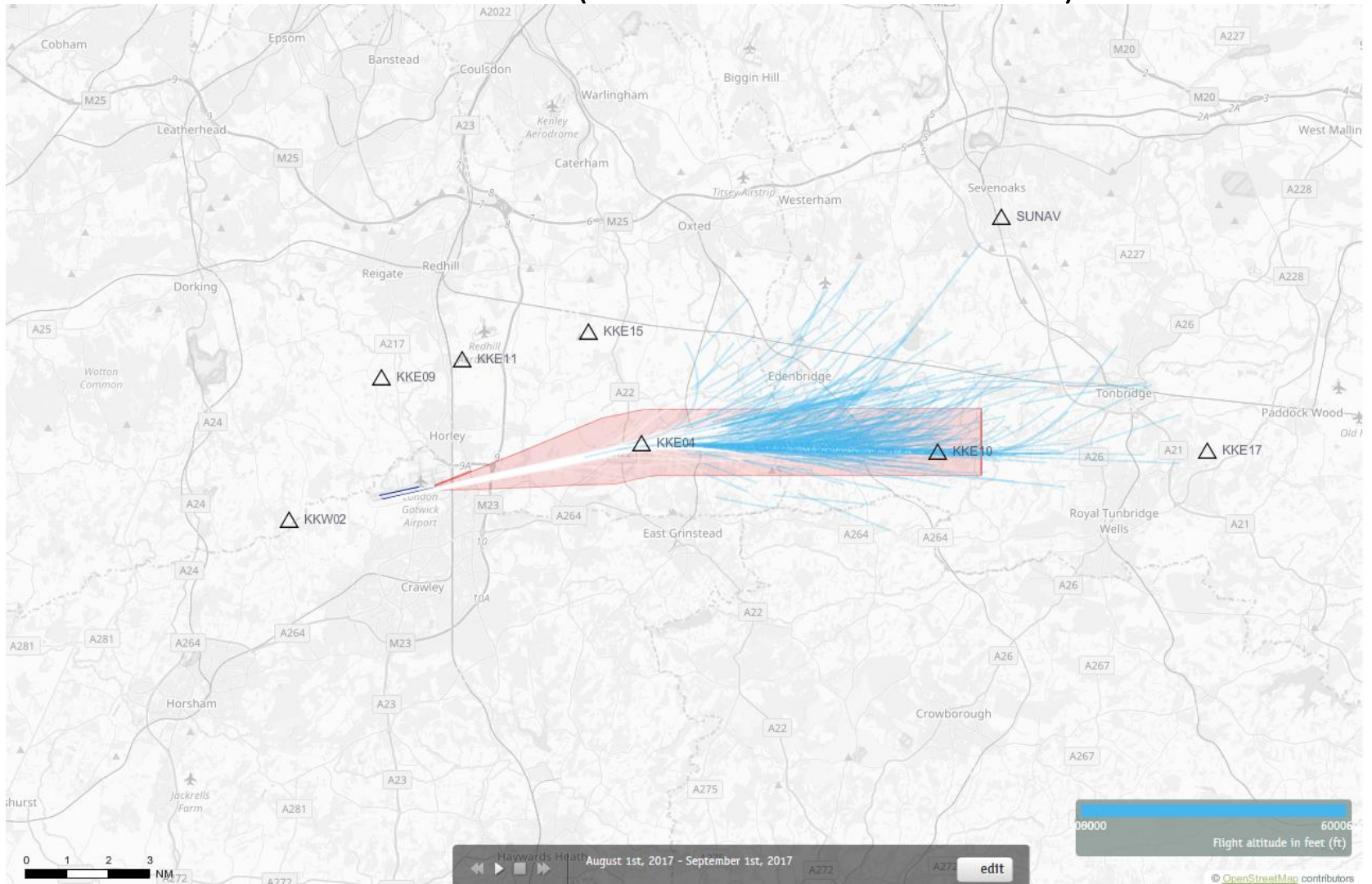
08CLN Departures 1st – 31st August 2017

5000-6000 feet (11 Aircraft – CONVENTIONAL ONLY)



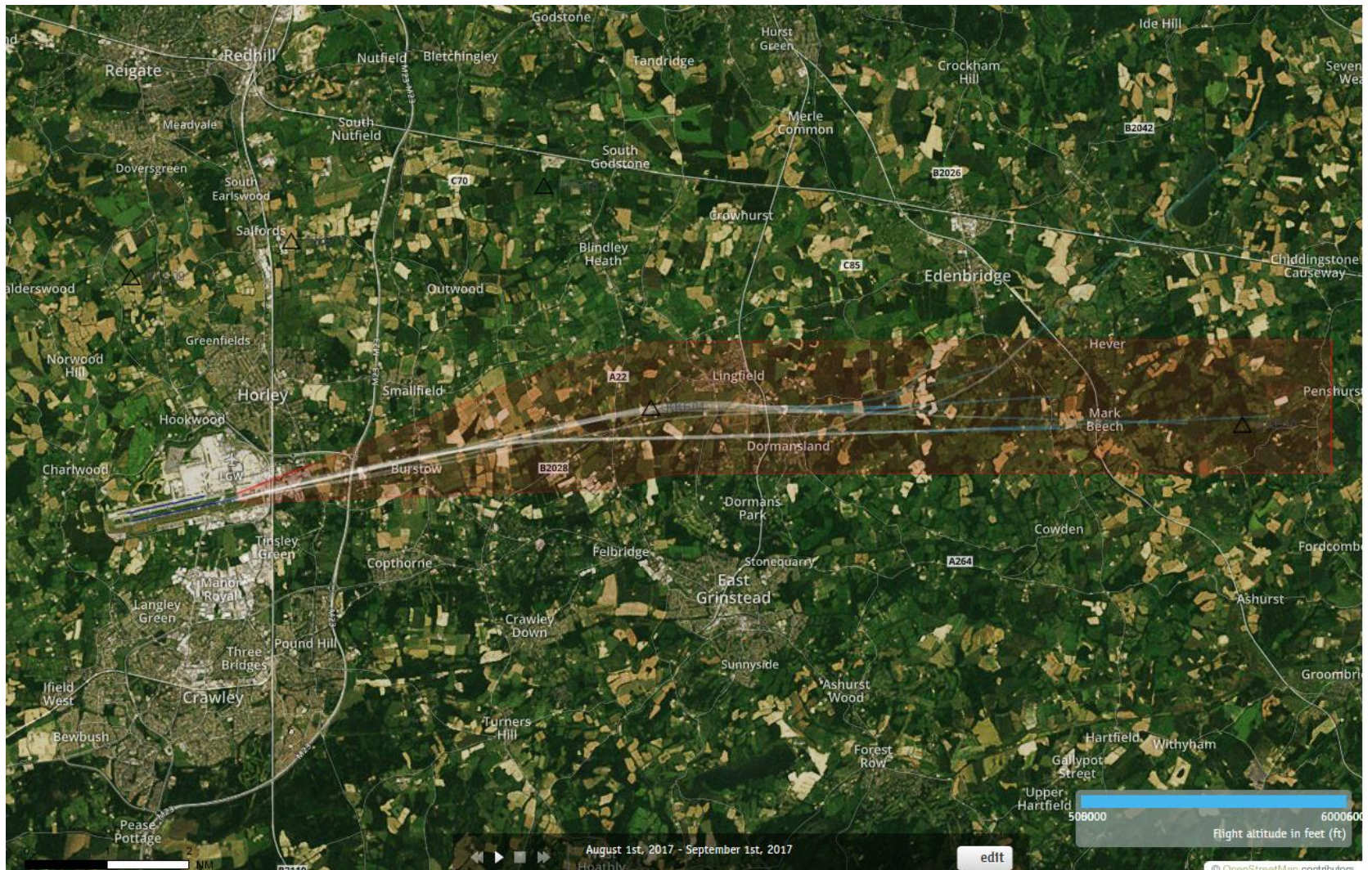
Blue plots show the points at which an aircraft was between 5000 and 6000ft altitude.

08CLN Departures 1st – 31st August 2017 5000-6000 feet (854 Aircraft – RNAV1 ONLY)



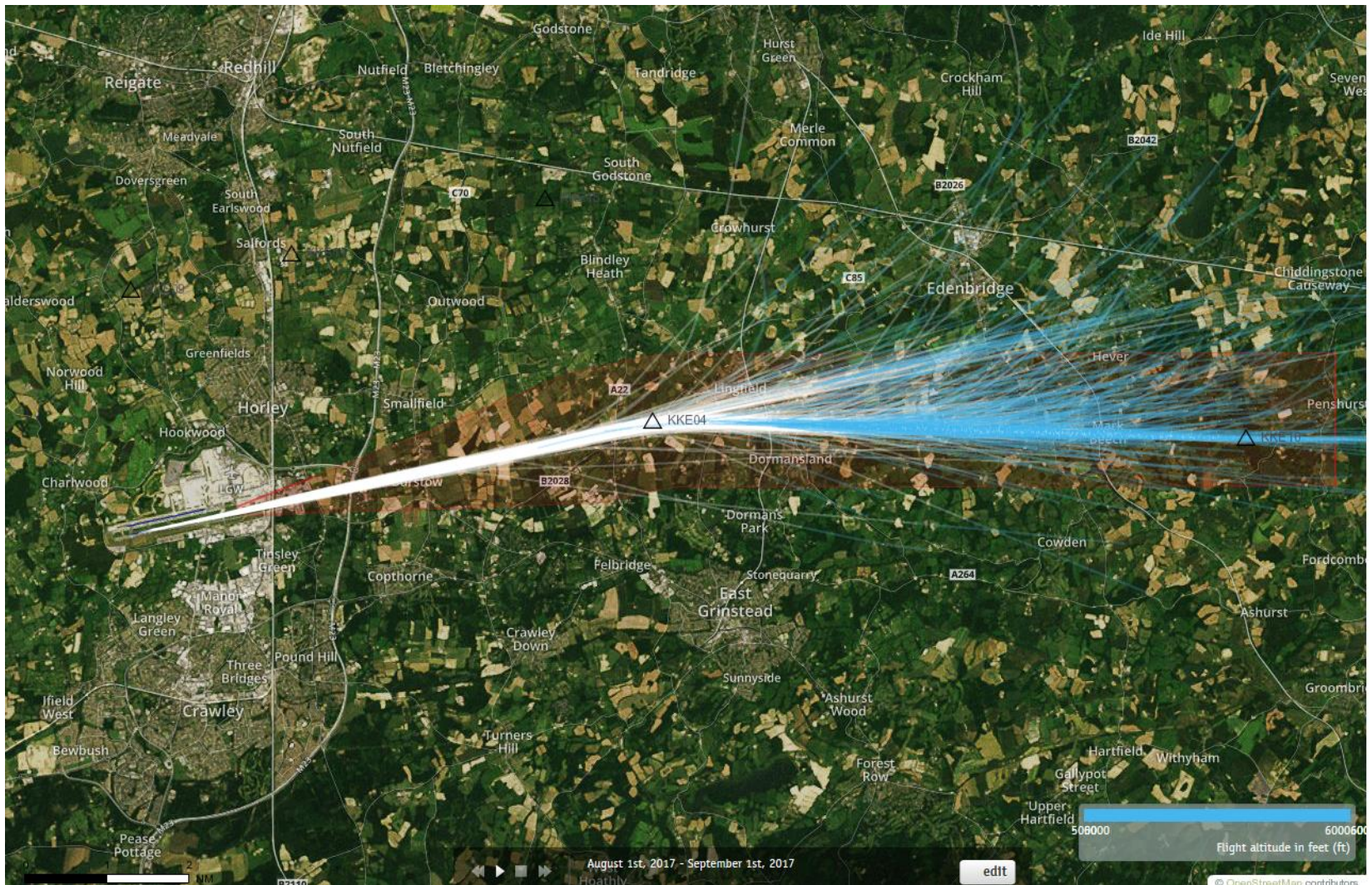
Blue plots show the points at which an aircraft was between 5000 and 6000ft altitude.

08CLN Departures 1st – 31st August 2017 5000-6000 feet (11 Aircraft – CONVENTIONAL ONLY)



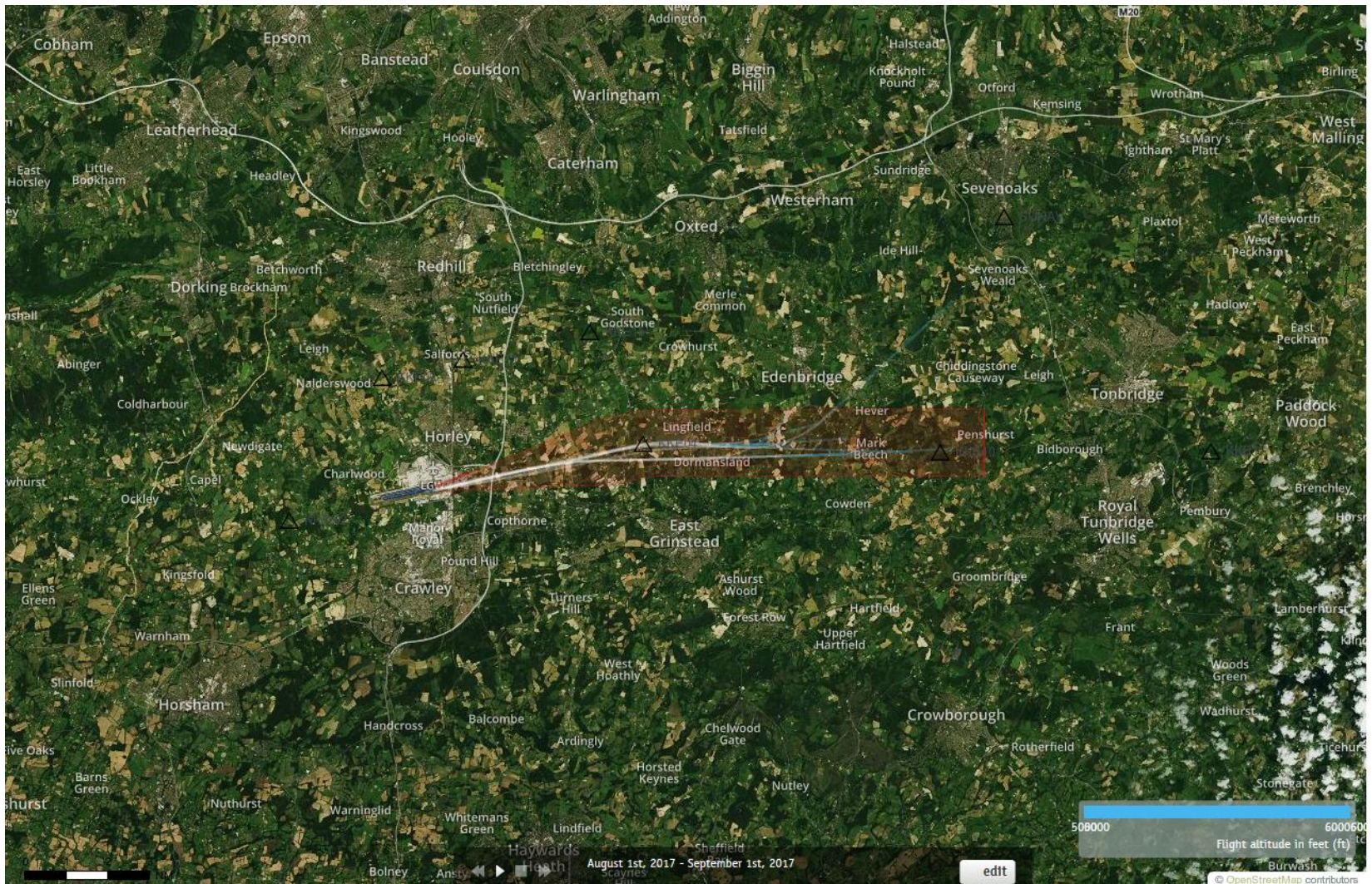
Blue plots show the points at which an aircraft was between 5000 and 6000ft altitude.

08CLN Departures 1st – 31st August 2017 5000-6000 feet (854 Aircraft – RNAV1 ONLY)



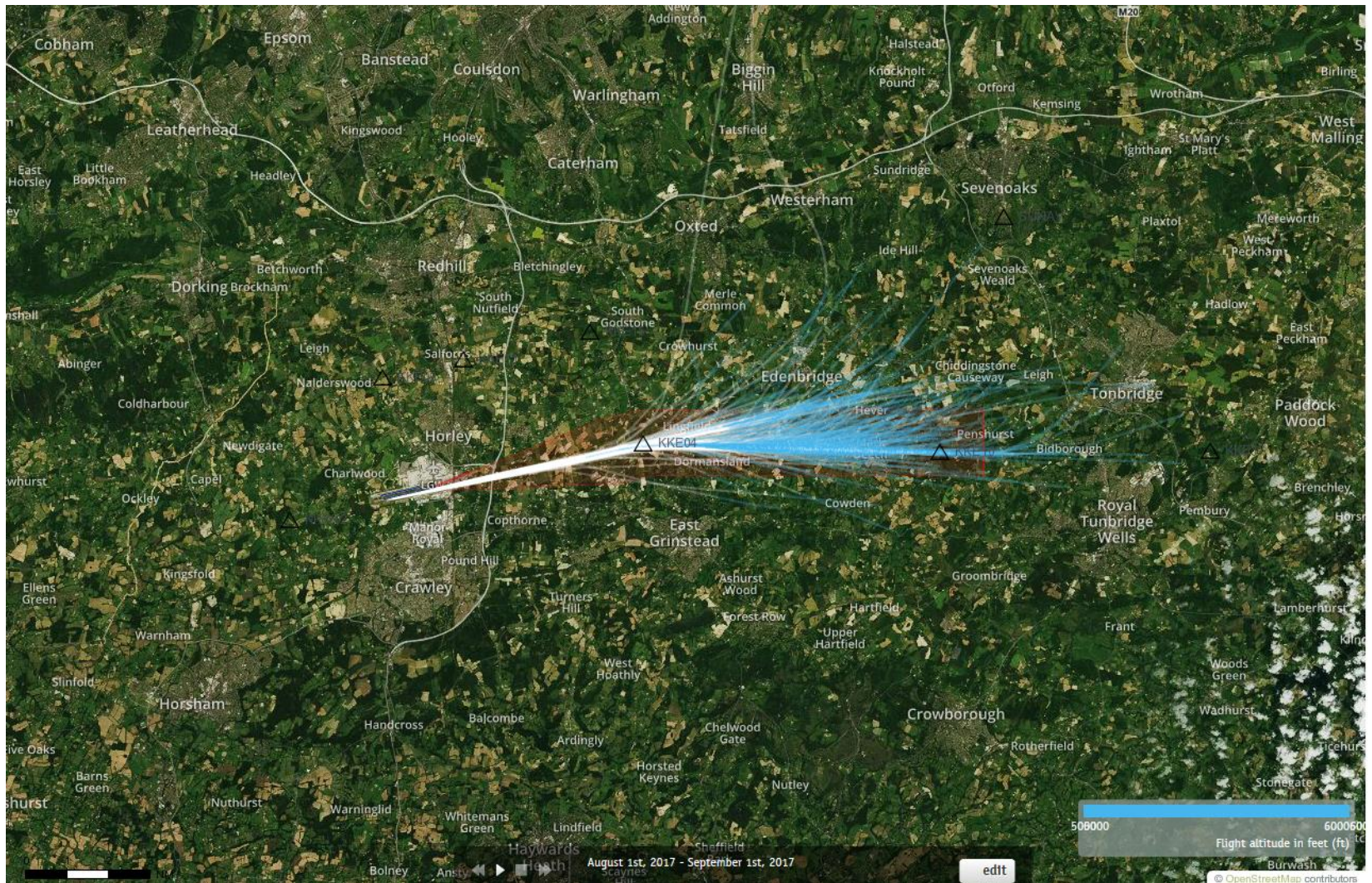
Blue plots show the points at which an aircraft was between 5000 and 6000ft altitude.

08CLN Departures 1st – 31st August 2017 5000-6000 feet (11 Aircraft – CONVENTIONAL ONLY)



Blue plots show the points at which an aircraft was between 5000 and 6000ft altitude.

08CLN Departures 1st – 31st August 2017 5000-6000 feet (854 Aircraft – RNAV1 ONLY)



Blue plots show the points at which an aircraft was between 5000 and 6000ft altitude.