

08CLACTON

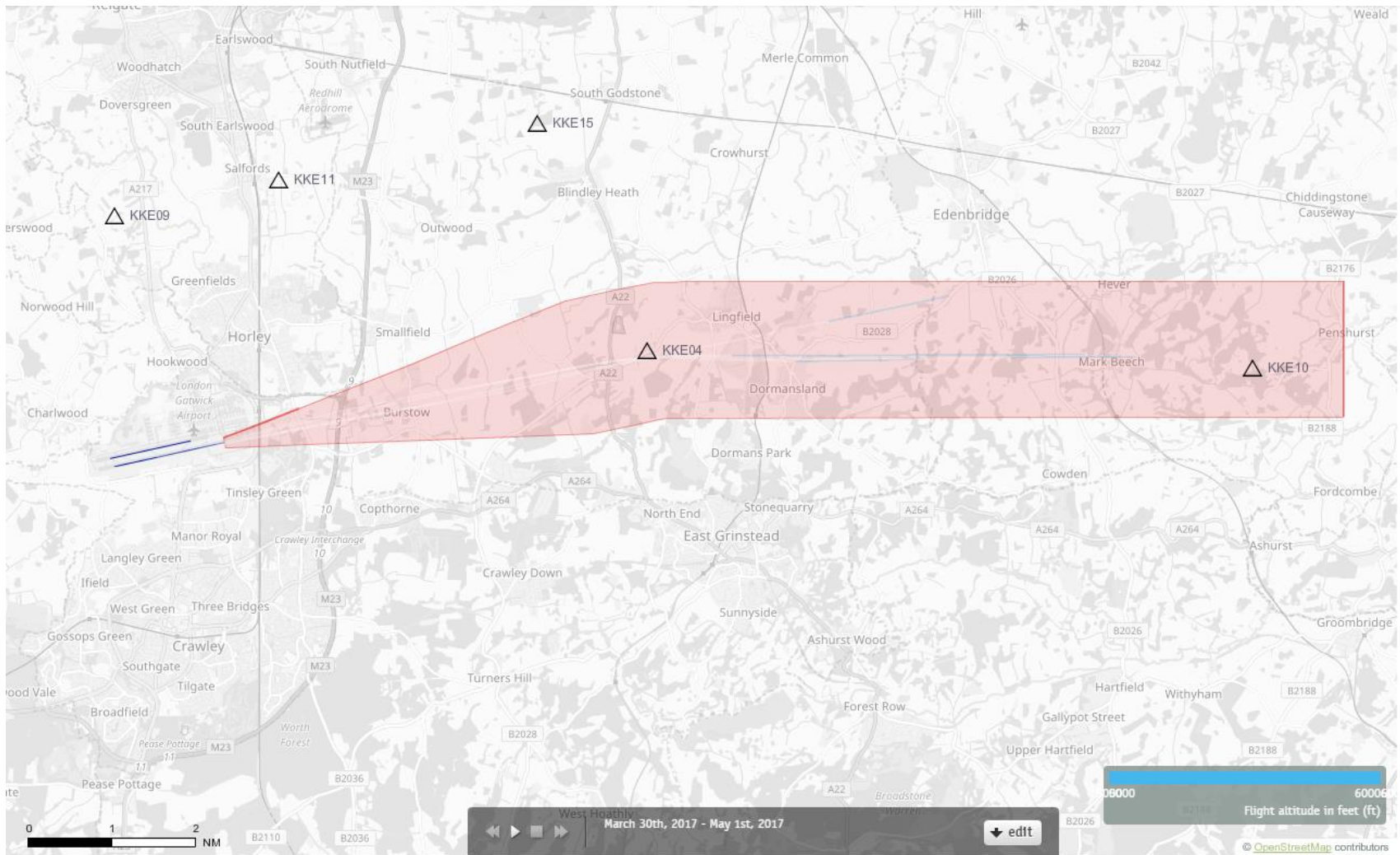
Route 5

Altitude Bands

5000-6000ft

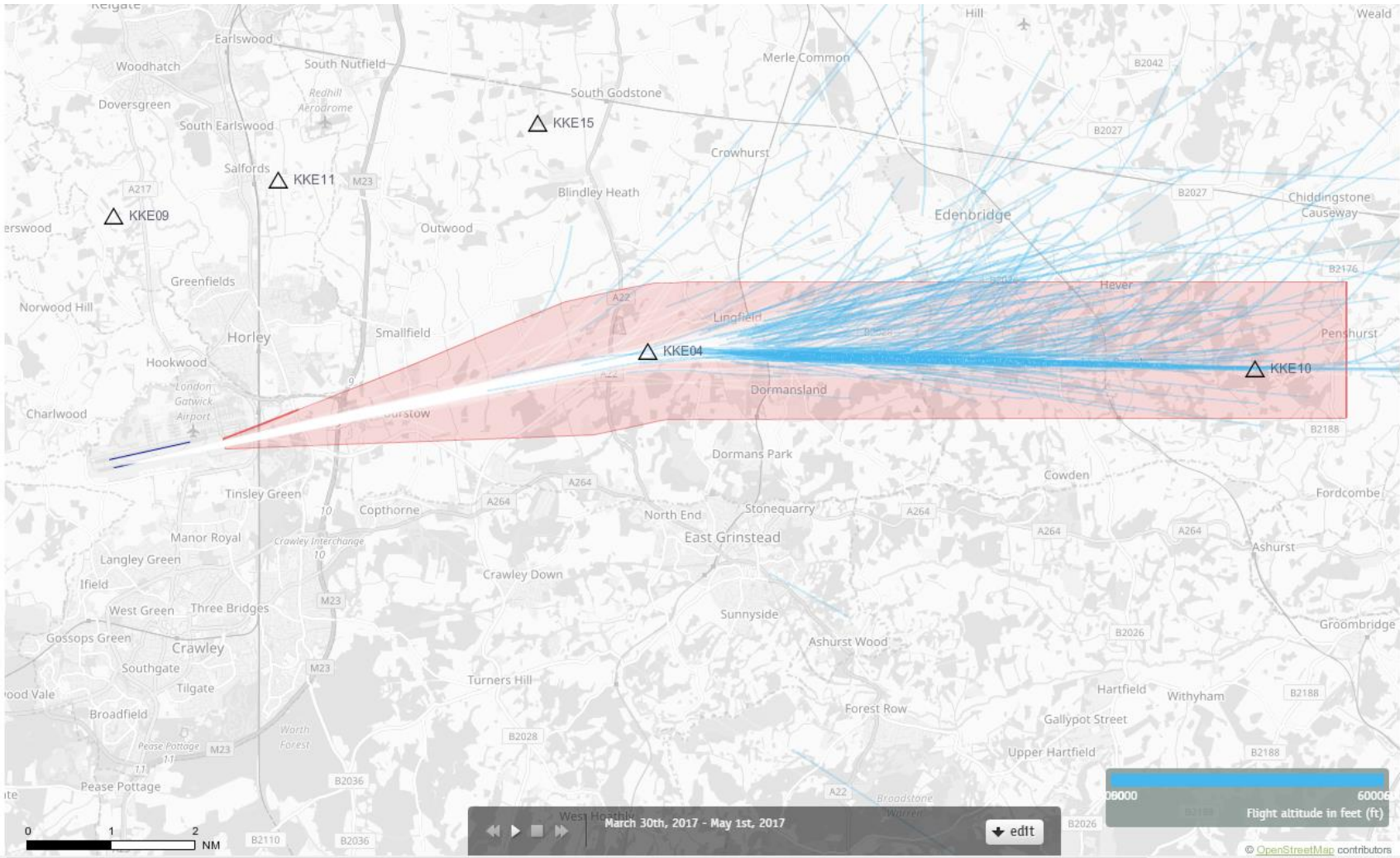
Post RNAV1 - Amendment

08CLN Departures 30th March – 30th April 2017 5000-6000 feet (4 Aircraft – CONVENTIONAL ONLY)



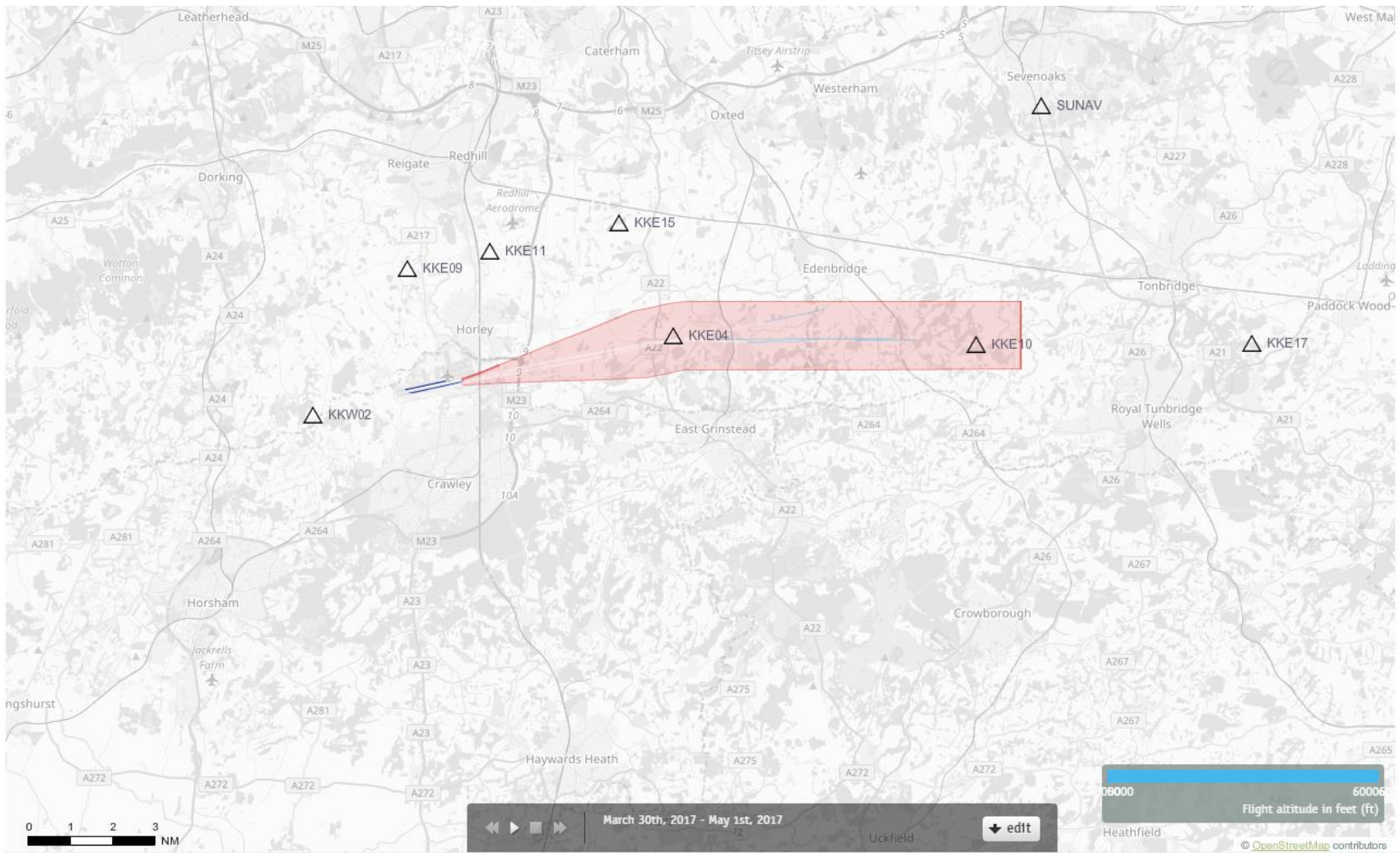
Blue plots show the points at which an aircraft was between 5000 and 6000ft altitude.

08CLN Departures 30th March – 30th April 2017 5000-6000 feet (632 Aircraft – RNAV1 ONLY)



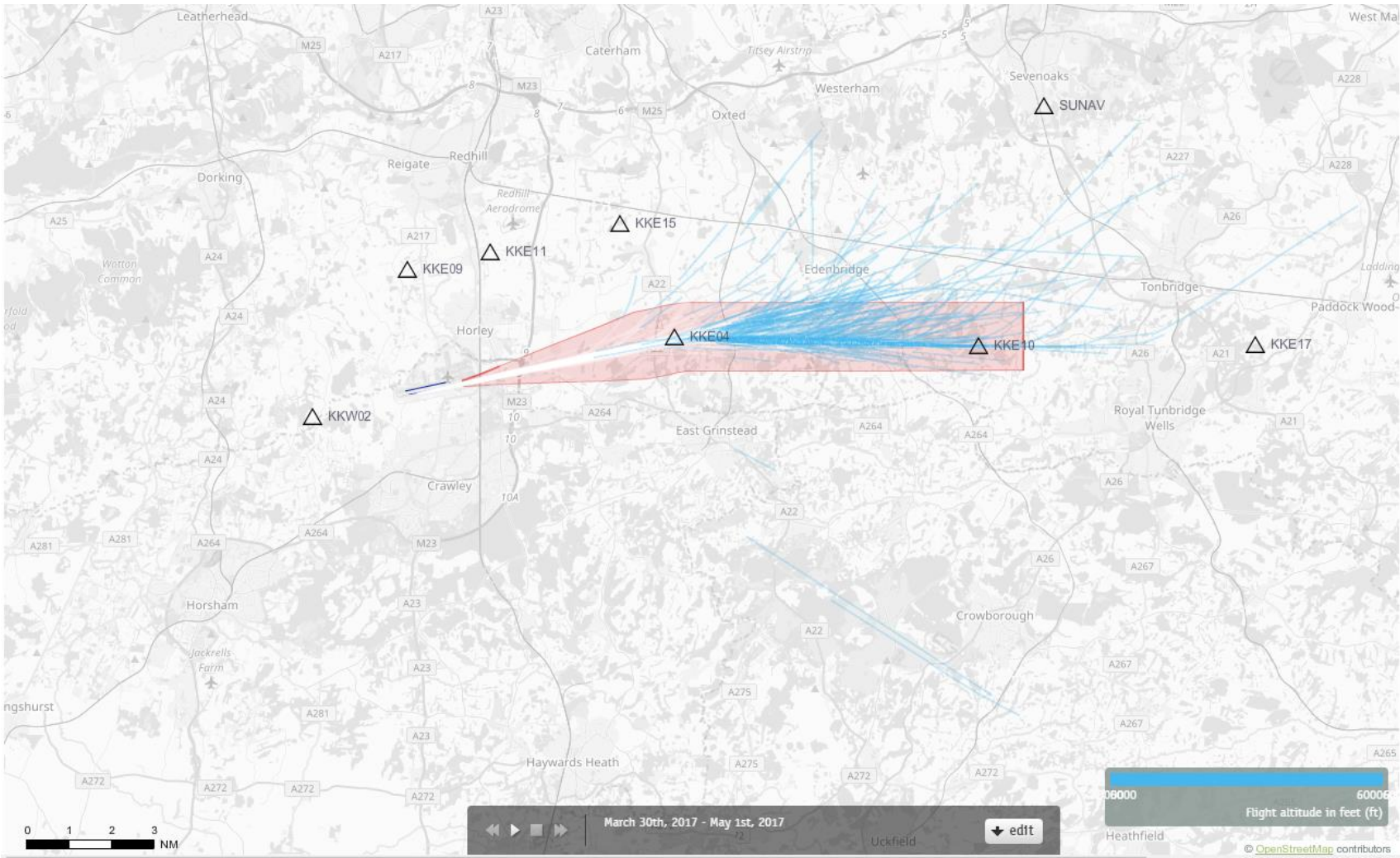
Blue plots show the points at which an aircraft was between 5000 and 6000ft altitude.

08CLN Departures 30th March – 30th April 2017 5000-6000 feet (4 Aircraft – CONVENTIONAL ONLY)



Blue plots show the points at which an aircraft was between 5000 and 6000ft altitude.

08CLN Departures 30th March – 30th April 2017 5000-6000 feet (632 Aircraft – RNAV1 ONLY)



Blue plots show the points at which an aircraft was between 5000 and 6000ft altitude.

08CLN Departures 30th March – 30th April 2017

5000-6000 feet (4 Aircraft – CONVENTIONAL ONLY)



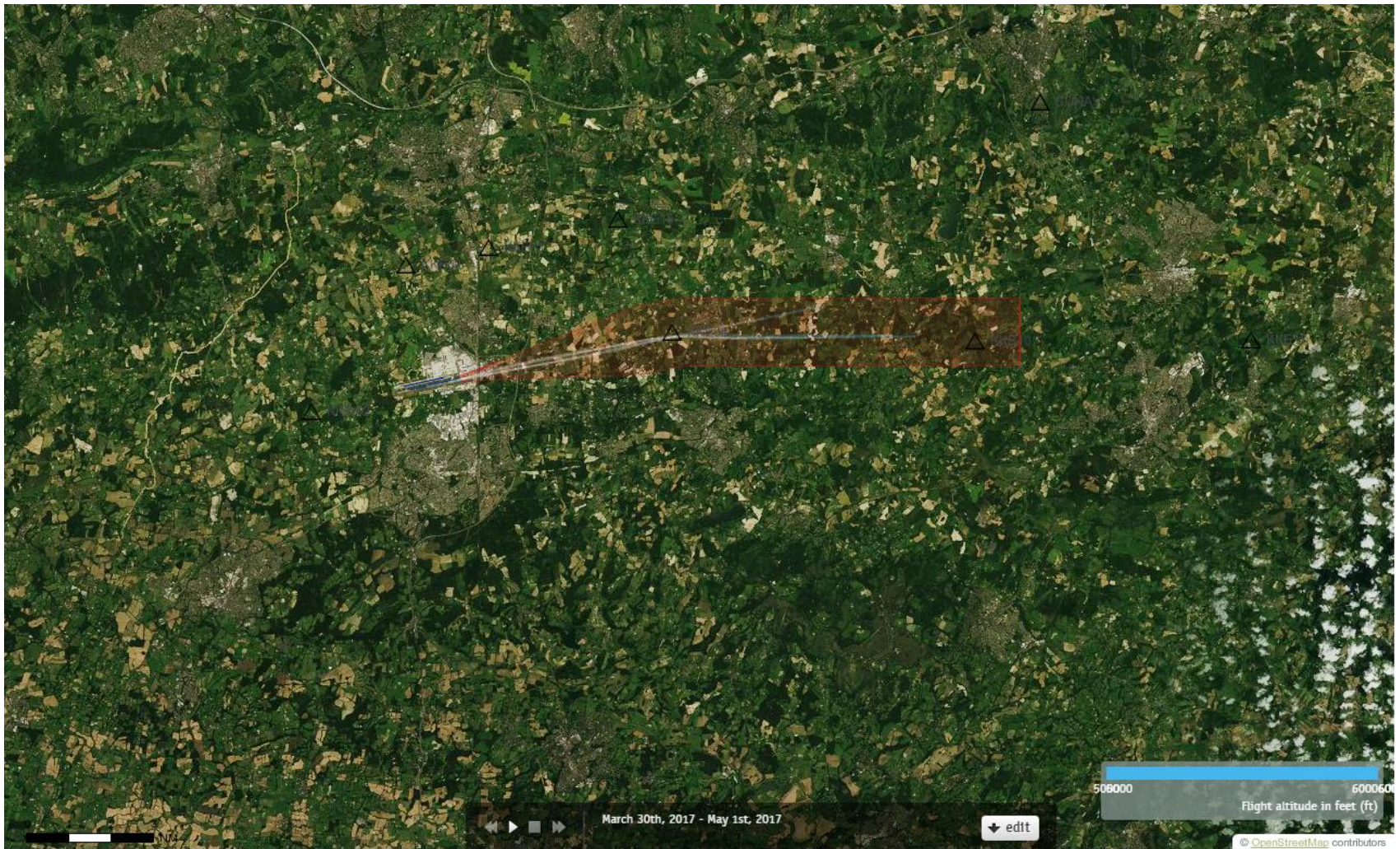
Blue plots show the points at which an aircraft was between 5000 and 6000ft altitude.

08CLN Departures 30th March – 30th April 2017 5000-6000 feet (632 Aircraft – RNAV1 ONLY)



Blue plots show the points at which an aircraft was between 5000 and 6000ft altitude.

08CLN Departures 30th March – 30th April 2017 5000-6000 feet (4 Aircraft – CONVENTIONAL ONLY)



Blue plots show the points at which an aircraft was between 5000 and 6000ft altitude.

08CLN Departures 30th March – 30th April 2017 5000-6000 feet (632 Aircraft – RNAV1 ONLY)



Blue plots show the points at which an aircraft was between 5000 and 6000ft altitude.