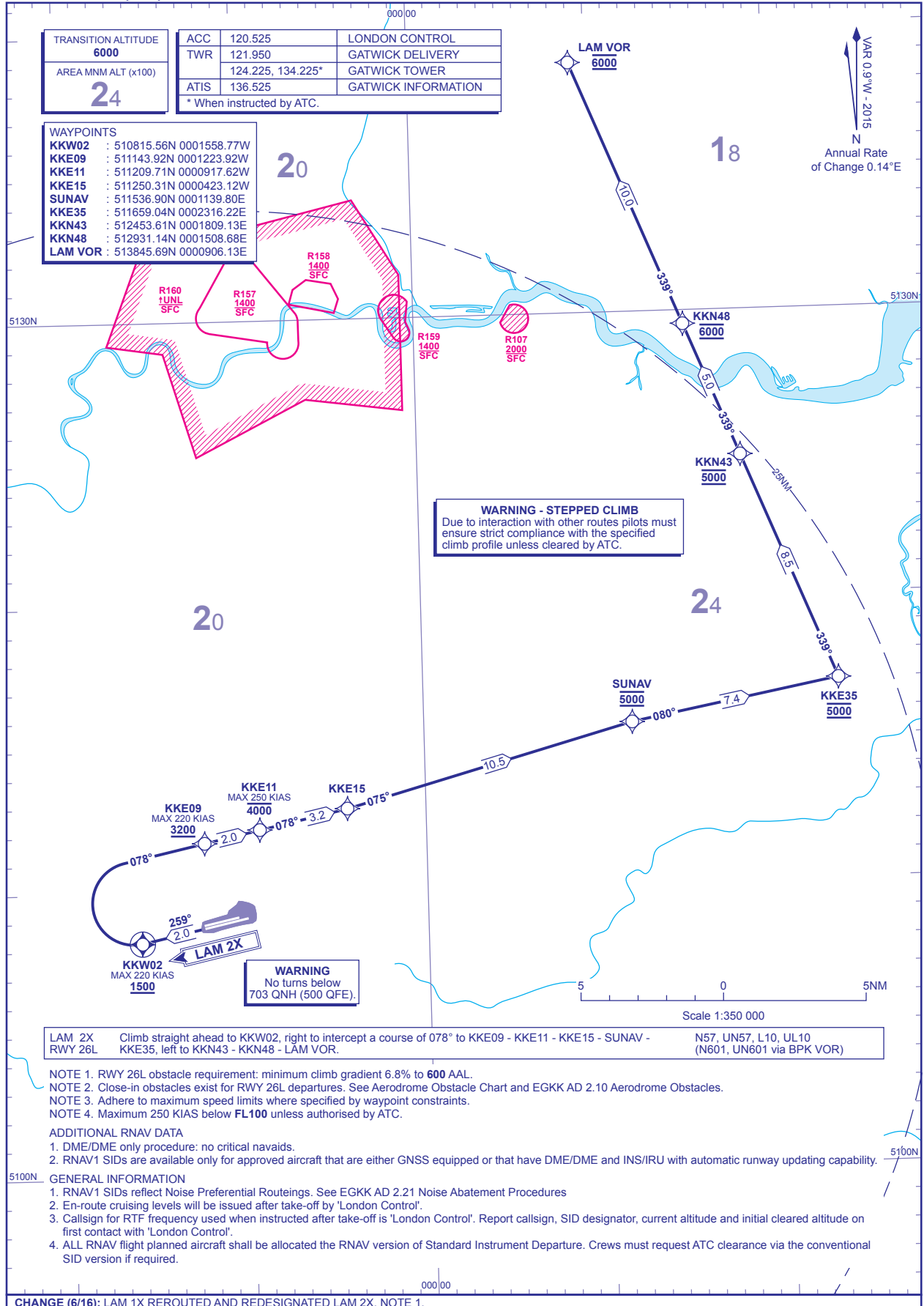


**RNAV1 (DME/DME or GNSS)  
STANDARD DEPARTURE CHART -  
INSTRUMENT (SID) - ICAO**

DISTANCES IN NAUTICAL MILES  
TRACKS ARE MAGNETIC  
ALTITUDES AND ELEVATIONS ARE IN FEET

**LONDON GATWICK  
RWY 26L  
LAM 2X**

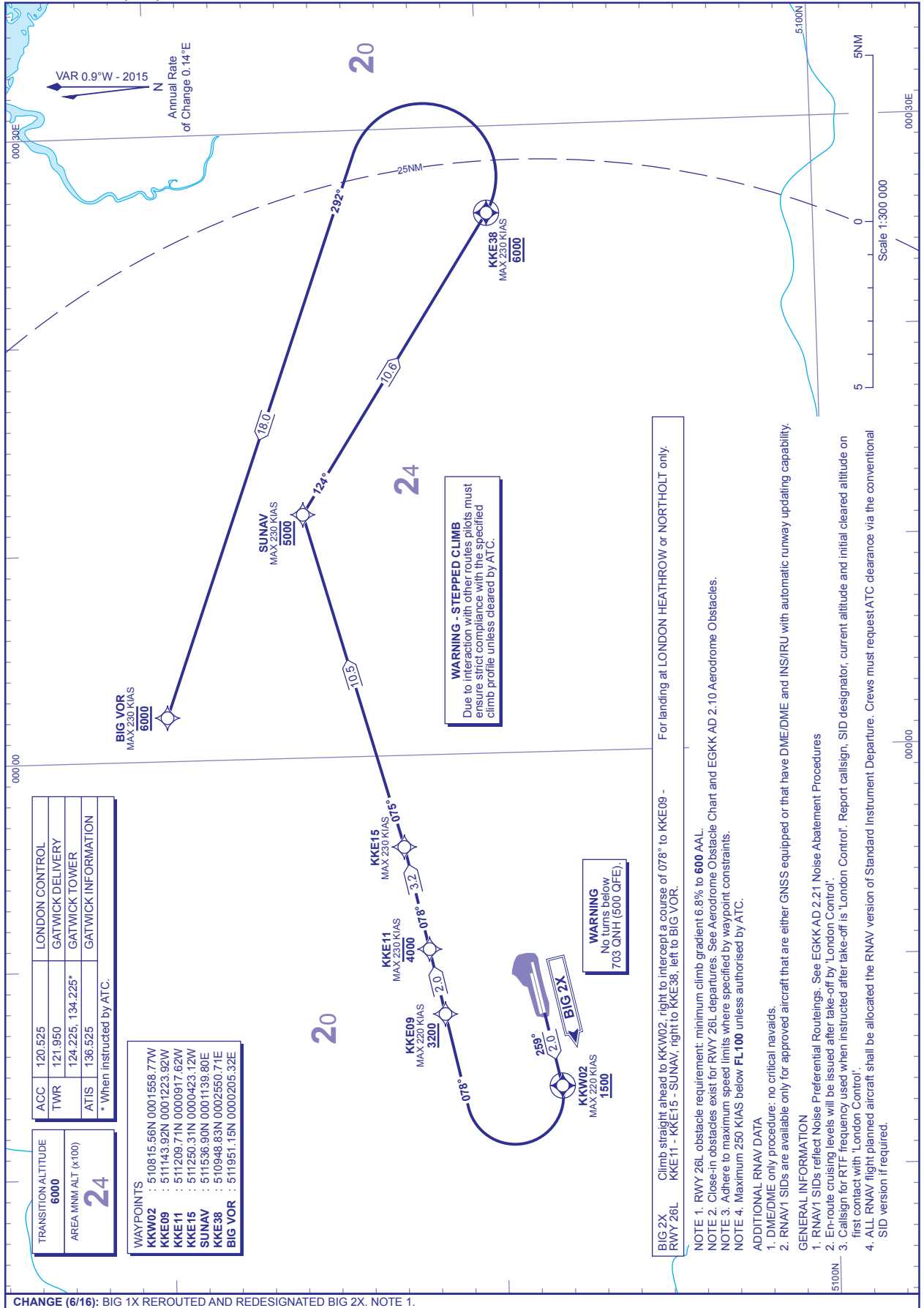


CHANGE (6/16): LAM 1X REROUTED AND REDESIGNATED LAM 2X. NOTE 1.  
AERO INFO DATE 17 FEB 16

**RNAV1 (DME/DME or GNSS)  
STANDARD DEPARTURE CHART -  
INSTRUMENT (SID) - ICAO**

DISTANCES IN NAUTICAL MILES  
TRACKS ARE MAGNETIC  
ALTITUDES AND ELEVATIONS ARE IN FEET

**LONDON GATWICK  
RWY 26L  
BIG 2X**



ACC	120.525	LONDON CONTROL
TWR	121.950	GATWICK DELIVERY
	124.225, 134.225*	GATWICK TOWER
ATIS	136.525	GATWICK INFORMATION
* When instructed by ATC.		

TRANSITION ALTITUDE	6000
AREA MNM ALT (x100)	24
<b>WAYPOINTS</b>	
KKW02	: 510815.56N 0001558.77W
KKE09	: 511143.92N 0001223.92W
KKE11	: 511209.71N 0000917.62W
KKE15	: 511250.31N 0000423.12W
SUNAV	: 511536.90N 0001139.80E
KKE38	: 510948.83N 0002950.77E
BIG VOR	: 511951.15N 0000205.32E

**BIG 2X RWY 26L** Climb straight ahead to KKW02, right to intercept a course of 078° to KKE09 - For landing at LONDON HEATHROW or NORTHOLT only.

**NOTE 1.** RWY 26L, obstacle requirement: minimum climb gradient 6.8% to 600 AAL.  
**NOTE 2.** Close-in obstacles exist for RWY 26L, departures. See Aerodrome Obstacle Chart and EGKK AD 2.10 Aerodrome Obstacles.  
**NOTE 3.** Adhere to maximum speed limits where specified by waypoint constraints.  
**NOTE 4.** Maximum 250 KIAS below FL100 unless authorised by ATC.

**ADDITIONAL RNAV DATA**

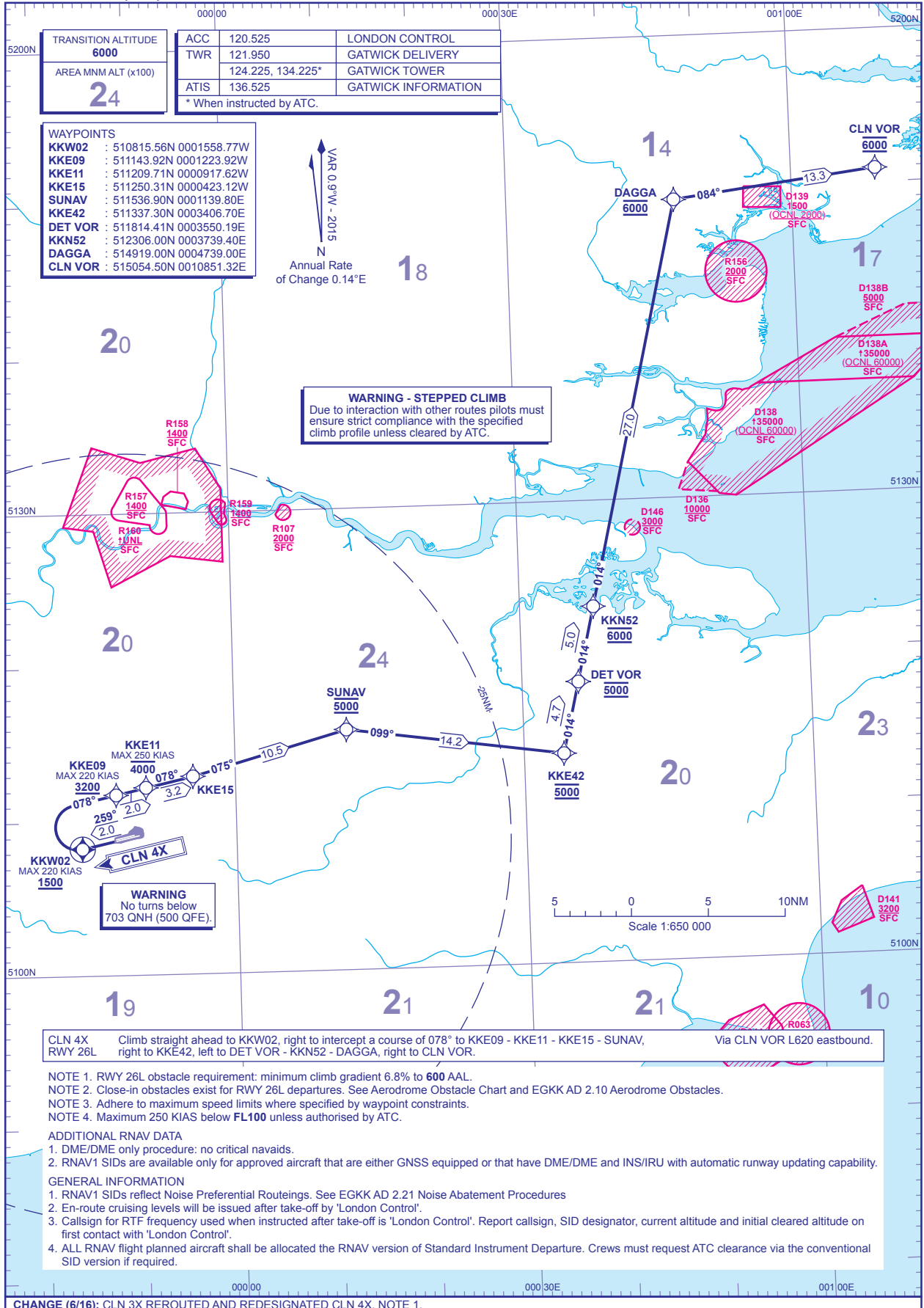
- DME/DME only procedure: no critical nav aids.
  - RNAV1 SIDs are available only for approved aircraft that have DME/DME and INS/IRU with automatic runway updating capability.
- GENERAL INFORMATION**
- RNAV1 SIDs reflect Noise Preferential Routeings. See EGKK AD 2.21 Noise Abatement Procedures.
  - En-route cruising levels will be issued after take-off by 'London Control'.
  - Call sign for RTF frequency used when instructed after take-off is 'London Control'. Report call sign, SID designator, current altitude and initial cleared altitude on first contact with 'London Control'.
  - ALL RNAV flight planned aircraft shall be allocated the RNAV version of Standard Instrument Departure. Crews must request ATC clearance via the conventional SID version if required.

**CHANGE (6/16):** BIG 1X REROUTED AND REDESIGNATED BIG 2X. NOTE 1.  
AERO INFO DATE 17 FEB 16

**RNAV1 (DME/DME or GNSS)  
STANDARD DEPARTURE CHART -  
INSTRUMENT (SID) - ICAO**

DISTANCES IN NAUTICAL MILES  
TRACKS ARE MAGNETIC  
ALTITUDES AND ELEVATIONS ARE IN FEET

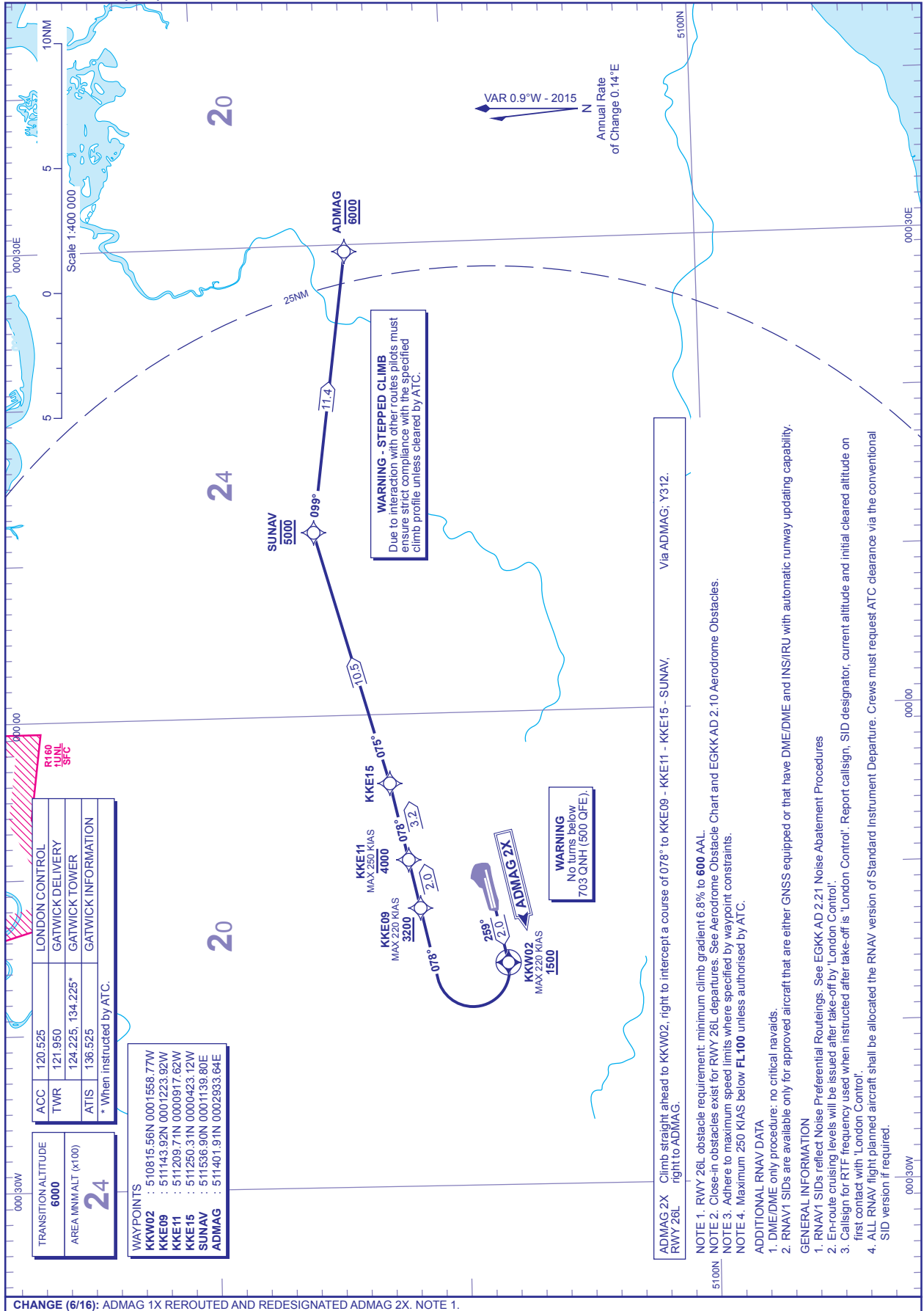
**LONDON GATWICK  
RWY 26L  
CLN 4X**



**RNAV1 (DME/DME or GNSS)  
STANDARD DEPARTURE CHART -  
INSTRUMENT (SID) - ICAO**

DISTANCES IN NAUTICAL MILES  
TRACKS ARE MAGNETIC  
ALTITUDES AND ELEVATIONS ARE IN FEET

**LONDON GATWICK  
RWY 26L  
ADMAG 2X**



**CHANGE (6/16):** ADMAG 1X REROUTED AND REDESIGNATED ADMAG 2X. NOTE 1.  
AERO INFO DATE 15 FEB 16