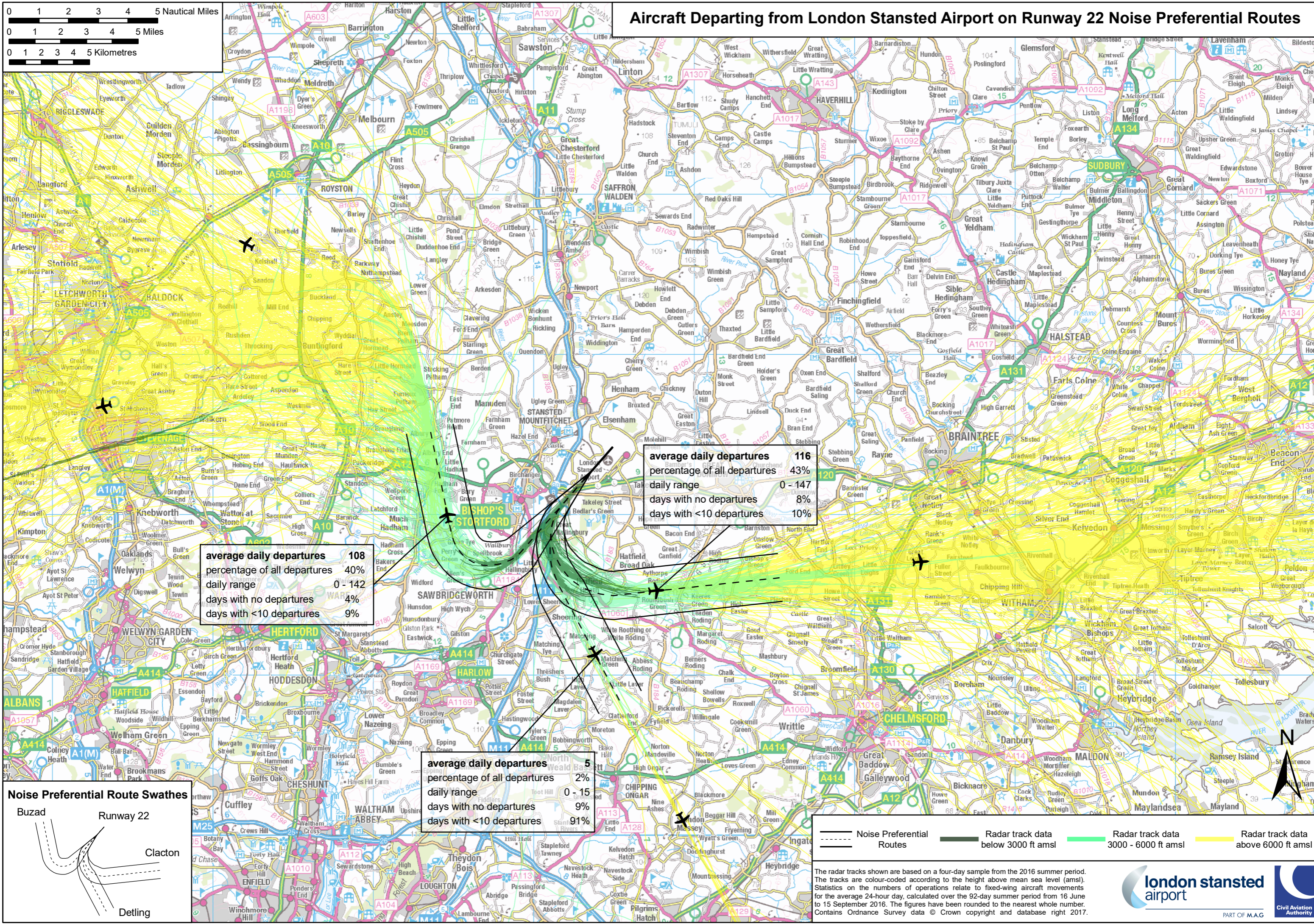
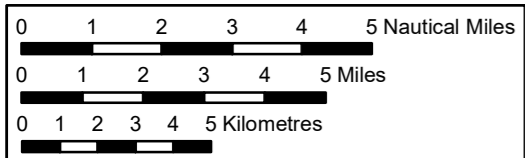


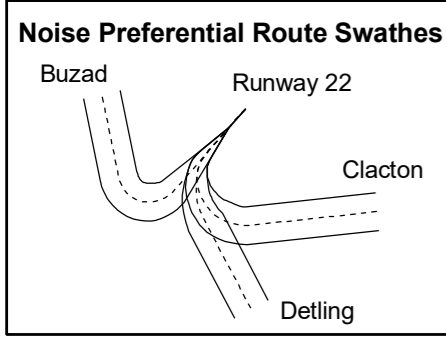
Aircraft Departing from London Stansted Airport on Runway 22 Noise Preferential Routes



average daily departures 108
percentage of all departures 40%
daily range 0 - 142
days with no departures 4%
days with <10 departures 9%

average daily departures 116
percentage of all departures 43%
daily range 0 - 147
days with no departures 8%
days with <10 departures 10%

average daily departures 5
percentage of all departures 2%
daily range 0 - 15
days with no departures 9%
days with <10 departures 91%



--- Noise Preferential Routes
 — Radar track data below 3000 ft amsl
 — Radar track data 3000 - 6000 ft amsl
 — Radar track data above 6000 ft amsl

The radar tracks shown are based on a four-day sample from the 2016 summer period. The tracks are colour-coded according to the height above mean sea level (amsl). Statistics on the numbers of operations relate to fixed-wing aircraft movements for the average 24-hour day, calculated over the 92-day summer period from 16 June to 15 September 2016. The figures have been rounded to the nearest whole number. Contains Ordnance Survey data © Crown copyright and database right 2017.