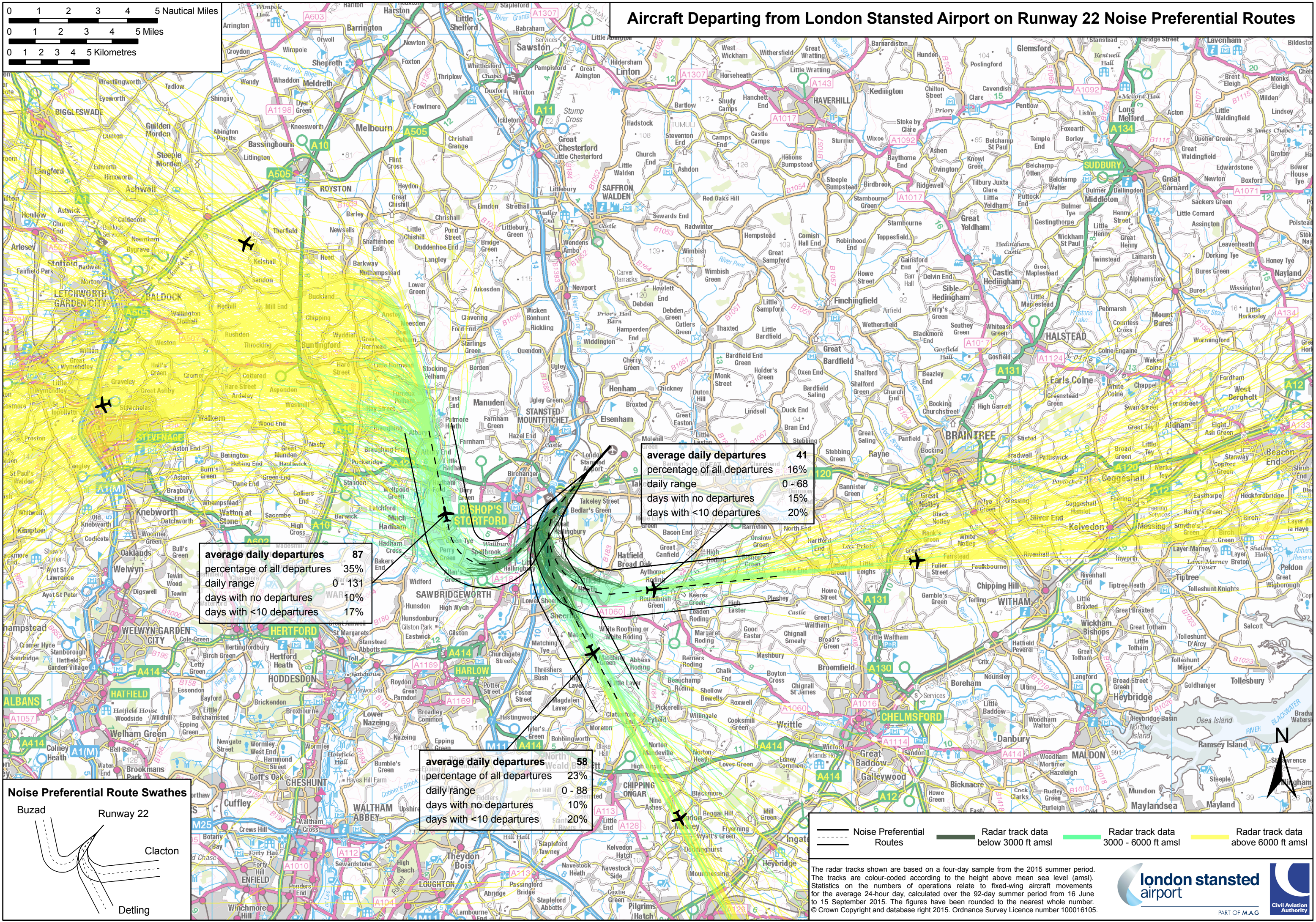
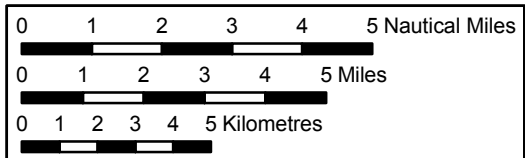


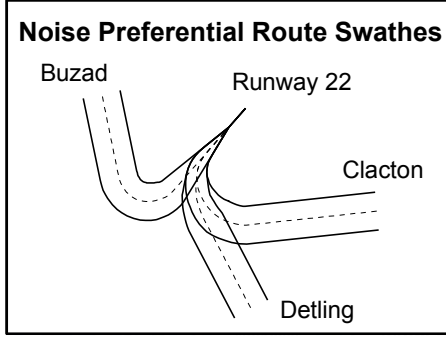
# Aircraft Departing from London Stansted Airport on Runway 22 Noise Preferential Routes



average daily departures 87  
 percentage of all departures 35%  
 daily range 0 - 131  
 days with no departures 10%  
 days with <10 departures 17%

average daily departures 41  
 percentage of all departures 16%  
 daily range 0 - 68  
 days with no departures 15%  
 days with <10 departures 20%

average daily departures 58  
 percentage of all departures 23%  
 daily range 0 - 88  
 days with no departures 10%  
 days with <10 departures 20%



— Noise Preferential Routes  
 — Radar track data below 3000 ft amsl  
 — Radar track data 3000 - 6000 ft amsl  
 — Radar track data above 6000 ft amsl

The radar tracks shown are based on a four-day sample from the 2015 summer period. The tracks are colour-coded according to the height above mean sea level (amsl). Statistics on the numbers of operations relate to fixed-wing aircraft movements for the average 24-hour day, calculated over the 92-day summer period from 16 June to 15 September 2015. The figures have been rounded to the nearest whole number. © Crown Copyright and database right 2015. Ordnance Survey Licence number 100016105.