

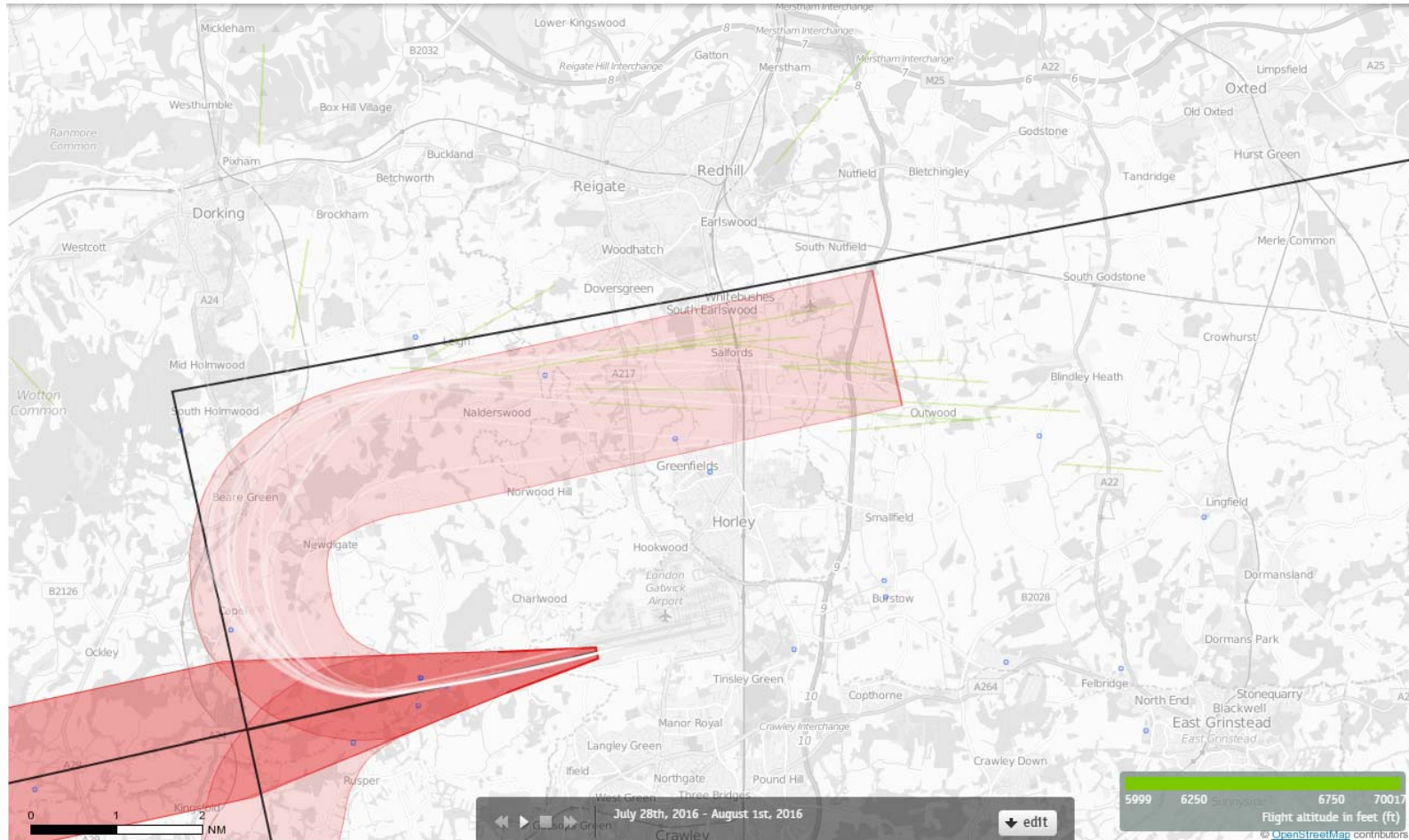
26 LAMBOURNE Route 4

Altitude Bands

6000-7000ft

Post RNAV1 - Amendment

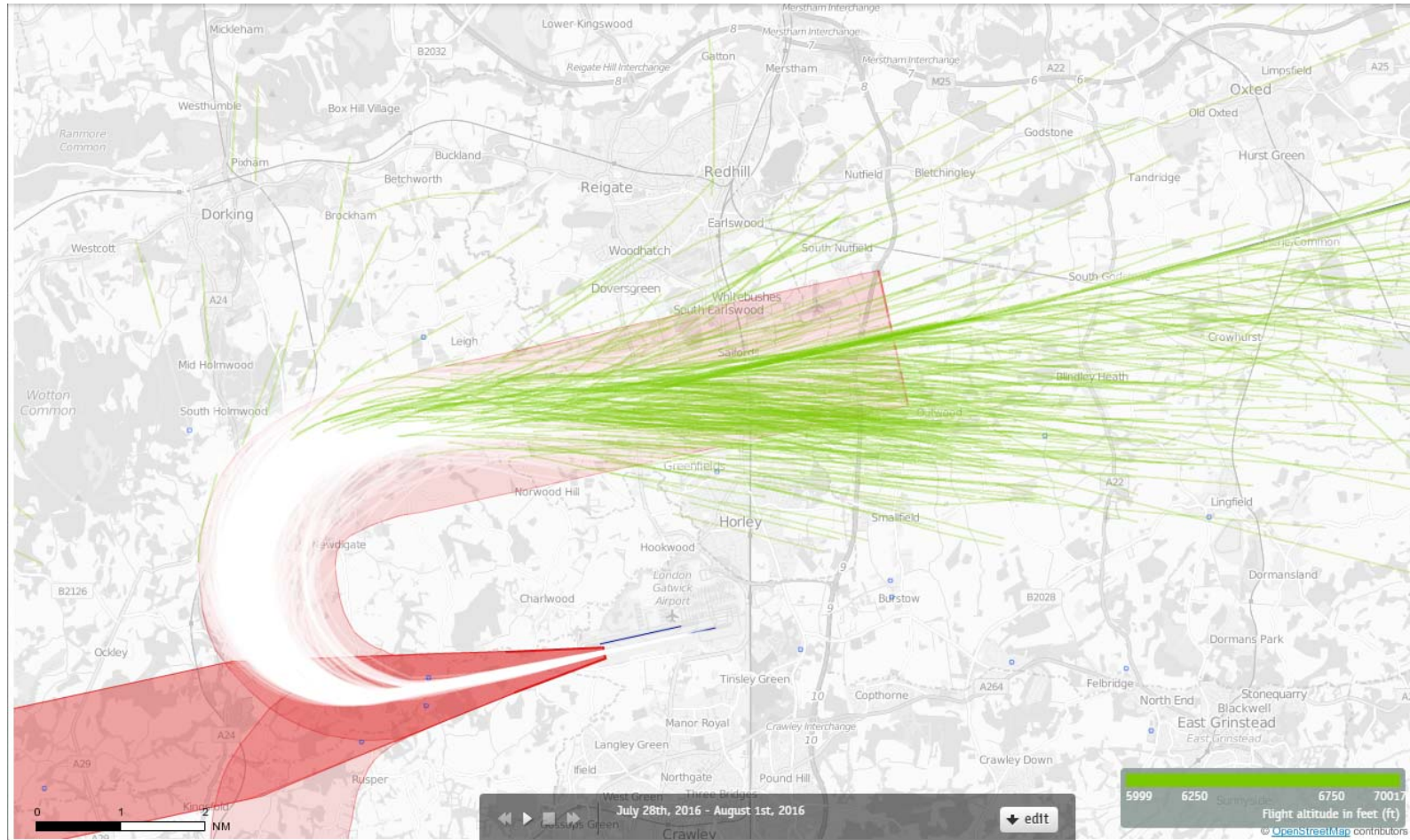
26 LAM Departures 28th-31st July 2016 6000-7000 feet (21 Aircraft – CONVENTIONAL ONLY)



Green plots show the points at which an aircraft was between 6000 and 7000ft altitude.

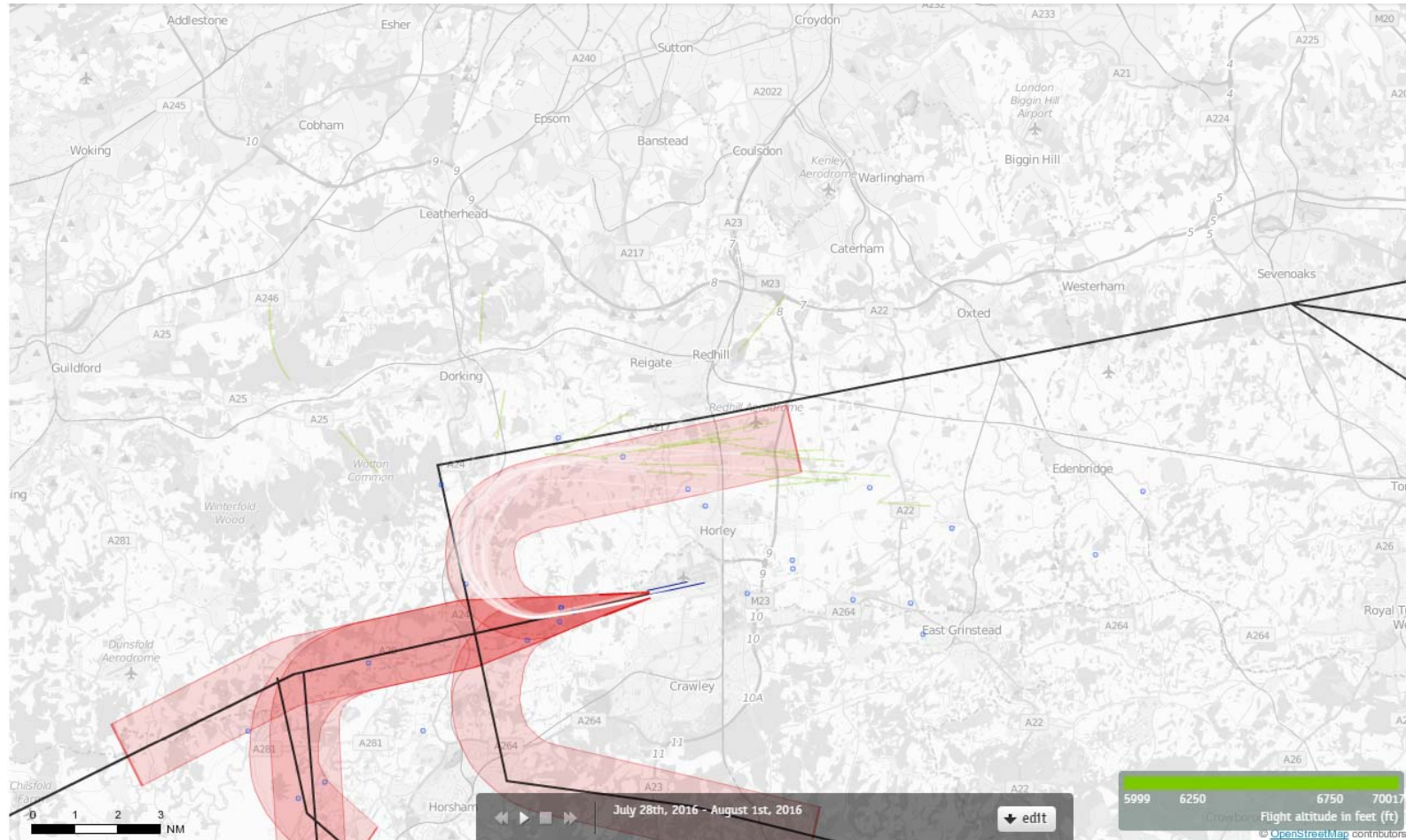
The SID line shown on this map displays the previous P-RNAV SID design

26 LAM Departures 28th-31st July 2016 6000-7000 feet (678 Aircraft – RNAV1 ONLY)



Green plots show the points at which an aircraft was between 6000 and 7000ft altitude.

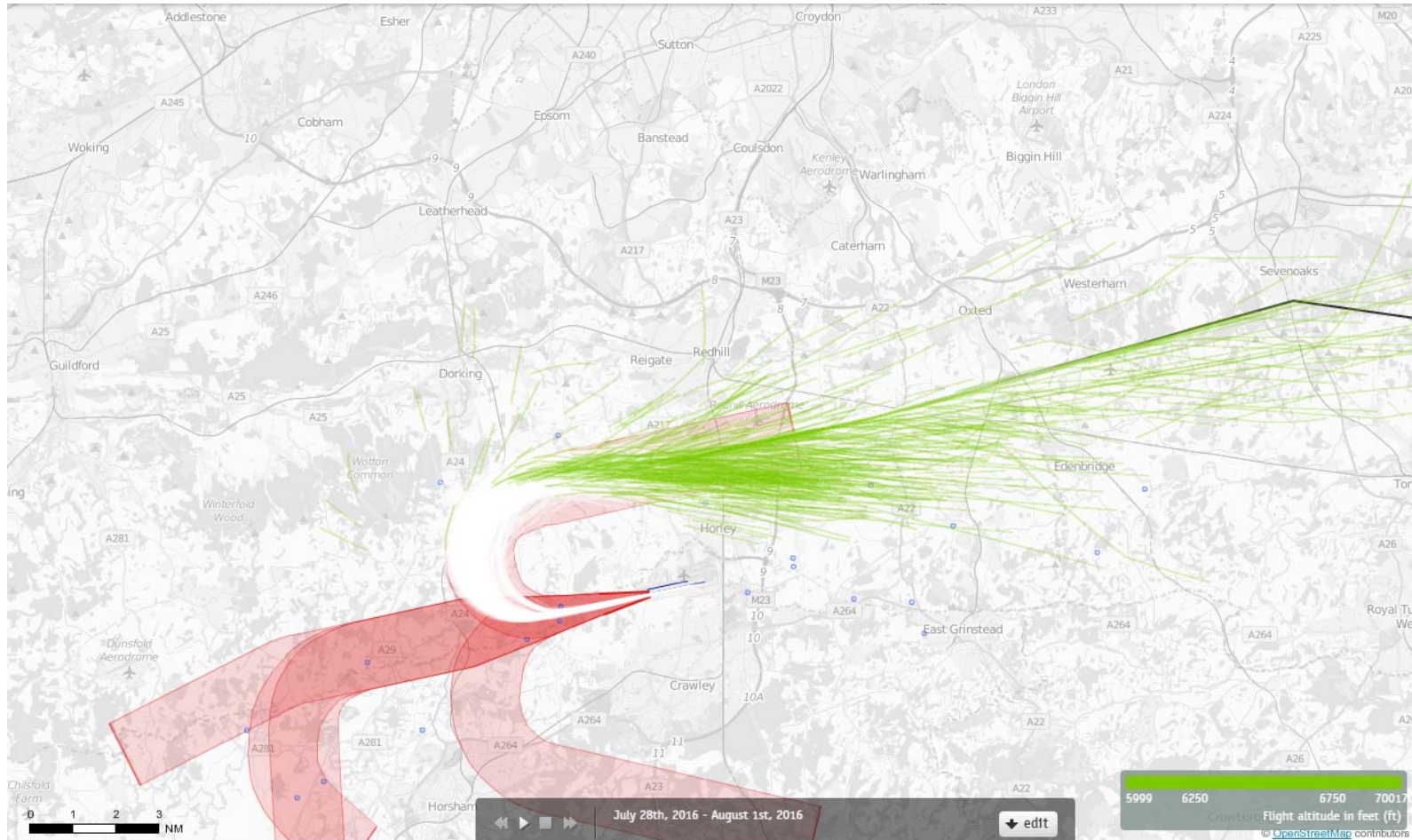
26 LAM Departures 28th-31st July 2016 6000-7000 feet (21 Aircraft – CONVENTIONAL ONLY)



Green plots show the points at which an aircraft was between 6000 and 7000ft altitude.

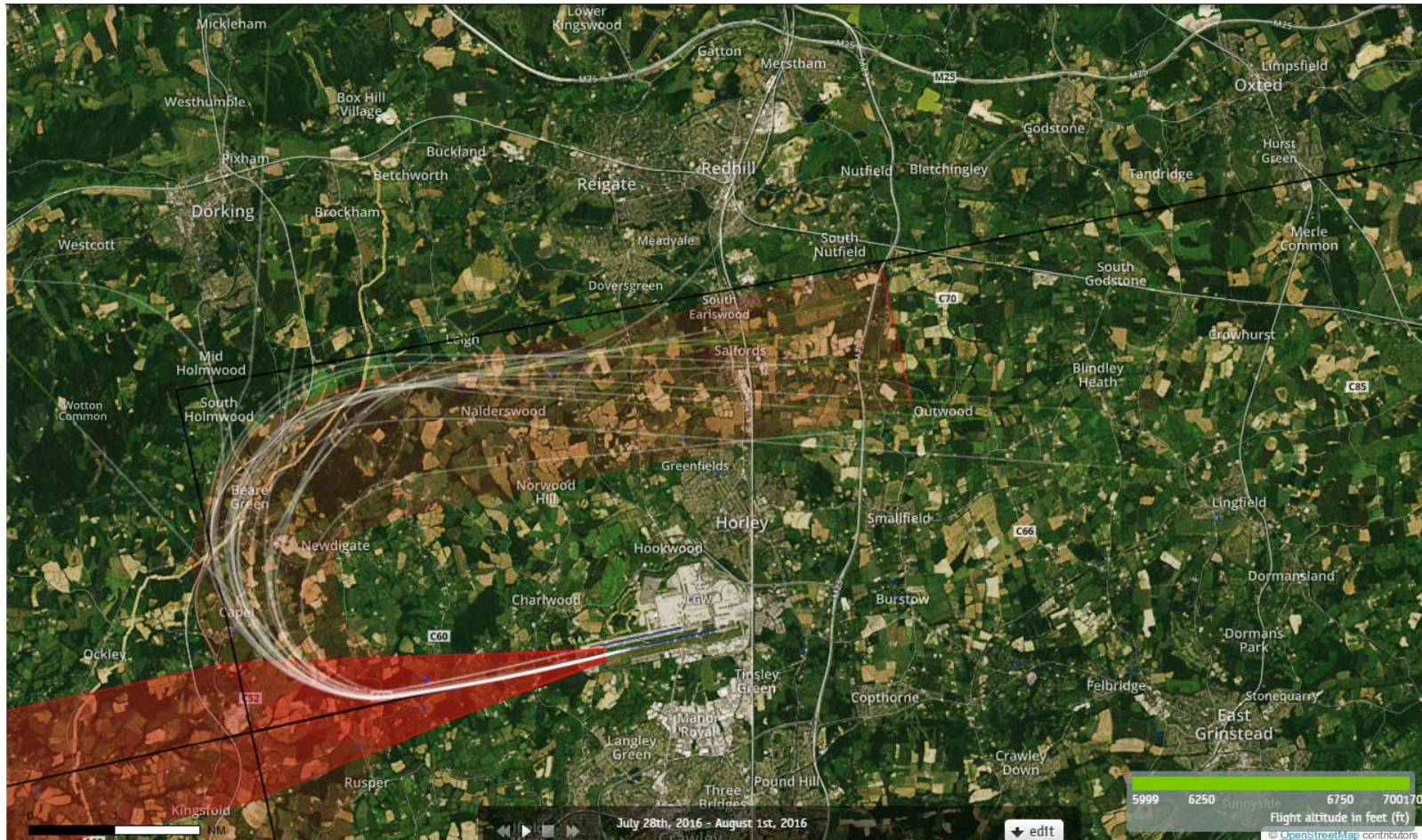
The SID line shown on this map displays the previous P-RNAV SID design

26 LAM Departures 28th-31st July 2016 6000-7000 feet (678 Aircraft – RNAV1 ONLY)



Green plots show the points at which an aircraft was between 6000 and 7000ft altitude.

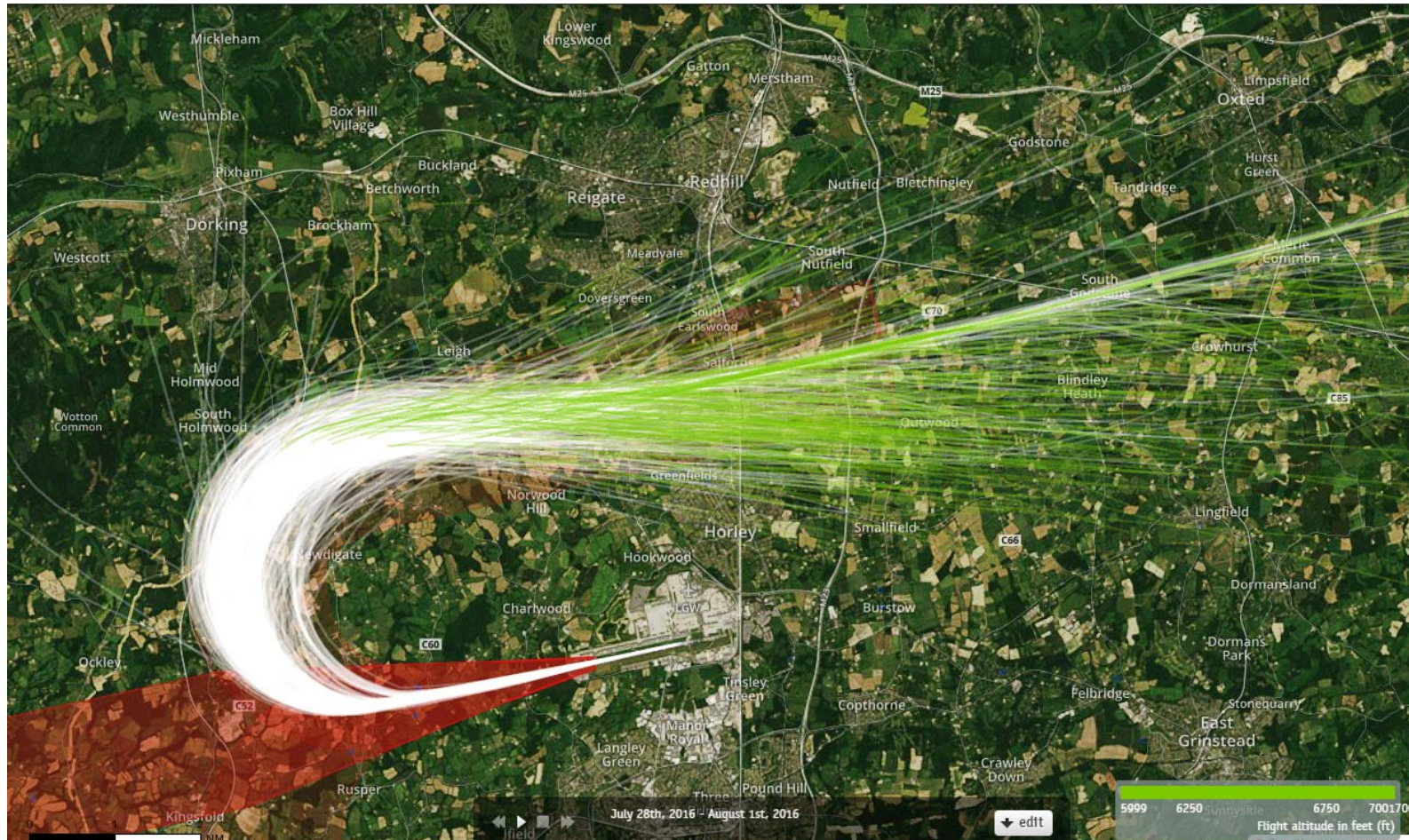
26 LAM Departures 28th-31st July 2016 6000-7000 feet (21 Aircraft – CONVENTIONAL ONLY)



Green plots show the points at which an aircraft was between 6000 and 7000ft altitude.

The SID line shown on this map displays the previous P-RNAV SID design

26 LAM Departures 28th-31st July 2016 6000-7000 feet (678 Aircraft – RNAV1 ONLY)



Green plots show the points at which an aircraft was between 6000 and 7000ft altitude.

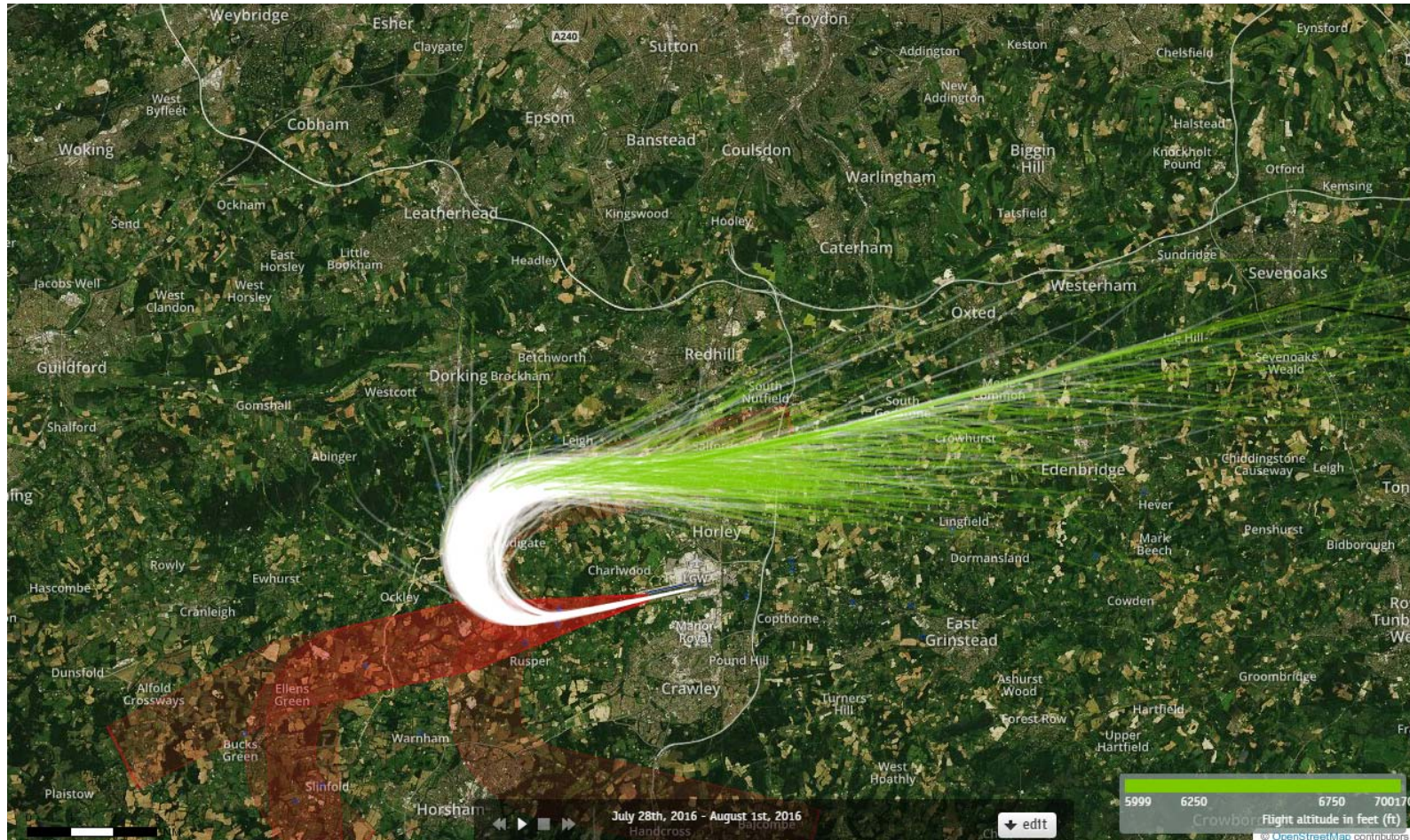
26 LAM Departures 28th-31st July 2016 6000-7000 feet (21 Aircraft – CONVENTIONAL ONLY)



Green plots show the points at which an aircraft was between 6000 and 7000ft altitude.

The SID line shown on this map displays the previous P-RNAV SID design

26 LAM Departures 28th-31st July 2016 6000-7000 feet (678 Aircraft – RNAV1 ONLY)



Green plots show the points at which an aircraft was between 6000 and 7000ft altitude.