

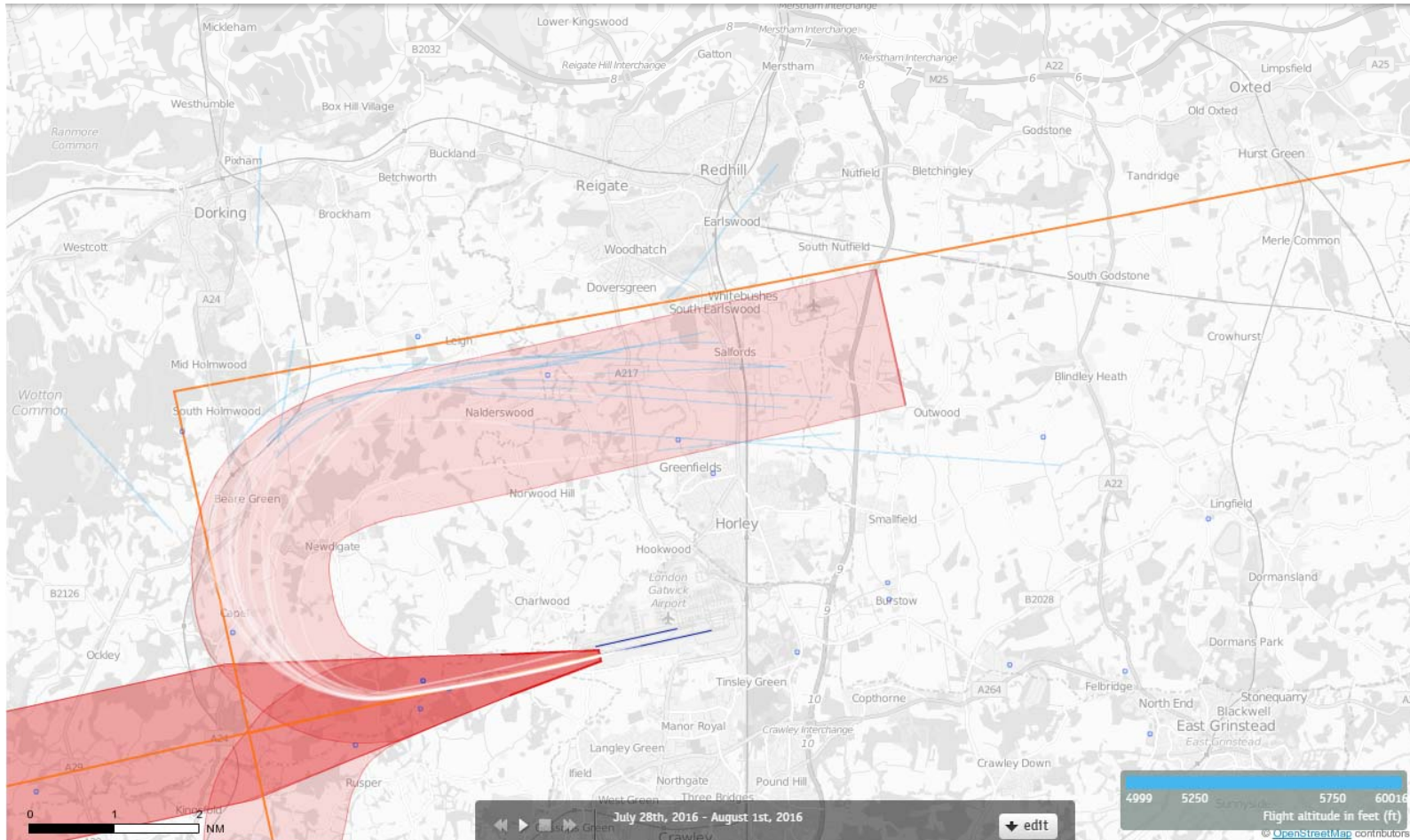
26 LAMBOURNE Route 4

Altitude Bands

5000-6000ft

Post RNAV1 - Amendment

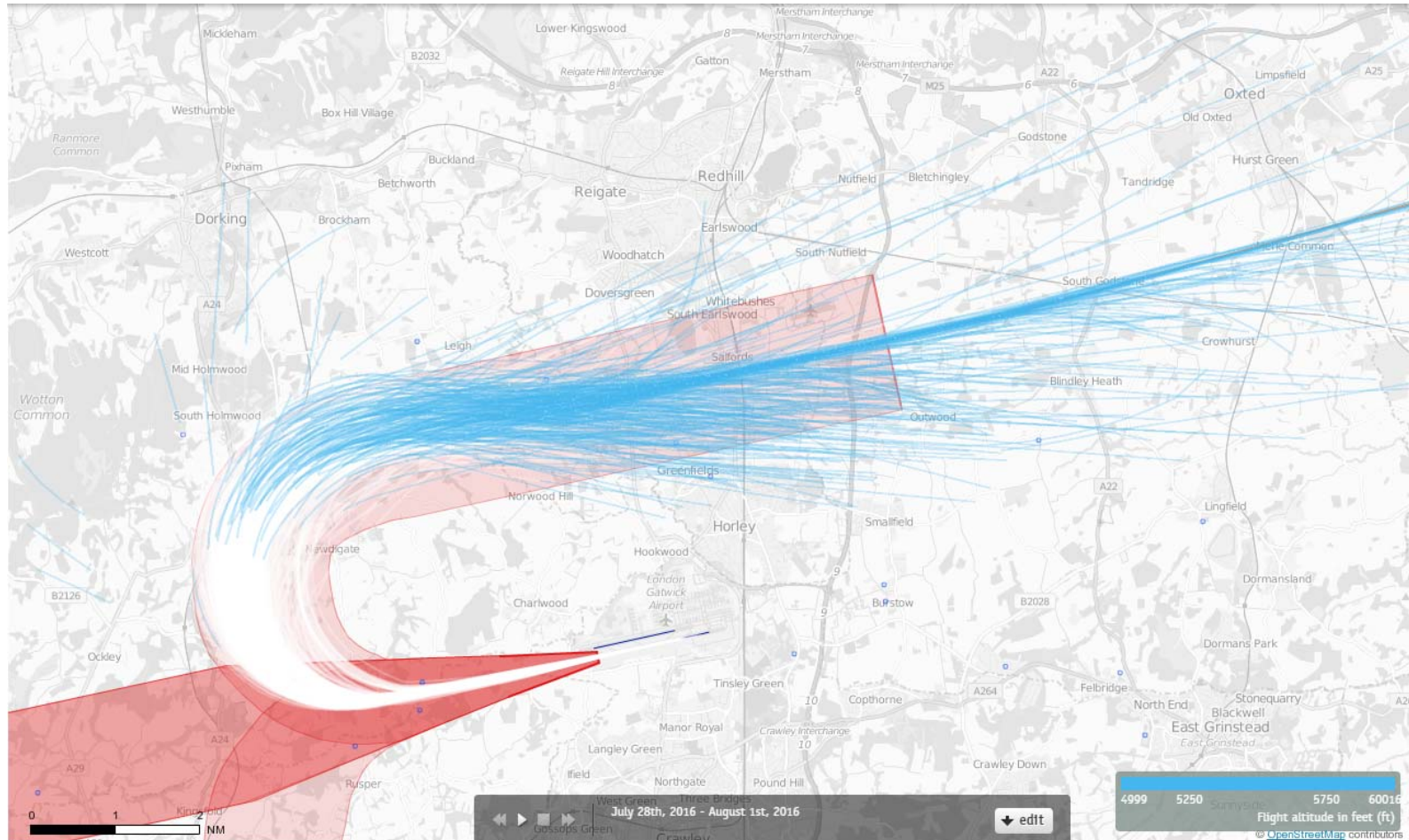
26 LAM Departures 28th-31st July 2016 5000-6000 feet (21 Aircraft – CONVENTIONAL ONLY)



Blue plots show the points at which an aircraft was between 5000 and 6000ft altitude.

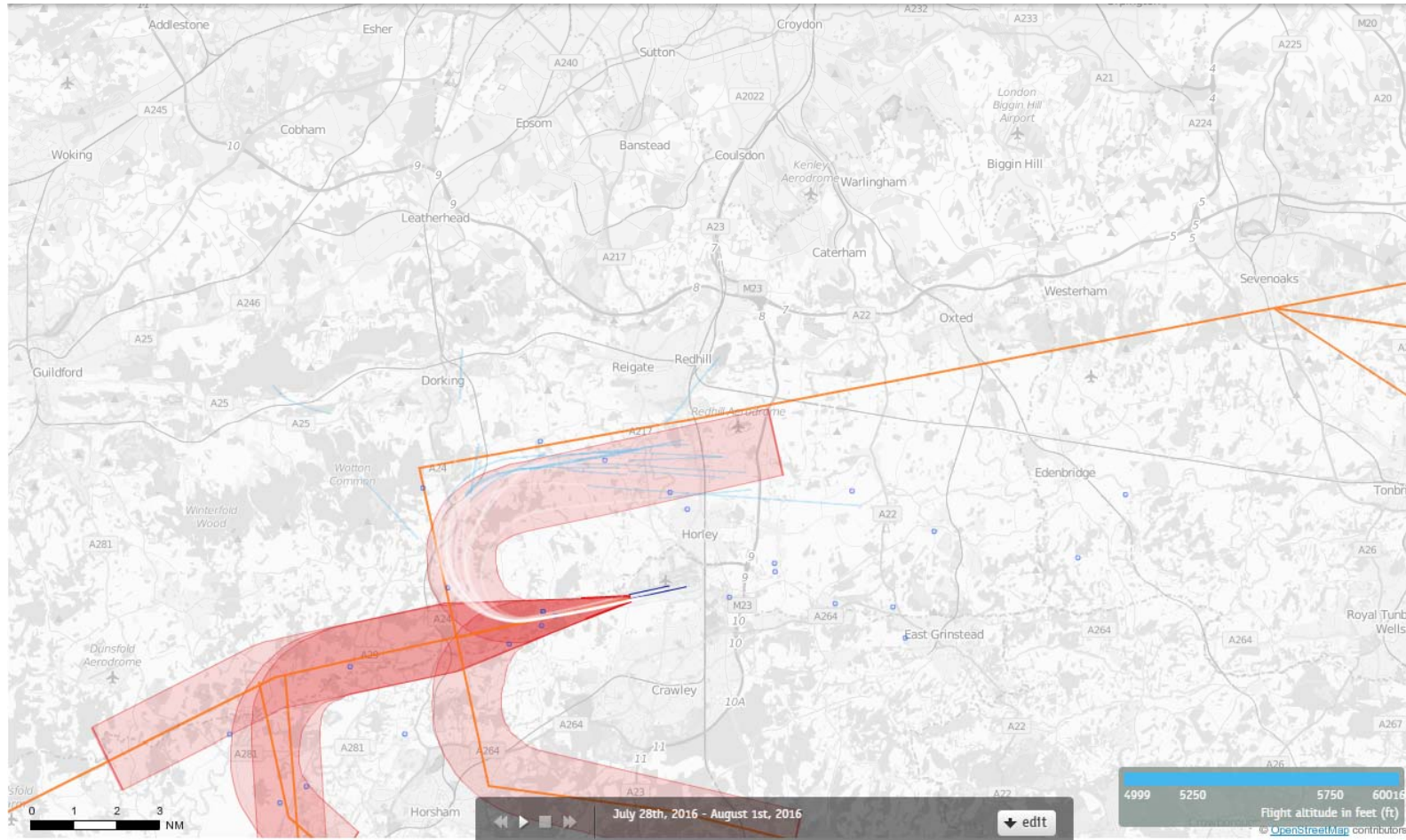
The SID line shown on this map displays the previous P-RNAV SID design

26 LAM Departures 28th-31st July 2016 5000-6000 feet (776 Aircraft – RNAV1 ONLY)



Blue plots show the points at which an aircraft was between 5000 and 6000ft altitude.

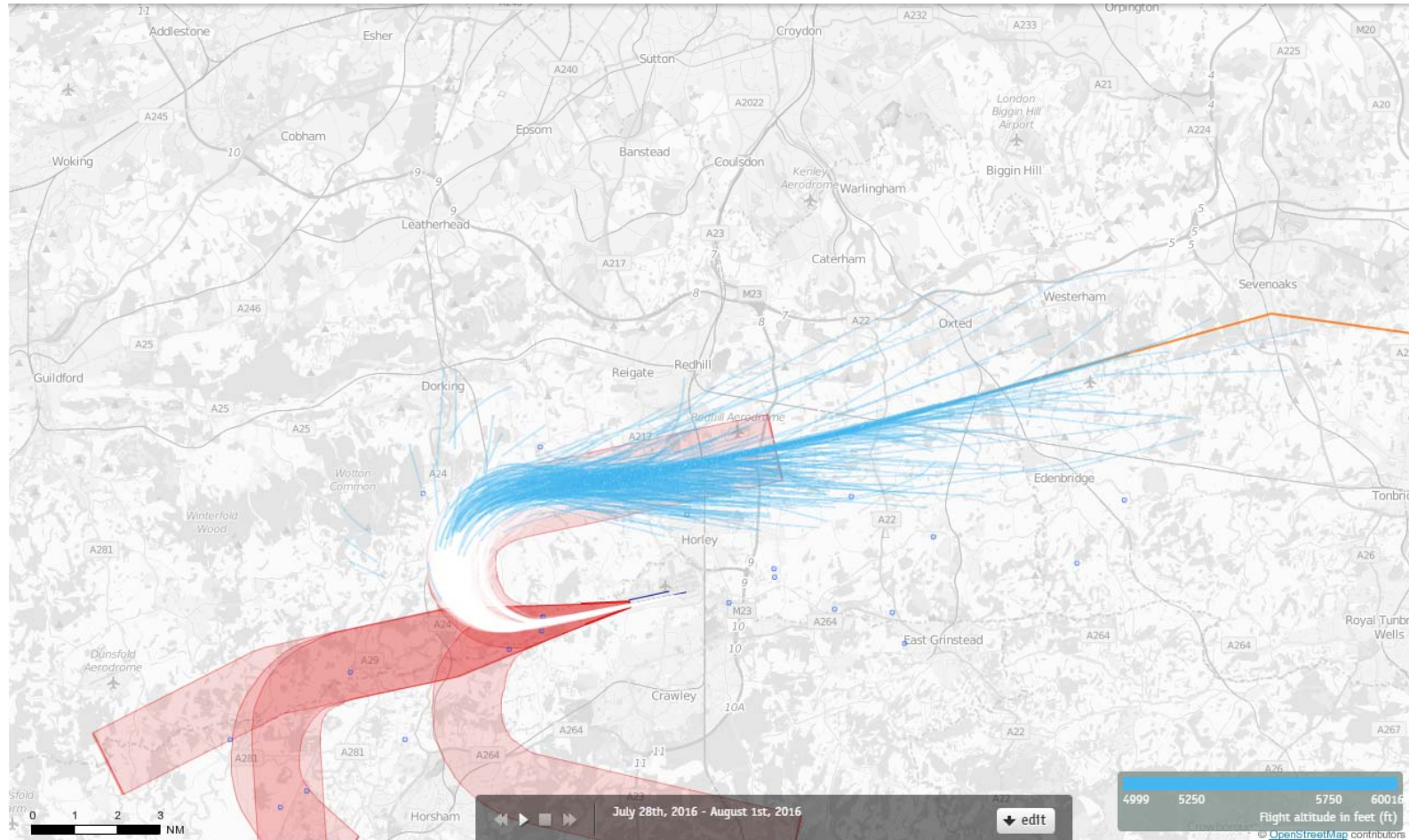
26 LAM Departures 28th-31st July 2016 5000-6000 feet (21 Aircraft – CONVENTIONAL ONLY)



Blue plots show the points at which an aircraft was between 5000 and 6000ft altitude.

The SID line shown on this map displays the previous P-RNAV SID design

26 LAM Departures 28th-31st July 2016 5000-6000 feet (776 Aircraft – RNAV1 ONLY)



Blue plots show the points at which an aircraft was between 5000 and 6000ft altitude.

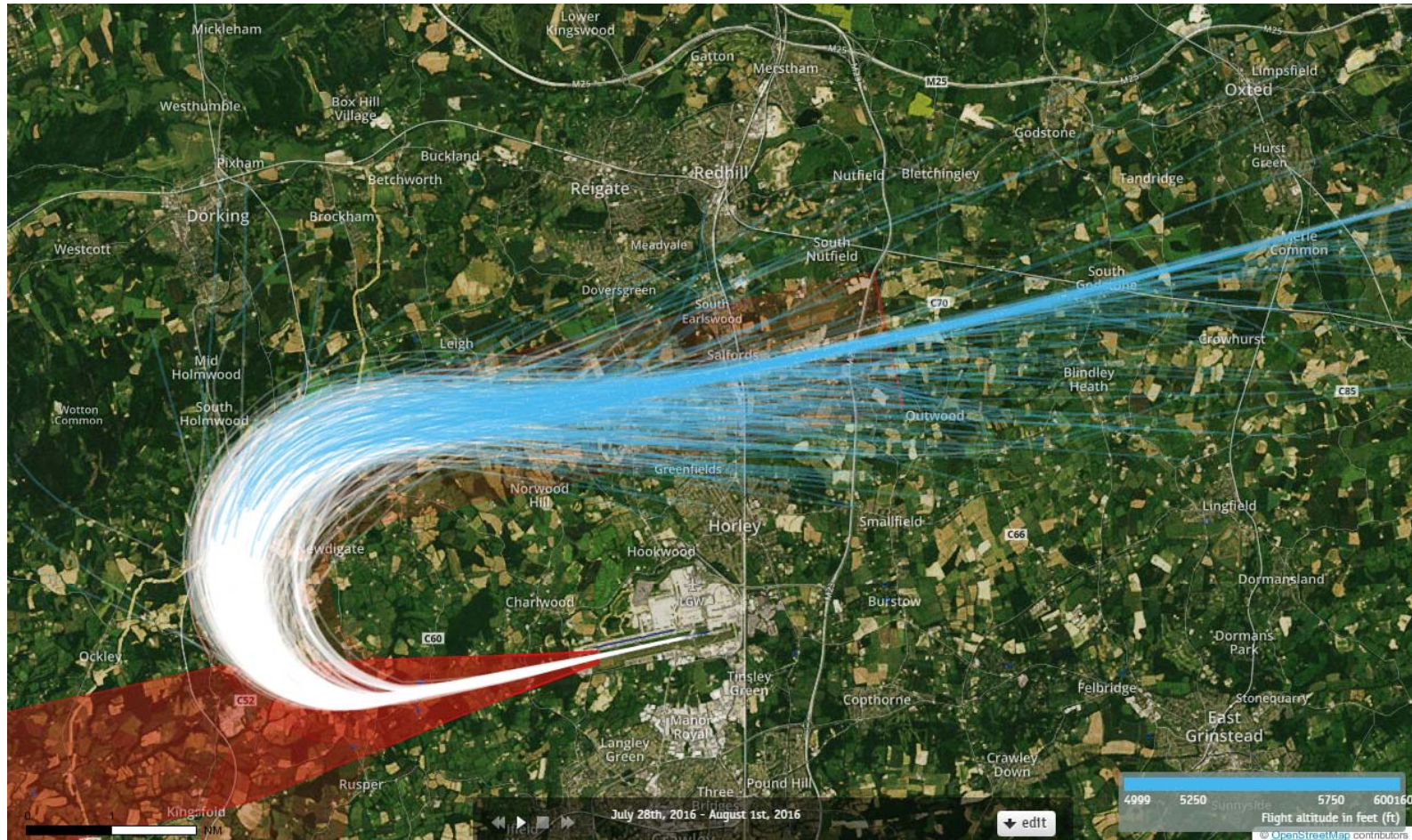
26 LAM Departures 28th-31st July 2016 5000-6000 feet (21 Aircraft – CONVENTIONAL ONLY)



Blue plots show the points at which an aircraft was between 5000 and 6000ft altitude.

The SID line shown on this map displays the previous P-RNAV SID design

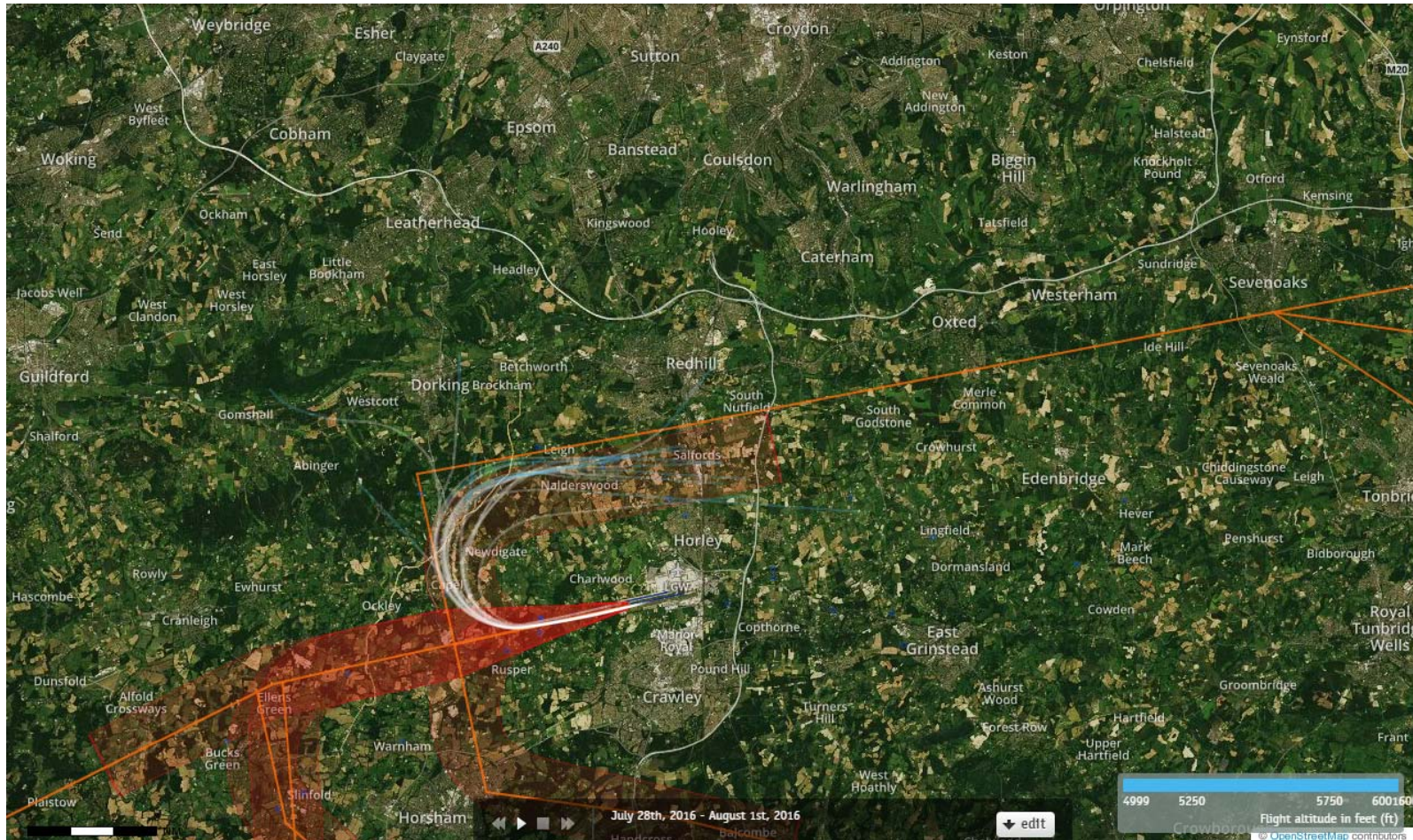
26 LAM Departures 28th-31st July 2016 5000-6000 feet (776 Aircraft – RNAV1 ONLY)



Blue plots show the points at which an aircraft was between 5000 and 6000ft altitude.

26 LAM Departures 28th-31st July 2016

5000-6000 feet (21 Aircraft – CONVENTIONAL ONLY)



Blue plots show the points at which an aircraft was between 5000 and 6000ft altitude.

The SID line shown on this map displays the previous P-RNAV SID design

26 LAM Departures 25th -29th June 2016 5000-6000 feet (776 Aircraft – RNAV1 ONLY)



Blue plots show the points at which an aircraft was between 5000 and 6000ft altitude.