

26 LAMBOURNE

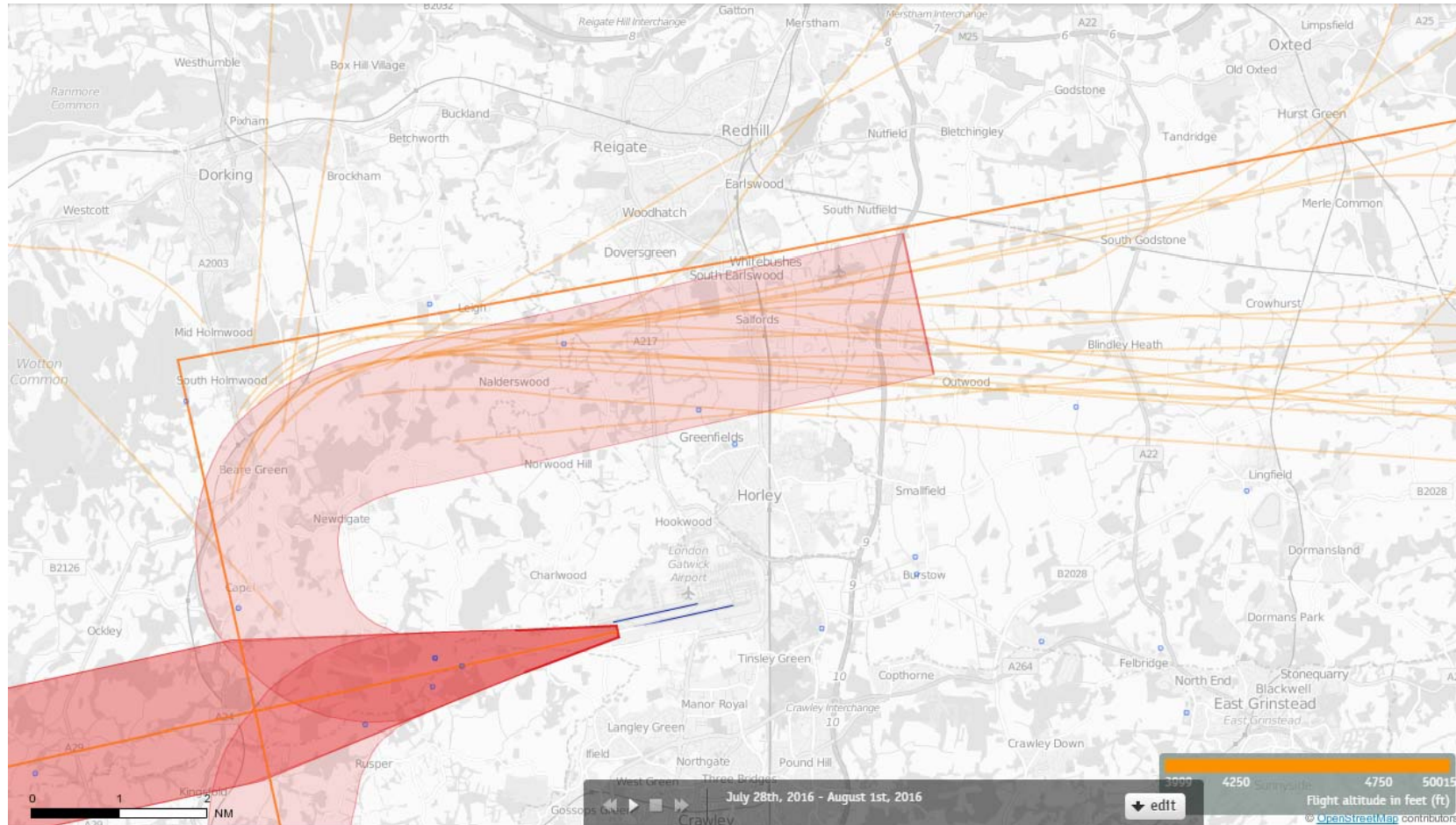
Route 4

Altitude Bands

4000-5000ft

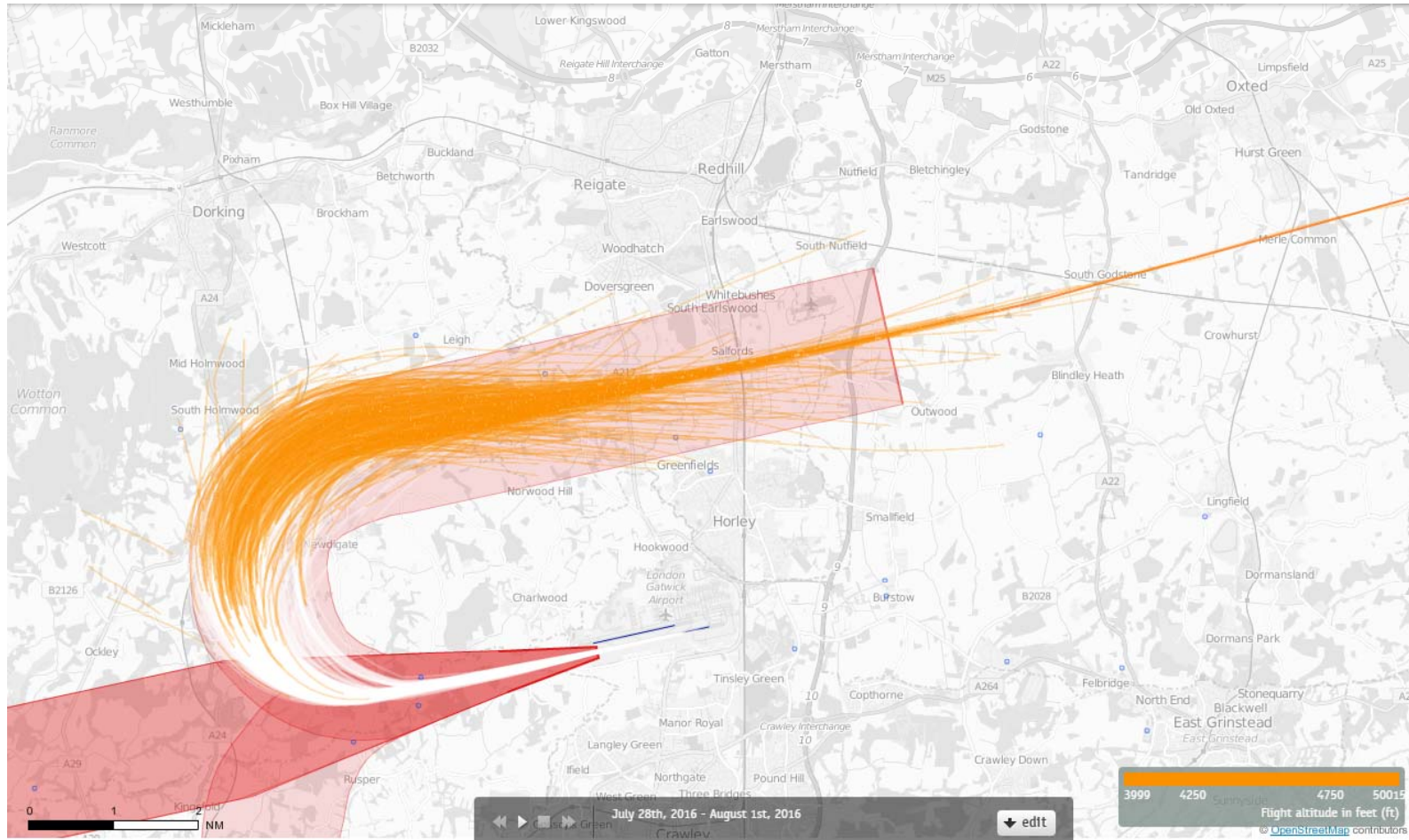
Post RNAV1 - Amendment

26 LAM Departures 28th – 31st July 2016 4000-5000 feet (21 Aircraft – CONVENTIONAL ONLY)



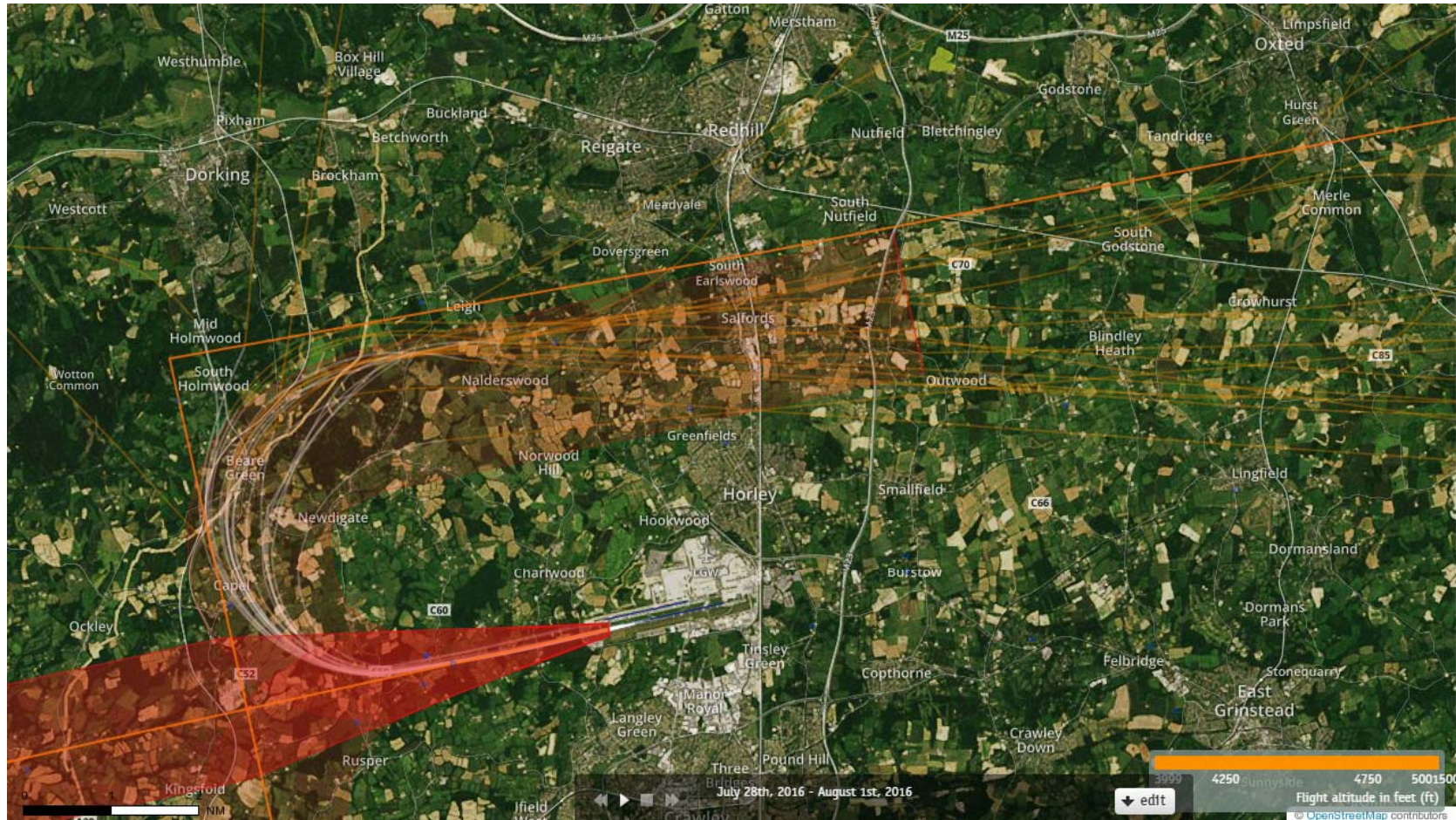
Orange plots show the points at which an aircraft was between 4000 and 5000ft altitude.

26 LAM Departures 28th – 31st July 2016 4000-5000 feet (678 Aircraft – RNAV1 ONLY)



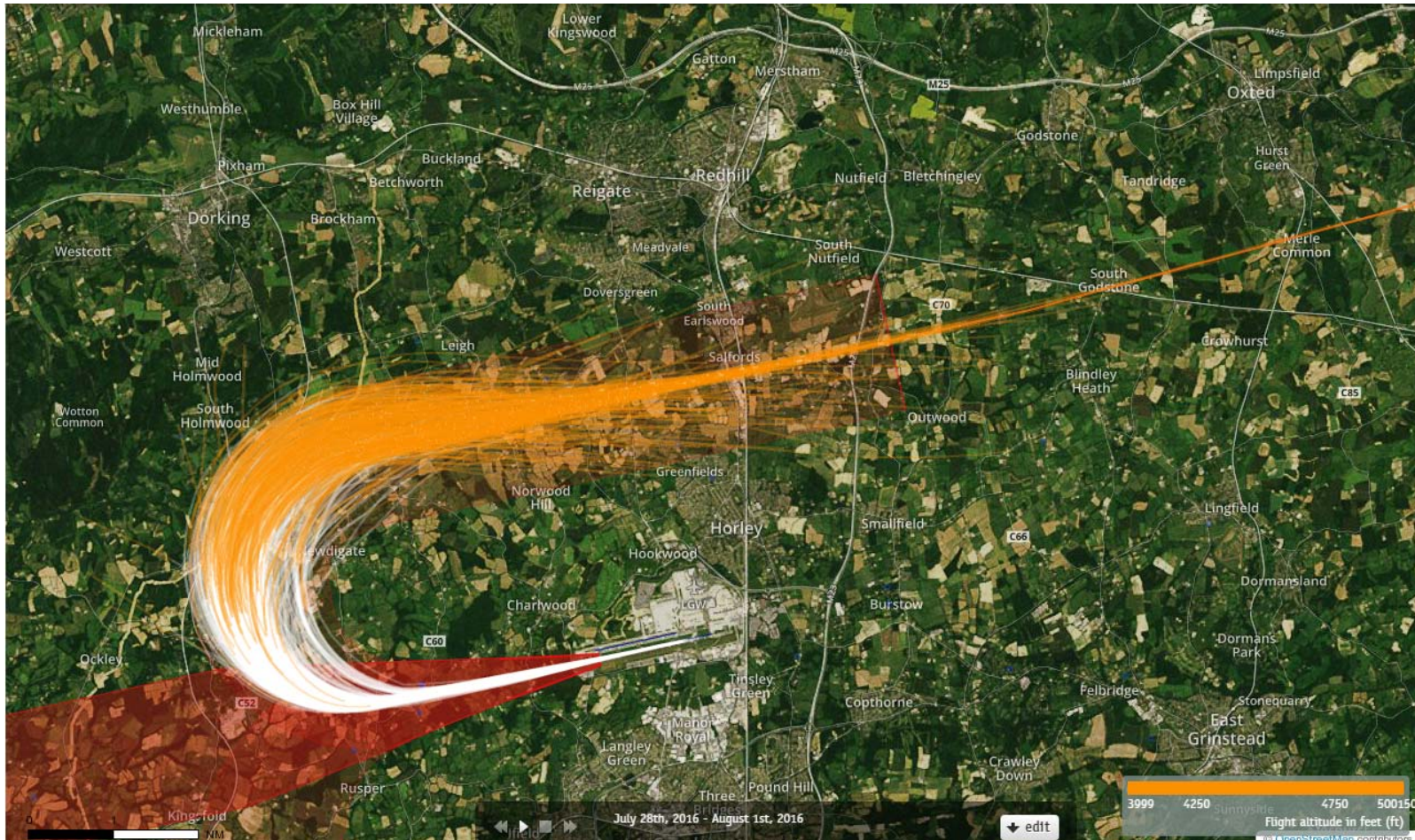
Orange plots show the points at which an aircraft was between 4000 and 5000ft altitude.

26 LAM Departures 28th – 31st July 2016 4000-5000 feet (21 Aircraft – CONVENTIONAL ONLY)



Orange plots show the points at which an aircraft was between 4000 and 5000ft altitude.

26 LAM Departures 28th – 31st July 2016 4000-5000 feet (678 Aircraft – RNAV1 ONLY)



Orange plots show the points at which an aircraft was between 4000 and 5000ft altitude.