

26 LAMBOURNE

Route 4 Density Plots

Pre RNAV Trial (conv)

RNAV Trial

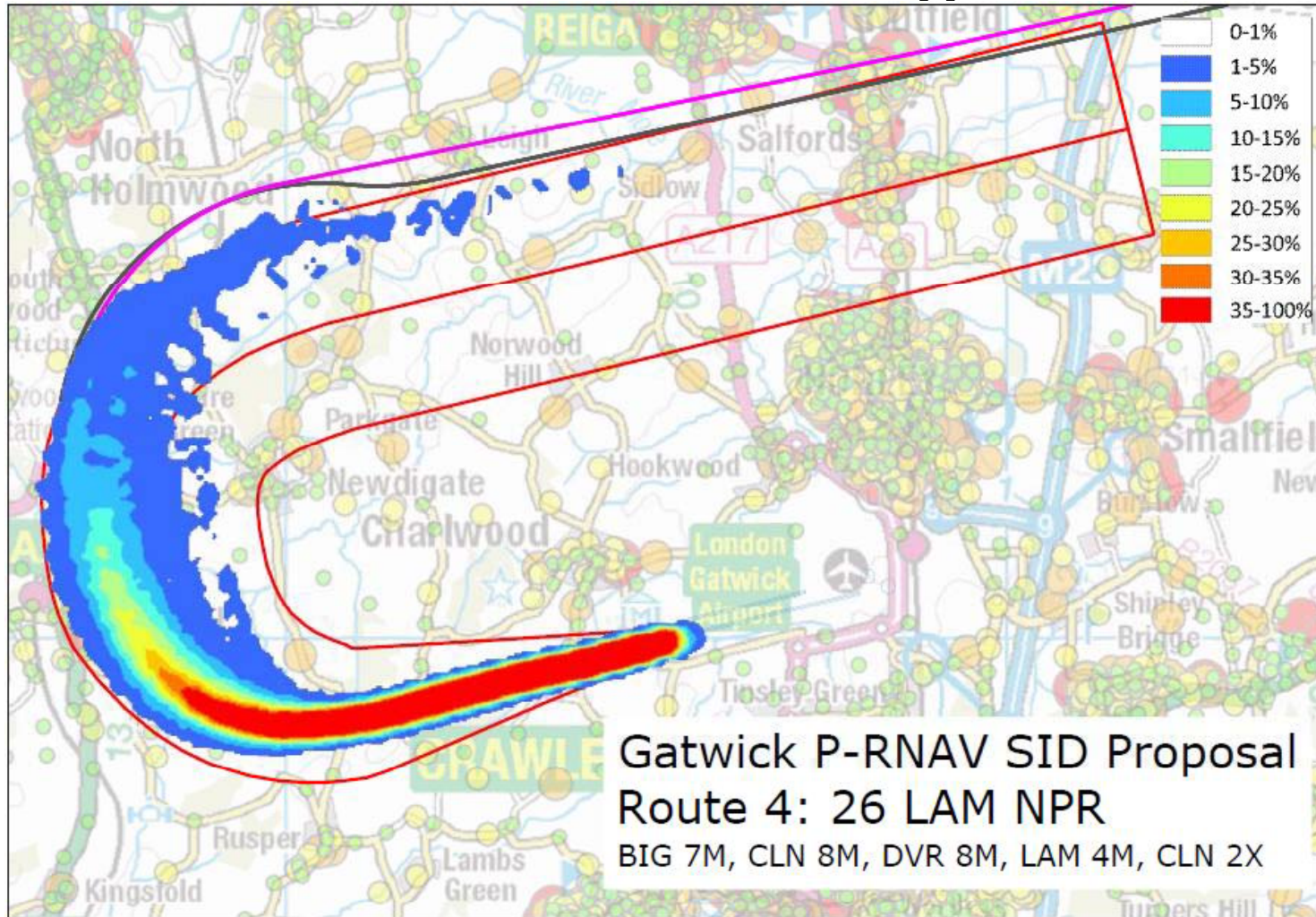
Pre/Post P-RNAV Implementation Conv + RNAV(2013/14)

RNAV Revised (June 2016)

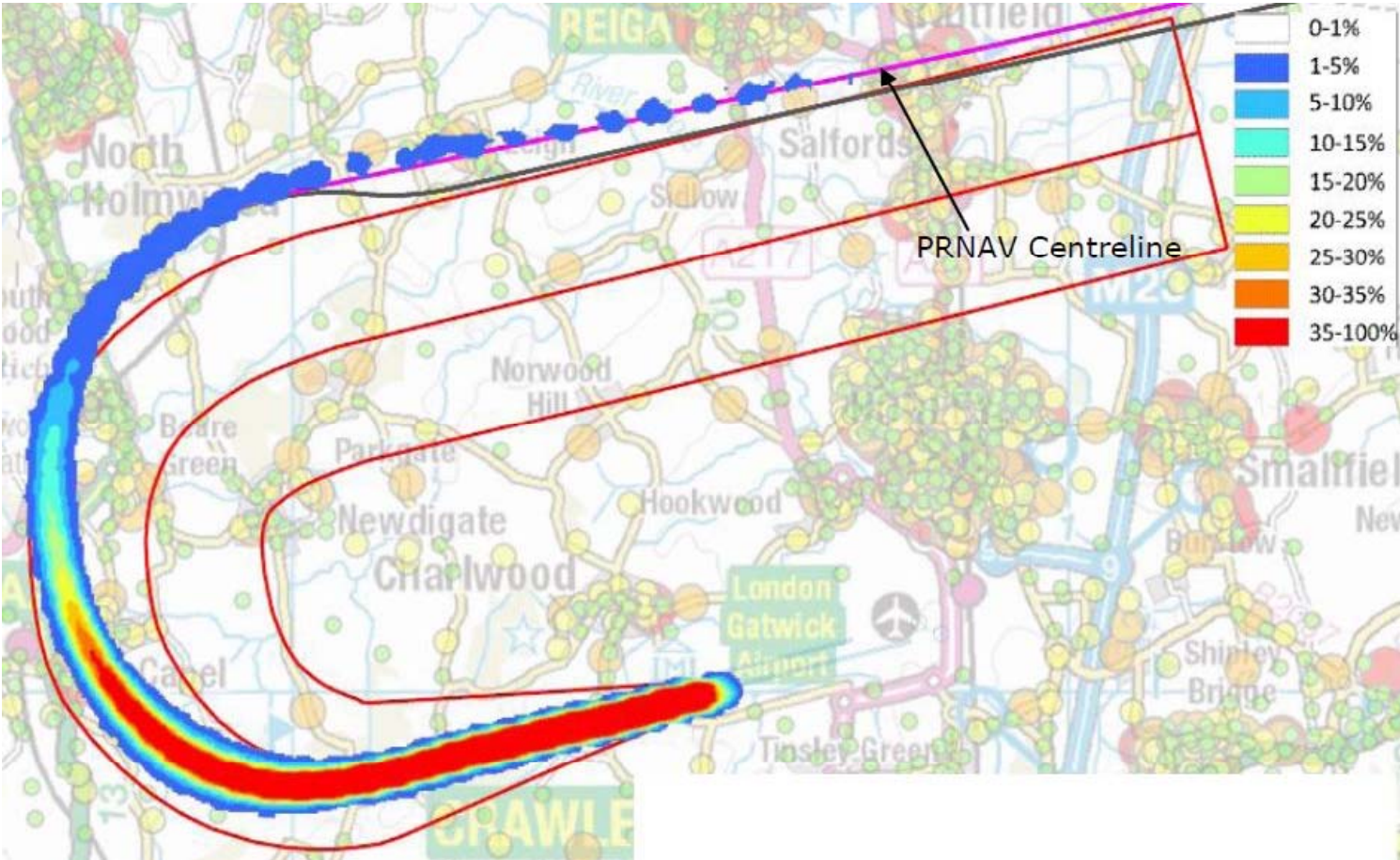
RNAV Revised (July 2016)

Conv (July 2016)

Conv Pre RNAV Trial (pre 2012)

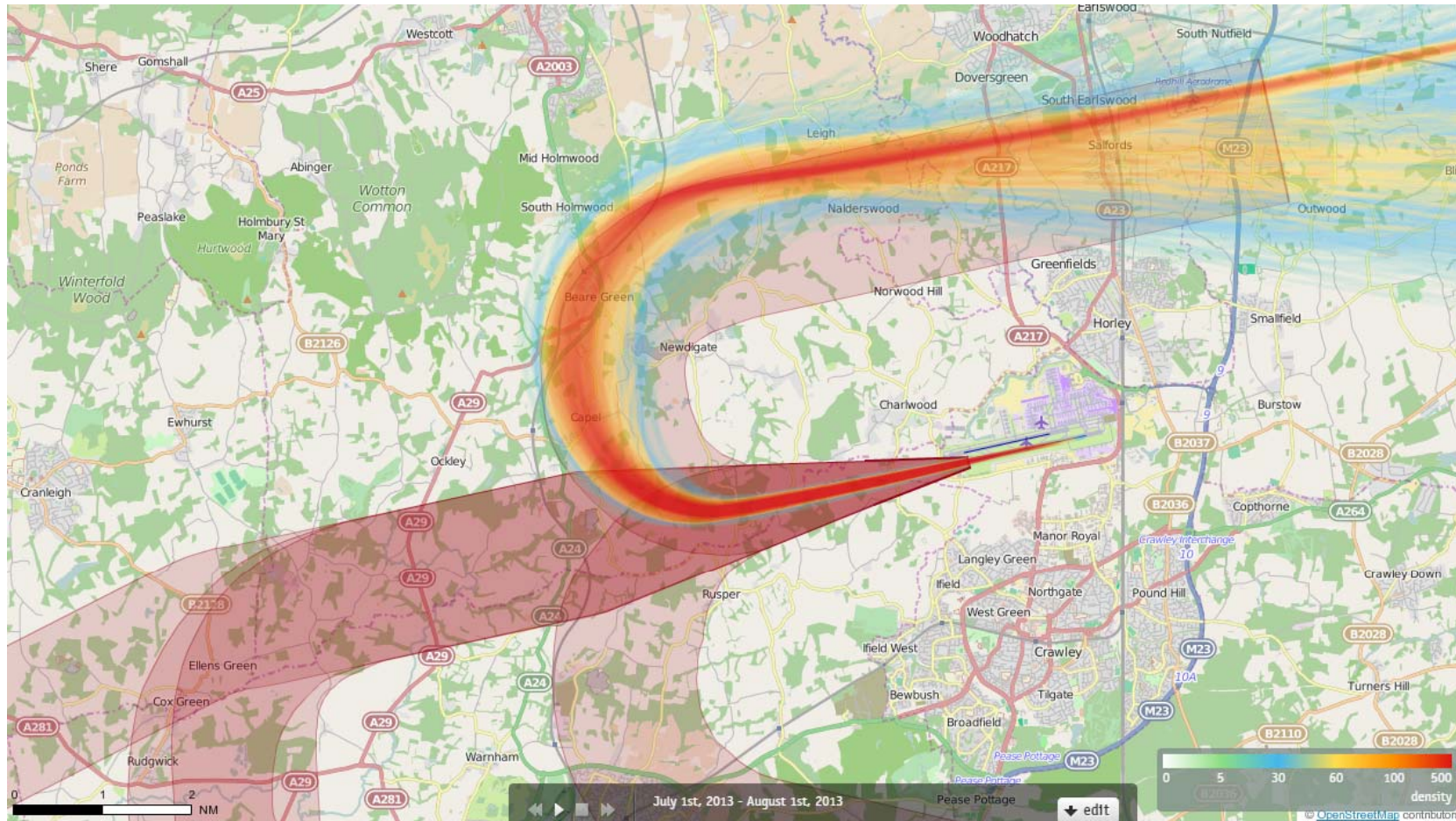


RNAV Trial (2008-2013)



26LAMBOURNE Density July 2013

2727 Aircraft – Showing CONVENTIONAL Departures Only



Track density

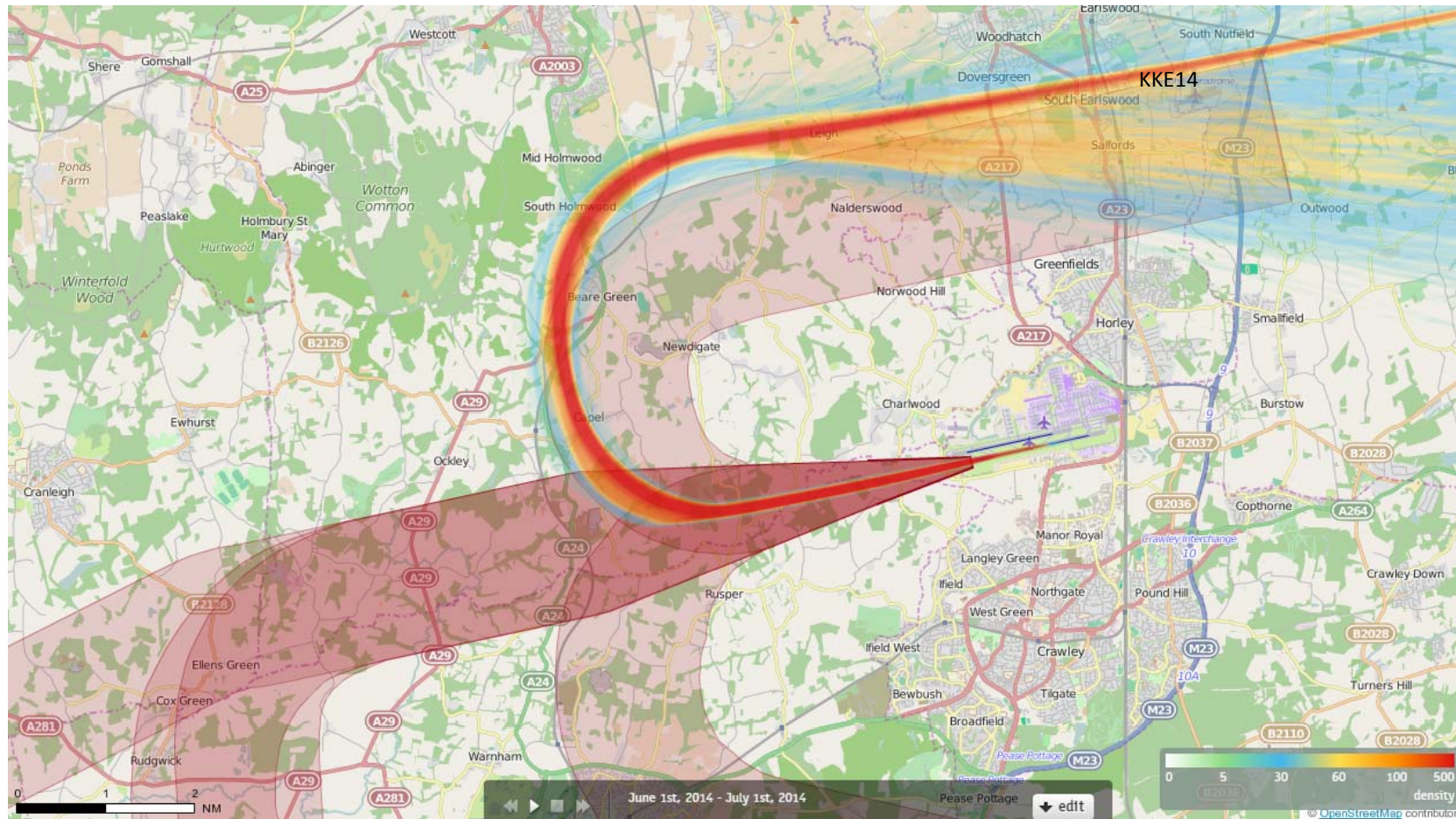
Each track is drawn as a line which has a width of just a few pixels and each pixel on the screen counts how often a 'track line' comes across this pixel when drawing all the tracks.

When all the tracks have been drawn, each pixel decides upon its colour based on the number of times a 'track line' has come across that pixel. The conversion from "count" to "colour" is guided by the numbers and colours given in the current Palette.

Counts in between are mapped to colours in between. If 100 were orange and 200 were red, then 150 would be coloured some orangy red.

26LAMBOURNE Density June 2014

2538 Aircraft – Showing P-RNAV Departures Only



Track density

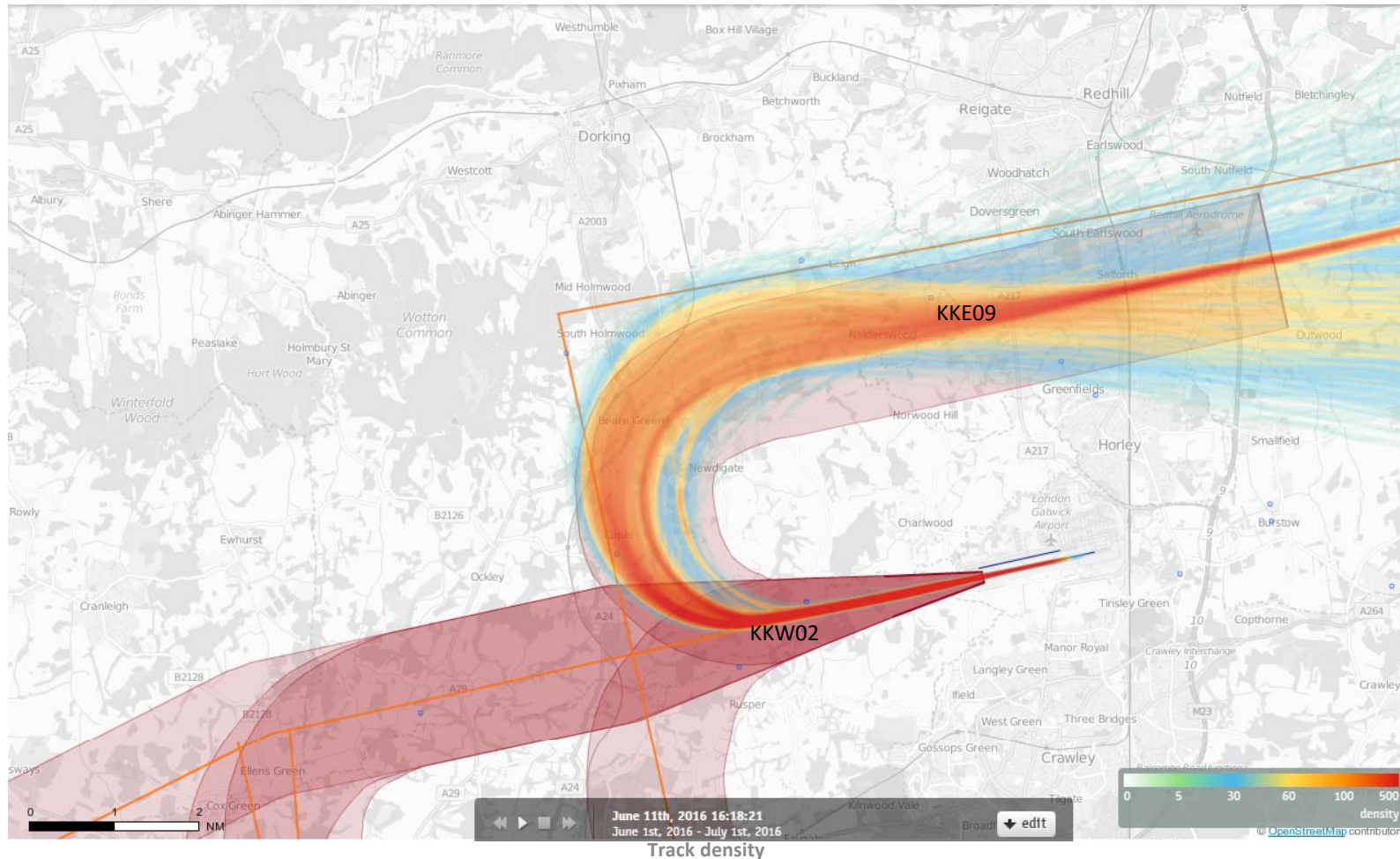
Each track is drawn as a line which has a width of just a few pixels and each pixel on the screen counts how often a 'track line' comes across this pixel when drawing all the tracks.

When all the tracks have been drawn, each pixel decides upon its colour based on the number of times a 'track line' has come across that pixel. The conversion from "count" to "colour" is guided by the numbers and colours given in the current Palette.

Counts in between are mapped to colours in between. If 100 were orange and 200 where red, then 150 would be coloured some orangy red.

26LAMBOURNE Density June 2016

2793 Aircraft – Showing P-RNAV Departures Only



Each track is drawn as a line which has a width of just a few pixels and each pixel on the screen counts how often a 'track line' comes across this pixel when drawing all the tracks.

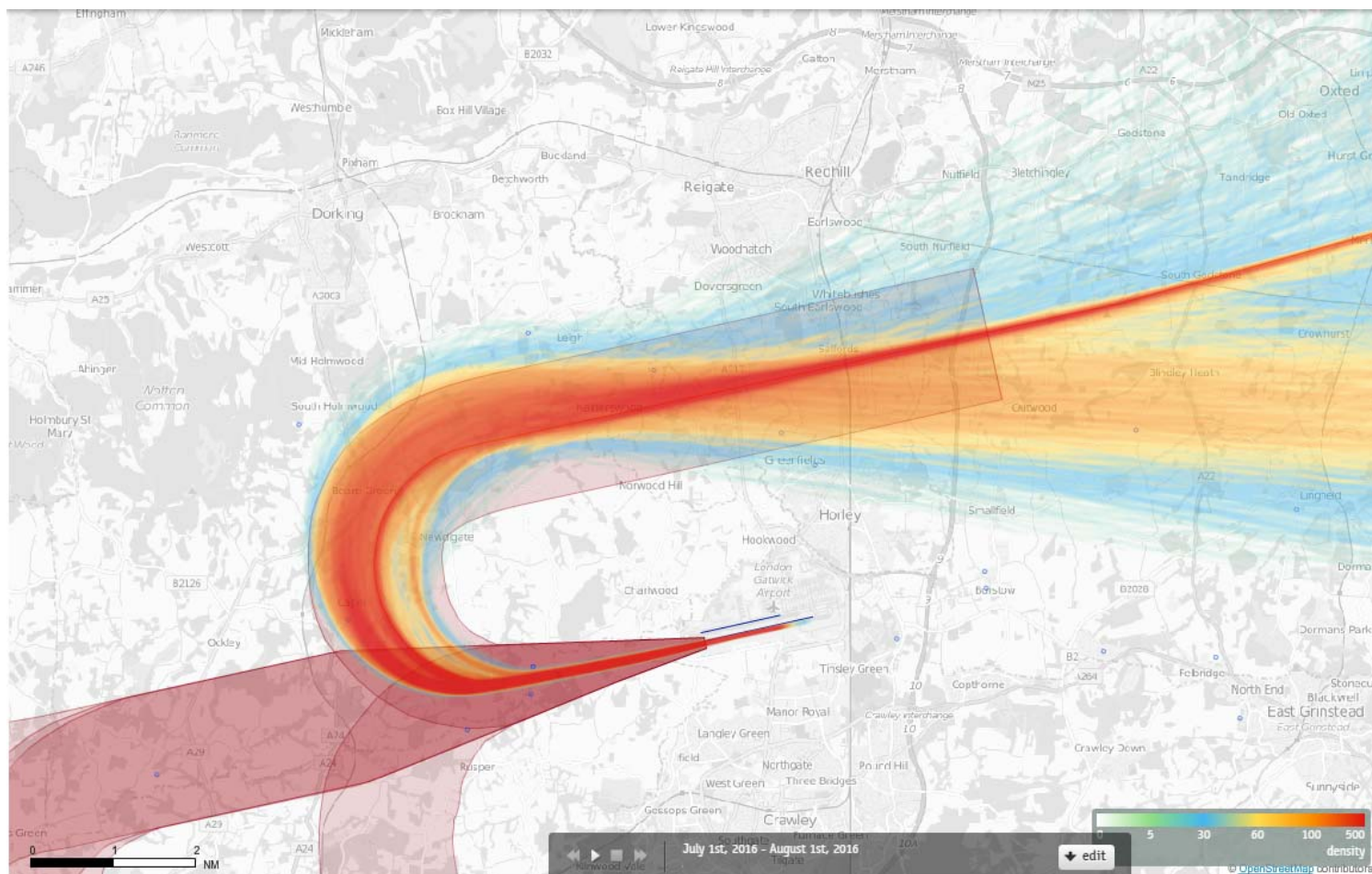
When all the tracks have been drawn, each pixel decides upon its colour based on the number of times a 'track line' has come across that pixel. The conversion from "count" to "colour" is guided by the numbers and colours given in the current Palette.

Counts in between are mapped to colours in between. If 100 were orange and 200 were red, then 150 would be coloured some orangy red.

The SID line shown on this map displays the previous P-RNAV SID design

26LAMBOURNE Density July 2016

4795 Aircraft – Showing RNAV1 Departures Only



Track density

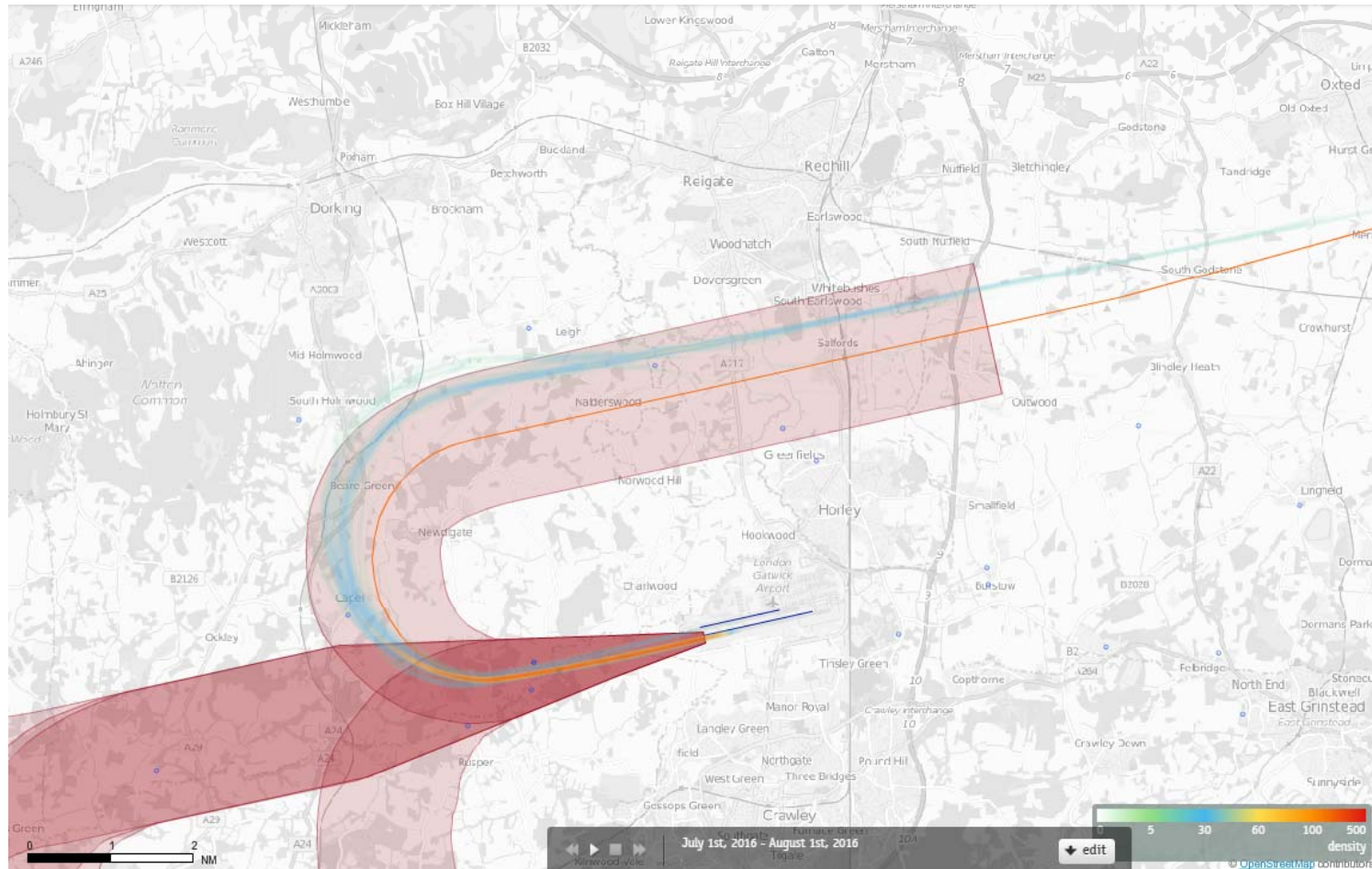
Each track is drawn as a line which has a width of just a few pixels and each pixel on the screen counts how often a 'track line' comes across this pixel when drawing all the tracks.

When all the tracks have been drawn, each pixel decides upon its colour based on the number of times a 'track line' has come across that pixel. The conversion from "count" to "colour" is guided by the numbers and colours given in the current Palette.

Counts in between are mapped to colours in between. If 100 were orange and 200 were red, then 150 would be coloured some orangy red.

26LAMBOURNE Density July 2016

173 Aircraft – Showing CONVENTIONAL Departures Only



Track density

Each track is drawn as a line which has a width of just a few pixels and each pixel on the screen counts how often a 'track line' comes across this pixel when drawing all the tracks.

When all the tracks have been drawn, each pixel decides upon its colour based on the number of times a 'track line' has come across that pixel. The conversion from "count" to "colour" is guided by the numbers and colours given in the current Palette.

Counts in between are mapped to colours in between. If 100 were orange and 200 where red, then 150 would be coloured some orangy red.