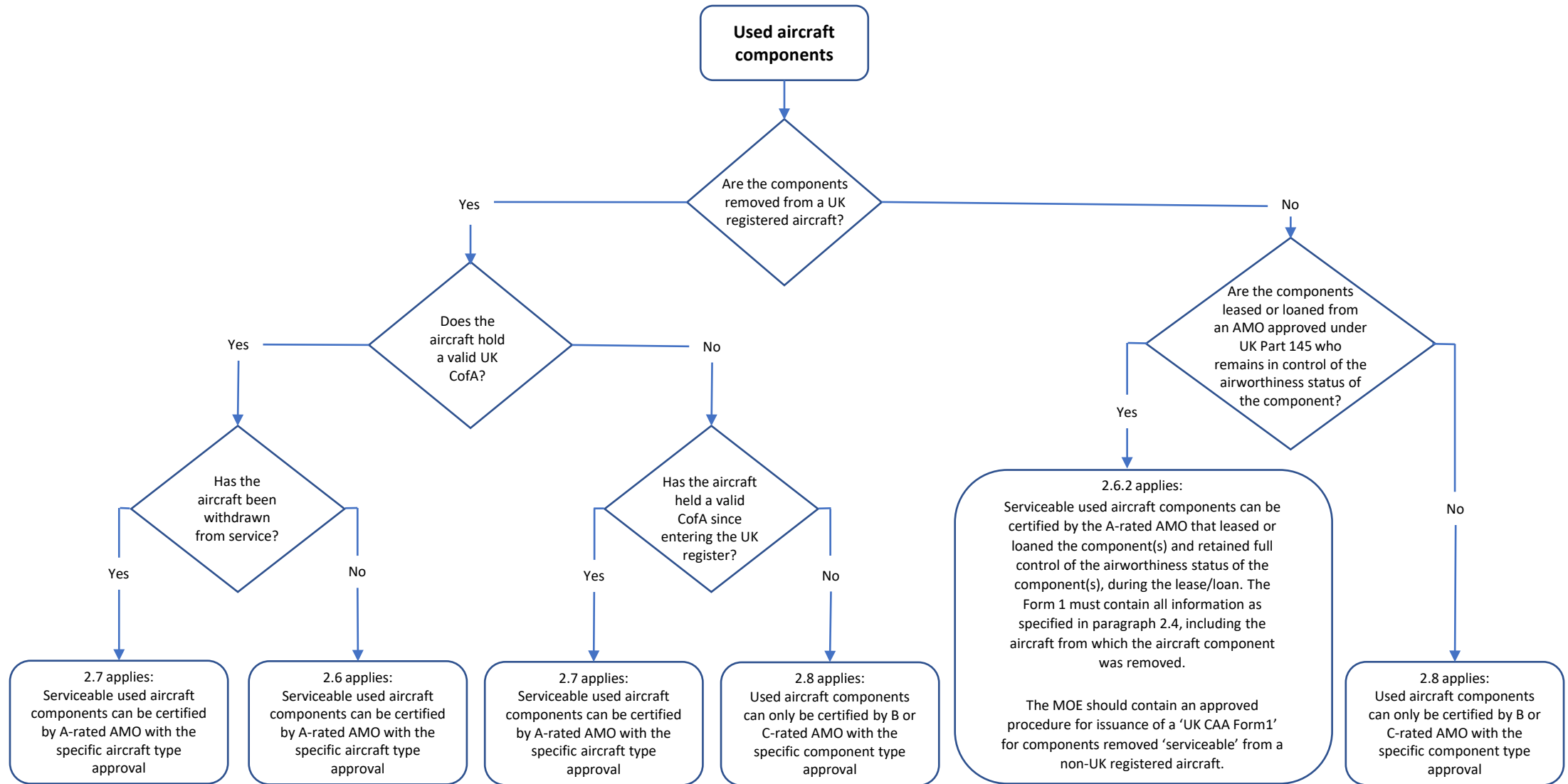


## Part 145 - Applicability of AMC2 145.A.50(d) and Certification of Used Aircraft Components



\* Paragraphs 2.6 and 2.7 of the AMC2 state 'aircraft components removed from a UK registered aircraft'; In this context this means an aircraft issued with an UK CofA as indicated in the decision box. A valid UK CofA confirms that the aircraft has entered UK system by means of conforming to its Type Design, as approved or validated by the UK CAA, and any changes thereto and has been maintained in accordance with a maintenance programme approved or accepted by the UK CAA.