
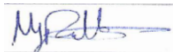


GLOBAL POSITIONING SYSTEM (GPS) PERFORMANCE

QUARTERLY REPORT 4 (OCTOBER TO DECEMBER
2022)

Prepared by: Lee Banfield


Approved by: M Pattinson


Authorized by: M Pattinson


Code: GMVNSL_CAA-GPS-SPS-Q4-22
Version: 1.0
Date: 13/01/23
Internal code: GMV 20140/23

DOCUMENT STATUS SHEET

Version	Date	Pages	Changes
1.0	13/01/2023	34	First version delivered to CAA

TABLE OF CONTENTS

1. INTRODUCTION	5
1.1. PURPOSE	5
1.2. DOCUMENT OVERVIEW	5
1.3. REFERENCES	5
1.3.1. Applicable Documents	5
1.3.2. Reference Documents.....	6
1.4. ACRONYMS	6
2. INTRODUCTION	7
2.1. PURPOSE	7
2.2. PERFORMANCE SPECIFICATION AND DEFINITIONS	7
2.3. METHODOLOGY	10
2.4. ASSUMPTIONS.....	13
3. SPS PERFORMANCE	14
3.1. BASELINE 24-SLOT CONSTELLATION.....	14
3.2. SPS SIS ACCURACY	14
3.3. SPS SIS INTEGRITY.....	17
3.4. SPS SIS CONTINUITY	17
3.5. SPS SIS AVAILABILITY.....	18
3.6. PDOP AVAILABILITY	18
3.7. POSITION SERVICE AVAILABILITY.....	20
3.8. POSITIONING ACCURACY.....	21
4. NANU ANALYSIS	24
5. CONCLUSIONS.....	27
ANNEX A. GEOMAGNETIC DATA.....	29
ANNEX B. ANALYSIS OF HIGH SIS ERRORS	31

LIST OF TABLES AND FIGURES

Table 1-1 Applicable Documents	5
Table 1-2 Reference Documents	6
Table 1-3 Acronyms	6
Table 2-1: SPS Criteria and Specifications.....	9
Table 3-1: Baseline constellation in the Period 1 October to 31 December 2022.....	14
Table 3-2: Range Error Statistics for Reporting Period	16
Table 4-1: Summary of Forecast Scheduled Outages.....	24
Table 4-2: Summary of Actual Scheduled Outages	25
Table 4-3: Summary of Cancelled Outages	25
Table 4-4: Summary of Forecast and Actual Unscheduled Outages.....	26
Table 4-5: Summary of NANU Statistics for Monitoring Period	26
Table 5-1: Summary of Performance.....	27
Figure 2-1: Location of EUREF Sites (http://www.epncb.oma.be/_networkdata/stationmaps.php).....	11
Figure 3-1: Constellation URE (95%) for Reporting Period.....	15
Figure 3-2: Constellation RMS URE for Reporting Period	15
Figure 3-3: Daily PDOP Availability in the Reporting Period	19
Figure 3-4: Daily Maximum PDOP Value in the Reporting Period	19
Figure 3-5: Daily Horizontal Service Availability Values for Reporting Period.....	20
Figure 3-6: Daily Vertical Service Availability Values for Reporting Period	21
Figure 3-7: Daily Horizontal Position Accuracy (95%) for Reporting Period	22
Figure 3-8: Daily Vertical Position Accuracy (95%) for Reporting Period.....	22
Figure 3-9: Daily Horizontal Position Accuracy (99.99%) for Reporting Period	23
Figure 3-10: Daily Vertical Position Accuracy (99.99%) for Reporting Period	23
Figure 5-1: K-Index Values at Lerwick during Reporting Period.....	29
Figure 5-2: K-Index Values at Eskdalemuir during Reporting Period	30
Figure 5-3: K-Index Values at Hartland during Reporting Period	30
Figure 5-4: Constellation URE (95%) for Reporting Period (left) and Period up until 4 th December (right)	31
Figure 5-5: Hourly Horizontal and Vertical Error Statistics for GPS L1 during December 2022	32
Figure 5-6: Hourly Horizontal and Vertical Error Statistics for GPS L1/L2 during December 2022	32

1. INTRODUCTION

1.1. PURPOSE

This document presents the results of the GPS SPS performance assessment for the period of October to December 2022. The objectives of the study are to compare the measured performance against US DoD SPS performance specification [RD.1], covering the following parameters [AD.1]:

- SPS SiS Accuracy,
- SPS SiS Integrity,
- SPS SiS Continuity,
- SPS SiS Availability,
- PDOP Availability,
- SPS Position Service Availability and
- SPS Position Service Accuracy.

It also includes NANU analysis and geomagnetic activity. The performance is analysed using a mix of raw data recorded at the GMV sites in Nottingham and at Harwell.

1.2. DOCUMENT OVERVIEW

This document is arranged in the following sections:

- **Section 1**, the current section, describes the purpose, scope and structure of the document and lists the reference documents.
- **Section 2** gives an introduction to the activity, including performance specification and assessment methodology and assumptions;
- **Section 3** contains an assessment of performance against GPS SPS performance standards;
- **Section 4** provides an analysis of the NANUs;
- **Section 5** contains the conclusions;
- **Annex A** provides the geomagnetic activity data.
- **Annex B** contains some analysis of reasons for high SIS accuracy measured values

1.3. REFERENCES

1.3.1. APPLICABLE DOCUMENTS

The following documents, of the exact issue shown, form part of this document to the extent specified herein. Applicable documents are those referenced in the Contract or approved by the Approval Authority. They are referenced in this document in the form [AD.x]:

Table 1-1 Applicable Documents

Ref.	Title	Code	Version	Date
[AD.1]	THE PROVISION OF MONITORING AND ANALYSIS OF GPS SIGNALS IN SPACE –	CONTRACT NO. 1762 (AMENDMENT NO. 10)	-	21/01/22
[AD.2]				

1.3.2. REFERENCE DOCUMENTS

The following documents, although not part of this document, amplify or clarify its contents. Reference documents are those not applicable and referenced within this document. They are referenced in this document in the form [RD.x]:

Table 1-2 Reference Documents

Ref.	Title	Code	Version	Date
[RD.1]	Global Positioning System Standard Positioning Service Performance Standard	GPS SPS	5 th Edition	Apr 2020
[RD.2]	Global Positioning System (GPS) Civil Monitoring Performance Specification	DOT-VNTSC-FAA-09-08	-	April 30 th 2009
[RD.3]	Reference Set of Parameters for RAIM Availability Simulations', EUROCAE WG-62	-	-	8-9 July 2003
[RD.4]	The International GNSS Service in a changing landscape of Global Navigation Satellite Systems	Journal of Geodesy 83: 191-198		2009

1.4. ACRONYMS

Acronyms used in this document and needing a definition are included in the following table:

Table 1-3 Acronyms

Acronym	Definition
AOD	Age Of Data
CAA	Civil Aviation Authority
GNSS	Global Navigation Satellite System
GPS	Global Positioning System
HDOP	Horizontal Dilution Of Precision
IGS	International GNSS Service
NANU	Notice Advisory to Navstar Users
NOTAM	Notice To Airmen
PDOP	Position Dilution Of Precision
RAIM	Receiver Autonomous Integrity Monitoring
SIS	Signal In Space
SPS	Standard Positioning Service
TTA	Time To Alarm
UERE	User Equivalent Range Error
URA	User Range Accuracy
URE	User Range Error
VDOP	Vertical Dilution Of Precision

2. INTRODUCTION

2.1. PURPOSE

The purpose of the performance monitoring activity is to collect and analyse data on the performance of the GPS Signal in Space (SIS) [AD.1]. For this report, the applicable requirements are defined in the Global Positioning System Standard Positioning Service Performance Standard (GPS SPS PS), approved by the US Department of Defence [RD.1].

2.2. PERFORMANCE SPECIFICATION AND DEFINITIONS

The applicable performance specifications for the Standard Positioning Service [RD. 1] are as follows, with changes to the previous version of the GPS performance spec (prior to April 2020) noted:

Criteria	Specifications
SPS SIS Accuracy	<p>The User Range Error (URE) for any healthy satellite for Single-Frequency C/A-Code:</p> <ul style="list-style-type: none"> ≤7.0 m 95% Global Average URE during Normal Operations over all age of data (AODs) [previous value was 7.8m] ≤3.8m 95% Global Average URE during Normal Operations at Zero AOD [previous value was 6.0m] ≤9.7 m 95% Global Average URE during Normal Operations at Any AOD [previous value was 12.8m] ≤30 m 99.94% Global Average URE during Normal Operations over one-year period ≤30 m 99.79% Worst Case Single Point Average URE during Normal Operations over one-year period ≤388 m 95% Global Average URE during Extended Operations after 14 Days without Upload. <p>The User Range Error (URE) for all healthy satellites for Single-Frequency C/A-Code:</p> <ul style="list-style-type: none"> ≤2.0 m 95% Global Average URE during Normal Operations over all age of data (AODs) [New specification – did not appear previously] <p>The User Range Rate Error (URRE) for Single-Frequency C/A-Code:</p> <p>≤0.006 m/sec 95% Global Average URRE over any 3-second interval during Normal Operations at Any AOD</p> <p>The User Range Acceleration Error (URAE) for Single-Frequency C/A-Code:</p> <p>≤0.002 m/sec/sec 95% Global Average URAE over any 3-second interval during Normal Operations at Any AOD</p> <p>The UTC Offset Error for Single-Frequency C/A-Code:</p> <p>≤30 nsec 95% Global Average UTCOE during Normal Operations at Any AOD [previous value was 40nsec]</p>
SPS SIS Integrity	<p>The SIS Instantaneous URE Integrity for Single-Frequency C/A-Code:</p>

Criteria	Specifications
	<ul style="list-style-type: none"> • $\leq 1 \times 10^{-5}$ Probability Over Any Hour of the SPS SIS Instantaneous URE Exceeding the NTE Tolerance Without a Timely Alert during Normal Operations <p>The SIS Instantaneous UTCOE Integrity for Single-Frequency C/A-Code:</p> <ul style="list-style-type: none"> • $\leq 1 \times 10^{-5}$ Probability Over Any Hour of the SPS SIS Instantaneous UTCOE Exceeding the NTE Tolerance Without a Timely Alert during Normal Operations <p>The SIS Instantaneous Psat and Pconst for Single-Frequency C/A-Code:</p> <ul style="list-style-type: none"> • $\leq 1 \times 10^{-5}$ Fraction of Time when the SPS SIS Instantaneous URE Exceeds the NTE Tolerance Without a Timely Alert (Psat) [New specification – did not appear previously] • $\leq 1 \times 10^{-8}$ Fraction of Time when the SPS SIS Instantaneous URE from two or more satellites Exceeds the NTE Tolerance due to a common cause Without a Timely Alert (Pconst) [New specification – did not appear previously]
SPS SIS Continuity	<p>SPS SIS Unscheduled Failure Interruption Continuity</p> <ul style="list-style-type: none"> • ≥ 0.9998 Probability Over Any Hour of Not Losing the SPS SIS Availability from a Slot Due to Unscheduled Interruption • Given that the SPS SIS is available from the slot at the start of the hour
Status and Problem reporting	<p>Scheduled Event Affecting Service</p> <ul style="list-style-type: none"> • Appropriate NANU issued to the Coast Guard and the FAA at least 48 hours prior to the event for 95% of the events [previously did not specify a %]
SPS SIS Availability	<p>SPS SIS Per-Slot Availability</p> <ul style="list-style-type: none"> • ≥ 0.957 Probability that a Slot in the Baseline 24-Slot Configuration will be Occupied by a Satellite Broadcasting a Healthy SPS SIS • ≥ 0.957 Probability that a Slot in the Expanded Configuration will be Occupied by a Pair of Satellites Each Broadcasting a Healthy SPS SIS <p>SPS SIS Constellation Availability</p> <ul style="list-style-type: none"> • ≥ 0.98 Probability that at least 21 Slots out of the 24 Slots will be Occupied Either by a Satellite Broadcasting a Healthy SPS SIS in the Baseline 24-Slot Configuration or by a Pair of Satellites Each Broadcasting a Healthy SPS SIS in the Expanded Slot Configuration • ≥ 0.99999 Probability that at least 20 Slots out of the 24 Slots will be occupied either by a Satellite Broadcasting a Healthy SPS SIS in the Baseline 24-Slot Configuration or by a Pair of Satellites Each Broadcasting a Healthy SPS SIS in the Expanded Slot Configuration. • ≥ 0.95 Probability that the Constellation will have at least 24 Operational Satellites regardless of Whether Those Operational Satellites are Located in Slots or Not.
PDOP Availability	<ul style="list-style-type: none"> • $\geq 98\%$ global Position Dilution of Precision (PDOP) of 6 or less • $\geq 88\%$ worst site PDOP of 6 or less
SPS Position Service Availability	<ul style="list-style-type: none"> • $\geq 99\%$ Horizontal Service Availability average location • $\geq 90\%$ Horizontal Service Availability worst-case location

Criteria	Specifications
	<ul style="list-style-type: none"> • $\geq 99\%$ Vertical Service Availability average location • $\geq 90\%$ Vertical Service Availability worst-case location <p>With 15 m horizontal and 33 m vertical (SIS only) 95% threshold over 24hours <i>[previous values were 17m and 37m]</i></p>
Positioning Accuracy	<ul style="list-style-type: none"> • ≤ 8 meters 95% Global Average Horizontal Error <i>[previous value was 9m]</i> • ≤ 15 meters 95% worst site Horizontal Error <i>[previous value was 17m]</i> • ≤ 13 meters 95% Global Average Vertical Error <i>[previous value was 15m]</i> • ≤ 33 meters 95% worst site Vertical Error <i>[previous value was 37m]</i> • Global Average Velocity Accuracy • ≤ 0.2 m/sec 95% velocity error, any axis <i>[New specification – did not appear previously]</i> • ≤ 30 nanoseconds time transfer error 95% of time for Time Transfer Domain Accuracy <i>[previous value was 40nsec]</i>

Table 2-1: SPS Criteria and Specifications

The definitions for each of the criteria and the methodology used for assessment are given below. As well as the GPS SPS [RD.1], the GPS civil monitoring performance specification [RD.2] has also been used to help define the methodology for the assessment.

SPS SIS Accuracy

The SPS SIS accuracy is described in two statistical ways; one way is as the 95th percentile (95%) SPS SIS user range error (URE) at a specified age of data (AOD), the other is as the 95% SPS SIS URE over all AODs. With either statistical expression, the SPS SIS accuracy is also known as the SPS SIS pseudorange accuracy. In this context, "pseudorange" means the full pseudorange data set (i.e., the matched combination of a corrected pseudorange measurement and a pseudorange origin, or equivalently the matched combination of a raw pseudorange measurement and the associated NAV data).

Other accuracy-related SPS SIS performance parameters include the SPS SIS pseudorange rate (velocity) accuracy defined as the 95% SPS SIS pseudorange rate error over all AODs and the SPS SIS pseudorange acceleration (rate rate) accuracy defined as the 95% SPS SIS pseudorange acceleration error over all AODs. These values are not monitored as part of this performance monitoring contract.

SPS SIS Integrity

The SPS SIS integrity is defined as the trust which can be placed in the correctness of the information provided by the SPS SIS. SPS SIS integrity includes the ability of the SPS SIS to provide timely alerts to receivers when the SPS SIS should not be used for positioning or timing. The SPS SIS should not be used when it is providing misleading signal-in-space information (MSI), where the threshold for "misleading" is a not-to-exceed (NTE) tolerance on the SIS URE. For this SPS PS, the four components of integrity are the probability of a major service failure, the time to alert, the SIS URE NTE tolerance, and the alert (either one or the other of two types of alerts).

- Probability of a Major Service Failure. The probability of a major service failure for the SPS SIS is defined to be the probability that the SPS SIS instantaneous URE exceeds the SIS URE NTE tolerance (i.e., MSI) without a timely alert being issued (i.e., unalerted MSI [UMSI]). Alerts generically include both alarms and warnings.

- Time to Alert. The time to alert (TTA) for the SPS SIS is defined to be the time from the onset of MSI until an alert (alarm or warning) indication arrives at the receiver's antenna. Real-time alert information broadcast as part of the NAV message data is defined to arrive at the receiver's antenna at the end of the NAV message subframe which contains that particular piece of real-time alert information.
- SIS URE NTE Tolerance. The SPS SIS URE NTE tolerance for a healthy SPS SIS is defined to be 4.42 times the upper bound on the URA value corresponding to the URA index "N" currently broadcast by the satellite. The SIS URE NTE tolerance for a marginal SPS SIS is not defined and there is no SIS URE NTE tolerance for an unhealthy SPS SIS.

SPS SIS Continuity

The SPS SIS continuity for a healthy SPS SIS is the probability that the SPS SIS will continue to be healthy without unscheduled interruption over a specified time interval. Scheduled interruptions which are announced at least 48 hours in advance do not contribute to a loss of continuity. Scheduled SPS SIS interruptions are announced by way of the Control Segment issuing a "Notice Advisory to Navstar Users" (NANU). NANUs are similar to the "Notices to Airmen" (NOTAMs) issued regarding scheduled interruptions of ground-based air navigation aids. OCS internal procedures are to issue NANUs for scheduled interruptions at least 96 hours in advance.

SPS SIS Availability

The SPS SIS availability is the probability that the slots in the GPS constellation will be occupied by satellites transmitting a trackable and healthy SPS SIS. For this SPS Performance Standard, there are two components of availability as follows:

- Per-Slot Availability. The fraction of time that a slot in the GPS constellation will be occupied by a satellite that is transmitting a trackable and healthy SPS SIS.
- Constellation Availability. The fraction of time that a specified number of slots in the GPS constellation

PDOP Availability

PDOP availability is defined as the percentage of time over a specified time interval that the predicted PDOP is less than a specified value for any point within the service volume [RD.1].

Position Service Availability

Position service availability is defined as the percentage of time over a specified time interval that the position accuracy is less than a specified value for any point within the service volume [RD.1].

Positioning Service Accuracy

Position service accuracy is defined as the statistical difference between position measurements and a surveyed benchmark for any point within the service volume over a specified time interval [RD.1].

2.3. METHODOLOGY

For the performance analysis in this report, raw GPS measurement data from reference stations has been analysed. The primary source of data is the EUREF permanent GPS network (as shown in the next figure).



Figure 2-1: Location of EUREF Sites
 (<http://www.epncb.oma.be/networkdata/stationmaps.php>)

The EUREF receivers provide high rate (1Hz), multi-constellation, multi-frequency GNSS measurements. The data files are accessed via ftp and can be downloaded at GMV NSL before processing with GISMO SW. The daily navigation message files are also downloaded from the IGS ftp site and used to provide the navigation data [RD.4].

In this quarter, maintenance of the BKG archive that provides access to the data has meant that the data access is patchy and therefore alternative data from CORS receivers at the GMV Nottingham and Harwell sites has been used. The periods are:

- HARW (Harwell): 24th to 28th November 2022 (when Nottingham site had an outage due to equipment move)
- NSLK (Nottingham): All other dates

The methods for assessing of each of the requirements are described below.

SPS SIS Accuracy

SIS accuracy is assessed through processing and analysis of the raw measurement data. In order to compute the SIS accuracy, the measurements recorded at the GPS receiver are used to compute the instantaneous SIS errors. This is done by computing the difference between computed ranges (based on known receiver location and satellite position) and the corrected measurement, which has satellite and receiver clock biases, group delay, ionospheric and tropospheric errors removed. Once the SIS range errors for every satellite measurement on every epoch have been computed, the per-satellite and all satellite statistics across the whole period, as well as daily statistics for all satellites combined, are generated.

SPS SIS Integrity

SIS accuracy is assessed through processing and analysis of the raw measurement data. The SIS integrity is assessed by comparing each instantaneous computed SIS error value with a threshold value of 4.42 x broadcast URA. The number of occasions where the instantaneous URE exceeds the threshold are counted and checked against the expected number of failures.

SPS SIS Continuity

SIS continuity is assessed through analysis of the broadcast navigation messages and the NANU archive. Firstly, the daily broadcast navigation messages are scanned in order to find the time periods for any satellites that do not have healthy navigation messages. These satellites and time periods are then matched against NANU information to see if the outages are scheduled or unscheduled.

The SIS continuity is computed for the baseline 24-slot constellation and is an average value over all slots. The total time that any satellites in the baseline constellation were unhealthy due to an unscheduled outage is divided by the total time in the analysis period and expressed as a percentage. Results are presented for the reporting period and, when available, for the previous year.

SPS SIS Availability

SIS availability is assessed through analysis of the broadcast navigation messages and the NANU archive. Firstly, the daily broadcast navigation messages are scanned in order to find the time periods for any satellites that do not have healthy navigation messages. These satellites and time periods are then matched against NANU information to see if the outages are scheduled or unscheduled.

The SIS availability is computed for the baseline 24-slot constellation as well as for the whole constellation and is an average value over all slots. At each epoch the number of healthy satellites (both in the baseline 24-slot constellation and in total) is counted. Then the following parameters are computed:

- Total time that there are less than 21 healthy satellites in the baseline constellation;
- Total time that there are less than 20 healthy satellites in the baseline constellation;
- Total time that there are less than 24 healthy satellites in the whole constellation.

These parameters are then divided by total time of the analysis and expressed as percentage values. Results are presented for the reporting period and, when available, for the previous year.

It should be noted that in case the baseline 24-slot constellation does not meet requirements, the analysis will be expanded to include pairs of satellites in the expanded slot constellation.

PDOP Availability

PDOP availability is assessed through processing and analysis of the raw measurement data. The PDOP availability is assessed by computing the PDOP for all satellites in view above 5 degrees at the GPS receiver at every epoch (1Hz rate). Each PDOP value is checked against the threshold value of 6 and any failures are counted. The numbers of failures on each day are then used to generate the daily availability value. A separate availability value for each day is computed.

Position Service Availability

Position service availability is assessed through processing and analysis of the raw measurement data. The derivation of the position service availability requirements of 15m (95% horizontal accuracy) and 33m (95% vertical accuracy) for 99% of the time are explained a bit more in section B.3.2 of the GPS SPS [RD.1]. The requirement is based on fulfilling a 1-sigma UERE of 3.6m, HDOP of 2.1 and VDOP of 4.53. To check this requirement, the following approach is used:

- For each day, compute daily rms SIS error for all satellites combined. This is equivalent to the 1-sigma UERE in the description above;
- On each epoch, multiply daily rms SIS error by HDOP value to compute estimated horizontal accuracy due to SIS error;
- For each epoch, multiply daily rms SIS error by VDOP value to compute estimated vertical accuracy due to SIS error;
- Compute daily availability (%) of estimated horizontal accuracy < 7.5m (1-sigma);

- Compute daily availability (%) of estimated vertical accuracy < 16.5m (1-sigma).
- If daily availability of horizontal accuracy greater than the required threshold, the requirement for horizontal service accuracy is passed;
- If daily availability of vertical accuracy greater than the required threshold, the requirement for vertical service accuracy is passed.

Positioning Service Accuracy

In order to check the position service accuracy, the raw measurements recorded at the GPS receiver are used to compute a user position solution on every epoch (1Hz). The computed positions are then compared against the known position of the receiver in order to generate horizontal and vertical position errors. Statistics for 95% error value, 99.99% error value etc. are then computed separately for each day and checked against the thresholds.

2.4. ASSUMPTIONS

For processing the raw data and generating the results the following assumptions are made:

- Single frequency (L1) processing with C/A code;
- 5-degree elevation mask used;
- Broadcast iono model (Klobuchar) used to remove ionospheric errors;
- RTCA trop model used to remove tropospheric errors;
- Weighted least squares RAIM algorithm used for RAIM prediction (protection level computation) and Fault Detection;
- Probability of missed detection = 0.001 and Probability of false alarm = 1×10^{-5} for RAIM computations;
- UERE budget (non-SIS components) used in position solution and for RAIM predictions based given below [RD.3]:

Elevation, degrees	Error, metres
5	7.48
10	6.64
15	5.92
20	5.31
30	4.31
40	3.57
50	3.06
60	2.73
90	2.44

- The URA value from the broadcast navigation message is combined with the values in the table to form the total UERE for the observations.

As the actual monitoring is based on the measurements from one receiver, the following points should be noted:

- Performance monitoring is local to the monitoring station with a coverage area defined by the correlation of the major error sources and the configuration of the constellation.
- The range domain errors contain the residuals of other error sources other than the SIS range errors, hence the performance statistics generated are conservative.

3. SPS PERFORMANCE

3.1. BASELINE 24-SLOT CONSTELLATION

The SPS SIS performance standard is largely based on the GPS baseline 24-slot constellation, which consists of 24 slots in six orbital planes with four slots per plane. Some of these slots are expanded, whereby two satellites occupy fore and aft positions at that slot, in which case the slot is occupied as long as at least one of the expanded slots is occupied by an operational satellite. It is important to identify the baseline constellation (and expanded slots) to act as reference to subsequent data processing and analysis. The following tables show the satellite PRN in each slot for the baseline constellation for the period October to December 2022¹.

Table 3-1: Baseline constellation in the Period 1 October to 31 December 2022

Slot	A1	A2	A3	A4	B1A/B1F	B2	B3	B4	C1	C2	C3	C4A/C4F
PRN	24	31	30	7	16/26	25	14	12	29	27	8	19/17
Slot	D1	D2A/D2F	D3	D4	E1	E2	E3A/E3F	E4	F1	F2A/F2F	F3	F4
PRN	11	1/21	18	6	3	10	5/20	23	32	15/13	9	4

Note that in the latest version of the GPS SPS performance spec [RD.1] there are additional expandable slots defined for A2 but these are not currently used.

3.2. SPS SIS ACCURACY

In addition to the specifications in Table 2-1, the Conditions and Constraints for SPS SIS URE Accuracy specification [RD.1] are:

- For any healthy SPS SIS
- Neglecting single-frequency ionospheric delay model errors
- Including group delay time correction (TGD) errors at L1
- Including inter-signal bias (P(Y)-code to C/A-code) errors at L1

The statistics presented here are based on the same sample rate for positioning (1Hz). It should be noted that the computed range errors (in addition to SIS errors) contain residual errors local to the monitoring antenna (multipath, tropospheric and ionospheric). The URE Accuracy (95th percentile) values of each satellite for the period October to December 2022 are shown in the next figure.

¹ The information on slots is taken from the figure at <https://www.navcen.uscg.gov/pdf/gps/current.pdf>. It is noted that there is some inconsistency between this figure and the slot numbers in the ops advisory messages. The figure was last updated on 1st June 2022 and before that on 1st Feb 2022.

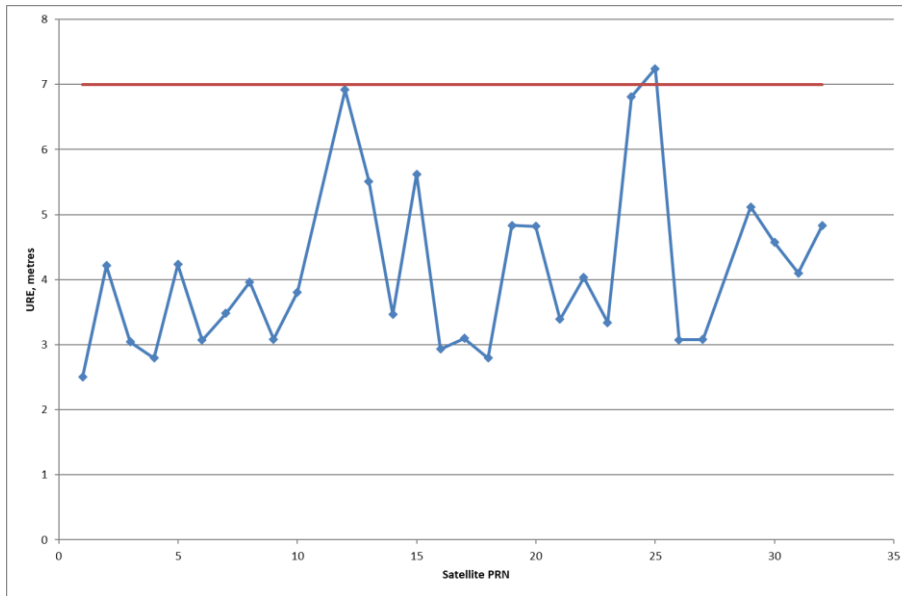


Figure 3-1: Constellation URE (95%) for Reporting Period

It can be seen that the URE (95%) for most satellites is below the 7m threshold but there are two very close to the limit and one that exceeds the threshold. This could indicate a failure against this requirement. However, further analysis (as shown in Annex B) suggests these apparently high errors are most likely due to larger than usual residual ionospheric errors and therefore should not be counted as a failure because the requirement of 7m is for signal in space errors only and not atmospheric effects.

The daily constellation RMS URE results in the period October to December 2022 and the 3.6m threshold are shown in the next figure. Note that $\leq 7\text{ m}$ 95% SPS SIS URE performance standard is equivalent to a $\leq 3.6\text{ m}$ RMS SPS SIS URE performance standard [RD.1]. This is also important for the position service availability assessment.

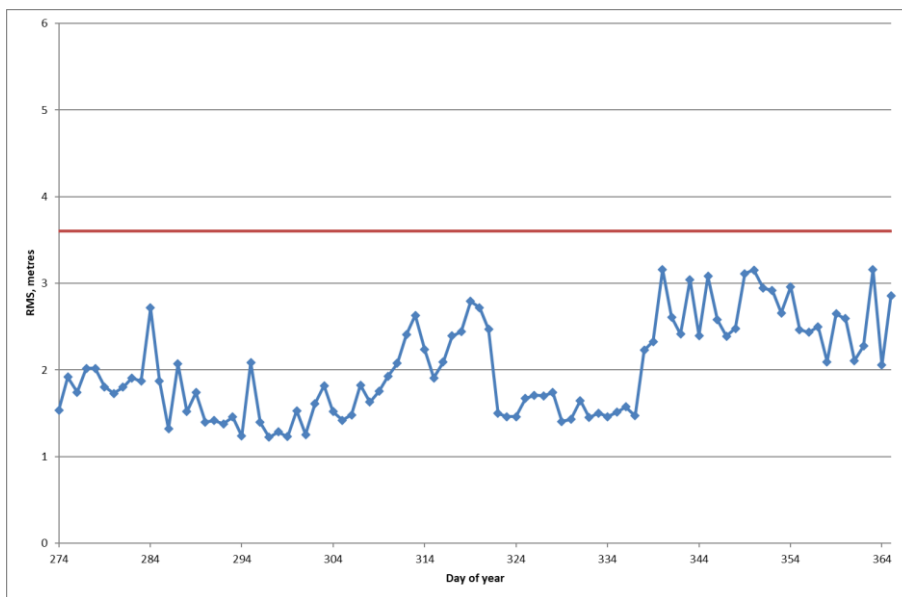


Figure 3-2: Constellation RMS URE for Reporting Period

It can be seen that the RMS values are below the threshold (3.6 metres) on all days, although they are higher than usual towards the end of the period (as discussed further in Annex B).

As well as the 95% and rms URE statistics, additional URE statistics are computed, including mean, 1-sigma and maximum values. Although not strictly required for the performance specification, these values can be useful for anomaly investigation. The range error statistics (in metres) for the period October to December 2022 are given in the table below.

Table 3-2: Range Error Statistics for Reporting Period

PRN	Range Error (mean)	Range Error (RMS)	1-sigma	Range Error (95%)	Range Error (max)	Number of Samples
1	0.44	1.41	1.34	2.50	11.74	2363261
2	1.61	2.22	1.54	4.22	8.10	2931703
3	0.29	1.53	1.50	3.04	9.21	2397532
4	-0.29	1.40	1.37	2.79	6.91	2697787
5	0.89	2.09	1.89	4.23	16.64	2736458
6	0.17	1.62	1.61	3.07	11.46	2779309
7	0.25	1.70	1.68	3.48	12.95	2817014
8	0.60	2.02	1.93	3.97	13.36	2536715
9	0.21	1.59	1.58	3.08	12.94	2469931
10	1.37	1.96	1.41	3.81	10.55	2867365
11	0.38	1.70	1.66	3.27	12.57	2845599
12	2.04	3.31	2.61	6.92	10.40	2429594
13	1.63	2.76	2.23	5.51	9.23	2280416
14	0.21	1.64	1.63	3.46	6.95	2833901
15	1.44	2.72	2.31	5.62	9.60	2451487
16	0.77	1.63	1.44	2.94	7.87	2670149
17	0.56	1.54	1.44	3.10	7.55	2875347
18	0.70	1.42	1.24	2.80	8.23	2792296
19	1.42	2.23	1.71	4.84	8.29	2839866
20	1.27	2.40	2.04	4.82	10.46	2678311
21	1.98	2.19	0.93	3.39	7.19	2218592
22	1.06	1.88	1.55	4.03	8.49	2921656
23	0.65	1.51	1.36	3.34	6.57	2855314
24	2.60	3.43	2.23	6.81	9.78	2099588
25	2.58	3.43	2.26	7.24	10.16	2133760
26	0.82	1.64	1.41	3.08	5.79	2515392
27	1.23	1.82	1.34	3.08	11.24	2323939
29	1.33	2.40	2.00	5.12	12.23	2650442
30	0.98	2.29	2.08	4.57	14.94	2624326
31	0.90	1.95	1.73	4.10	18.01	2699233
32	1.17	2.10	1.75	4.83	9.16	2870004

PRN	Range Error (mean)	Range Error (RMS)	1-sigma	Range Error (95%)	Range Error (max)	Number of Samples
Total	0.89	1.87	1.64	4.30	18.01	81206287

Overall, the measured SIS accuracy for any satellite is below the threshold values throughout the monitoring period for most satellites – reasons for higher values are discussed in Annex B.

The measured accuracy for all satellites combined is well above the threshold of 2m, which again is discussed further in Annex B but is likely due to higher than usual ionospheric residual errors affecting the analysis.

3.3. SPS SIS INTEGRITY

In addition to the specifications in Table 2-1, the Conditions and Constraints for SPS SIS Integrity performance [RD.1] are:

- For any healthy SPS SIS;
- SPS SIS URE NTE tolerance defined to be ± 4.42 times the upper bound on the URA value corresponding to the URA index "N" currently broadcast by the satellite;
- Given that the maximum SPS SIS instantaneous URE did not exceed the NTE tolerance at the start of the hour;
- Worst case for delayed alert is 6 hours;
- Neglecting single-frequency ionospheric delay model errors.

Based on the requirement of 1×10^{-5} /hr probability for misleading information, 92-day period and a 31-satellite constellation, the maximum number of events expected is 0.66.

On every epoch throughout the monitoring period, the instantaneous measured URE for each satellite has been compared against a threshold of 4.42 times the upper value of the URA index. The number of URE values above the threshold has been recorded and is checked against the expected number.

From the analysis there are 25 days where this condition is met. However, looking at these in detail the high values appear to be for low elevation satellites in particular directions and many events show some repeatability across days. Therefore these are very likely multipath errors rather than SIS errors and are discounted. Without those particular events there are no other issues and therefore the SIS integrity requirement is passed in this period.

3.4. SPS SIS CONTINUITY

In addition to the specifications in Table 2-1, the Conditions and Constraints for SPS SIS Continuity performance [RD.1] are:

- Calculated as an average over all slots in the 24-slot constellation, normalized annually;
- Given that the SPS SIS is available from the slot at the start of the hour.

During this reporting period there was one unscheduled event affecting the baseline constellation, lasting for a total of 1.82 hours. Therefore this gives a continuity figure of 99.996% in this period, which does meet the requirement of 99.98% in this period.

For the previous rolling year, there have been 6 unscheduled outages on the baseline constellation lasting for 240.78 hrs in total. This gives a continuity value for the year of 99.885%, which does not meet the performance standard.

3.5. SPS SIS AVAILABILITY

In addition to the specifications in Table 2-1, the Conditions and Constraints for SPS SIS Availability performance [RD.1] are:

- Calculated as an average over all slots in the 24-slot constellation, normalized annually;
- Applies to satellites broadcasting a healthy SPS SIS which also satisfy the other performance standards in this SPS Performance Standard.

The total period (in this monitoring period) in which satellites from the baseline 24-satellite constellation broadcast an unhealthy SIS was 129.75 hours. This is equivalent to an average of 0.99755 over all slots in the 24-slot constellation and satisfies SPS SIS Per-slot Availability standard (≥ 0.957).

The minimum number of the baseline constellation satellites broadcasting healthy SPS SIS was 22, greater than the specifications of 20 and 21. Hence, performance during the monitoring period was measured at the 100% level, satisfying the Performance Standard as specified below.

- ≥ 0.98 Probability that at least 21 Slots out of the 24 Slots will be Occupied Either by a Satellite Broadcasting a Healthy SPS SIS in the Baseline 24-Slot Configuration or by a Pair of Satellites Each Broadcasting a Healthy SPS SIS in the Expanded Slot Configuration;
- ≥ 0.99999 Probability that at least 20 Slots out of the 24 Slots will be occupied either by a Satellite Broadcasting a Healthy SPS SIS in the Baseline 24-Slot Configuration or by a Pair of Satellites Each Broadcasting a Healthy SPS SIS in the Expanded Slot Configuration.

The minimum number of operational satellites broadcasting healthy messages in this reporting period was 29. This represents performance at the 100% level, satisfying the Performance Standard as specified below.

- ≥ 0.95 Probability that the Constellation has at least 24 operational satellites regardless of whether the operational satellites are located in the baseline slots.

For the previous rolling year, the total period in which satellites from the baseline 24-satellite constellation did not broadcast a healthy SIS was 615.52 hours. This is equivalent to an average of 0.99707 over all slots in the 24-slot constellation and satisfies SPS SIS Per-slot Availability (≥ 0.957).

The minimum number of the baseline constellation satellites broadcasting healthy SPS SIS was 22, greater than the specifications of 20 and 21, and the minimum number of operational satellites broadcasting healthy messages was 28. This means that all constellation availability requirements from the Performance Standard are met for the previous year.

3.6. PDOP AVAILABILITY

In addition to the specifications in Table 2-1, the Conditions and Constraints for PDOP performance [RD.1] are:

- Defined for position solution meeting the representative user conditions and operating within the service volume over any 24-hour interval;
- Based on using only satellites transmitting standard code and indicating "healthy" in the broadcast navigation message.

The following plot shows the daily PDOP availability ($PDOP < 6$) calculated at the site for all healthy satellites above 5 degrees elevation during the period October to December 2022.

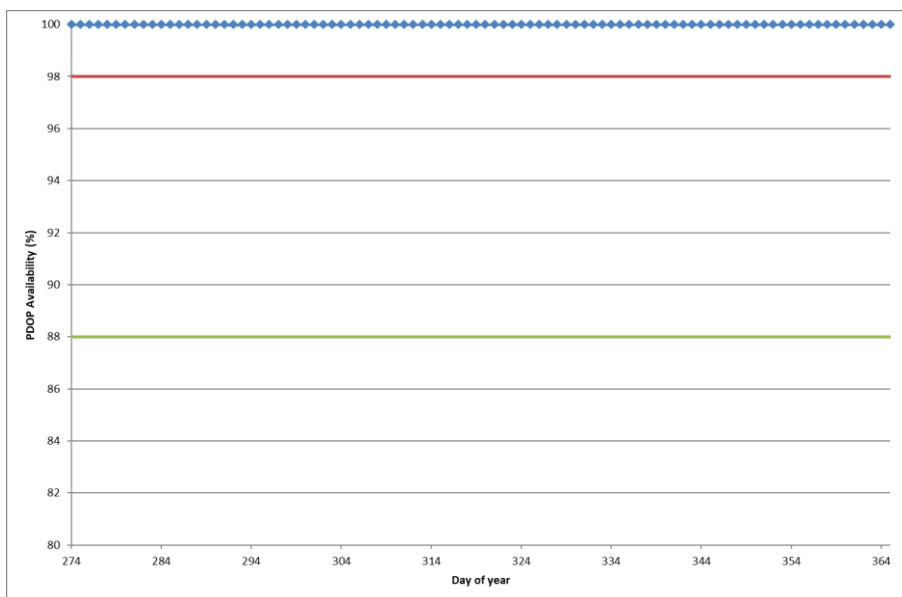


Figure 3-3: Daily PDOP Availability in the Reporting Period

It can be seen that the daily PDOP availability values are all above the thresholds of 98% (global average) and 88% (worst site). Therefore, the PDOP availability fulfils the requirements.

In addition, the daily mean and maximum PDOP values are displayed for the same period.

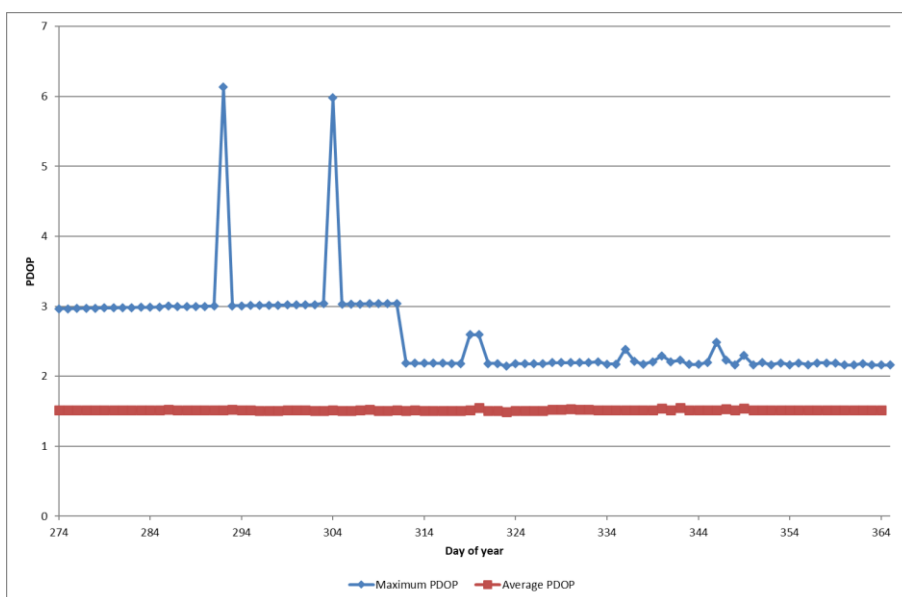


Figure 3-4: Daily Maximum PDOP Value in the Reporting Period

The daily PDOP values PDOP can be used to identify specific days that have different performance from the others. It can be seen is that the maximum PDOP is usually well below the threshold of 6. The two days where the maximum PDOP is close to or just above 6 are 19th and 31st October, where there are brief periods affected by a sudden drop in the number of satellites (most likely due to local interference) which causes a spike in the PDOP at those times.

3.7. POSITION SERVICE AVAILABILITY

In addition to the specifications in Table 2-1, the Conditions and Constraints for Service Availability performance [RD.1] are:

- 15 meters horizontal (SIS only) 95% threshold;
- 33 meters vertical (SIS only) 95% threshold;
- Defined for position solution meeting representative user conditions and operating within the service volume over any 24-hour interval;
- Based on using only satellites transmitting standard code and indicating “healthy” in the broadcast navigation message.

The computation of these values is detailed in section 2.3.

The daily horizontal and vertical service availabilities for the period October to December 2022 are shown in the following figures.

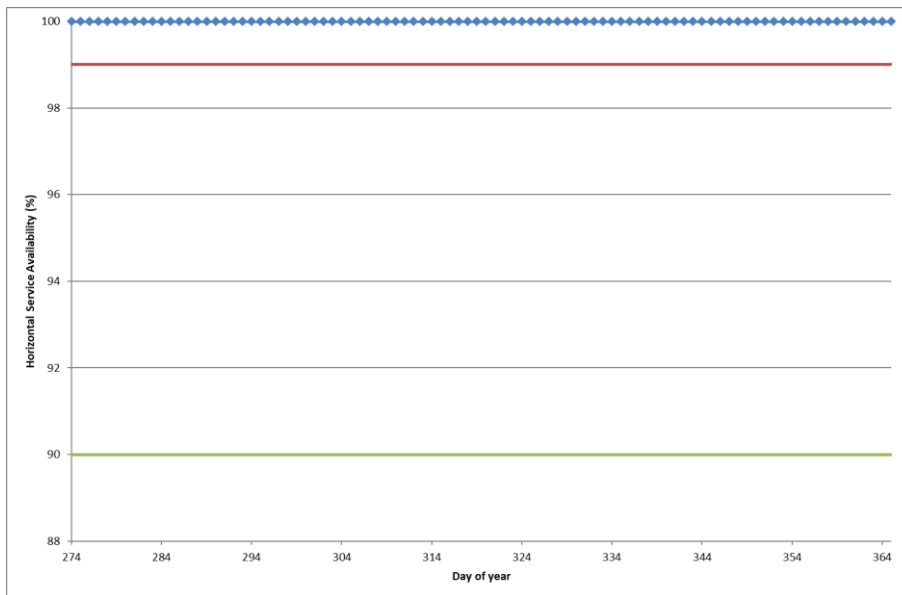


Figure 3-5: Daily Horizontal Service Availability Values for Reporting Period

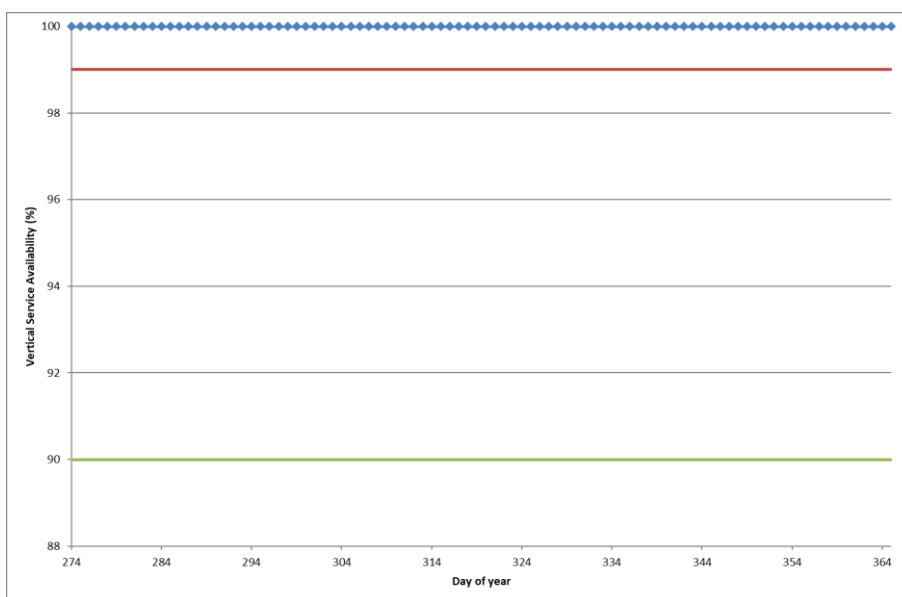


Figure 3-6: Daily Vertical Service Availability Values for Reporting Period

These plots show the horizontal and vertical availability are well above the thresholds of 99% (global average) and 90% (worst site) for the reporting period. Therefore, the position service availability fulfils the requirements.

3.8. POSITIONING ACCURACY

In addition to the specifications in Table 2-1, the Conditions and Constraints for Positioning Accuracy performance [RD.1] are:

- Defined for position solution meeting the representative user conditions;
- Standard based on a measurement interval of 24 hours averaged over all points within the service volume.

For this monitoring activity it should be noted that the position accuracy is assessed through analysis of real data at a single point, rather than through service volume analysis.

The daily horizontal and vertical accuracy values (95%) for the period October to December 2022 are shown in the following figures.

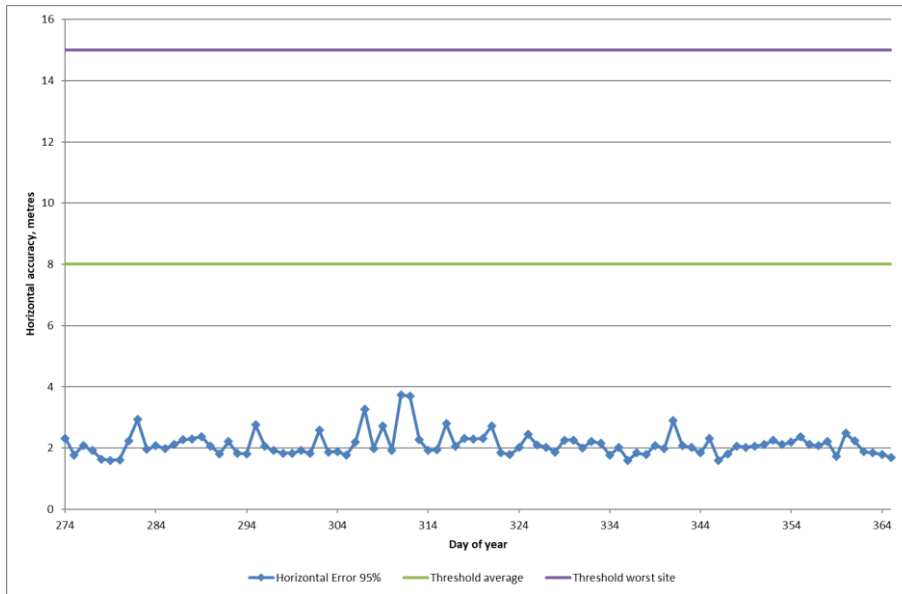


Figure 3-7: Daily Horizontal Position Accuracy (95%) for Reporting Period

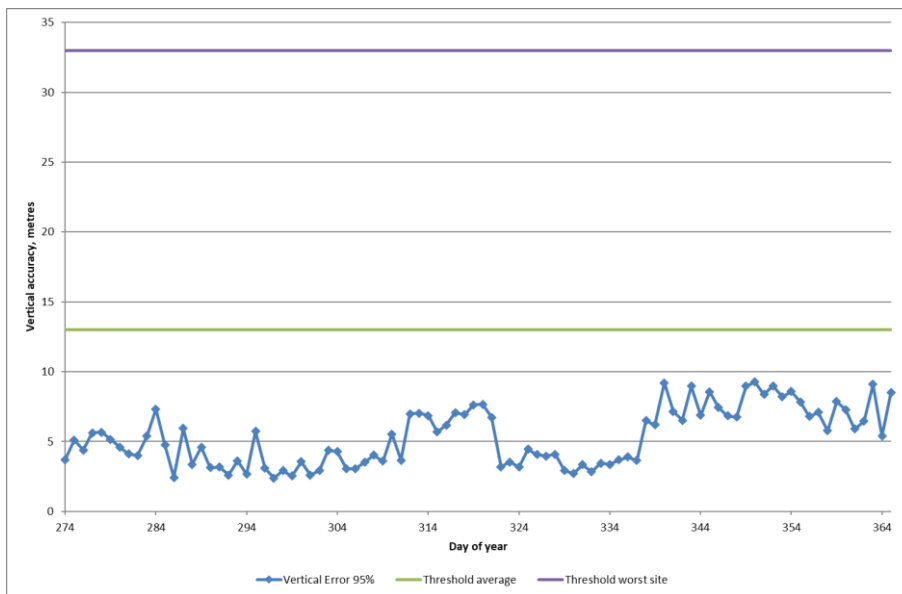


Figure 3-8: Daily Vertical Position Accuracy (95%) for Reporting Period

It can be seen that the daily horizontal accuracy values are all below the thresholds of 8m (global average) and 15m (worst site).

Also, the daily vertical accuracy values are well below the thresholds of 13m (global average) and 33m (worst site).

In addition, the daily position accuracy values at the 99.99% level are shown for the same period.

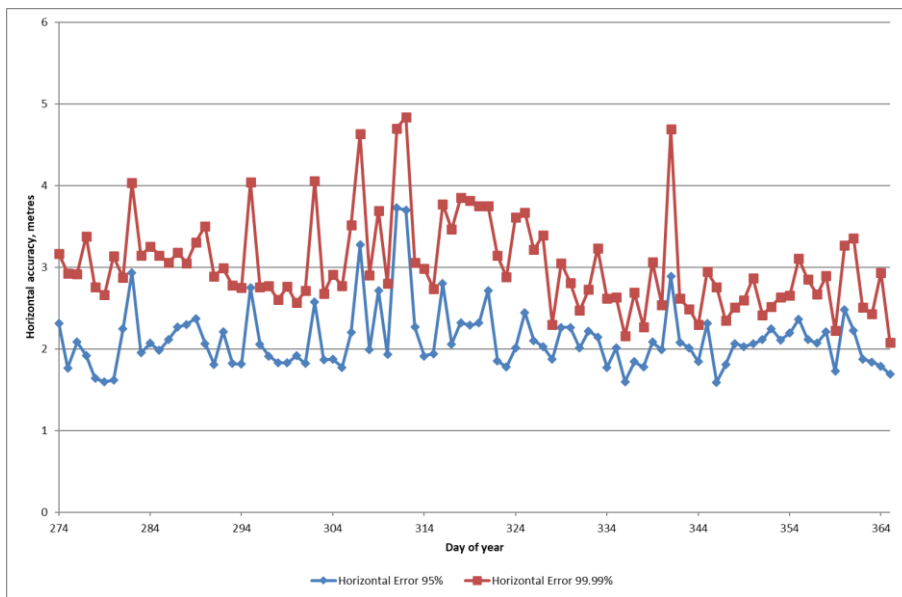


Figure 3-9: Daily Horizontal Position Accuracy (99.99%) for Reporting Period

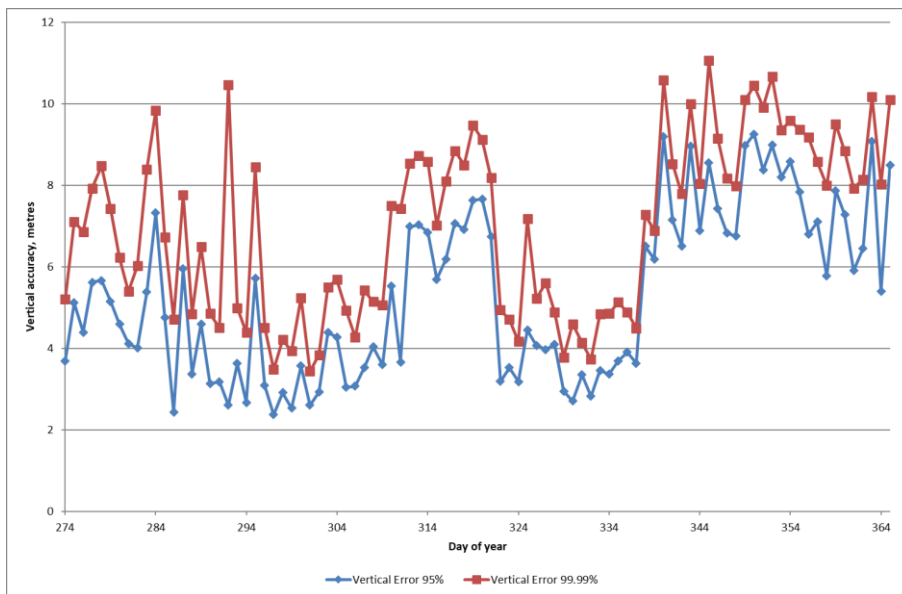


Figure 3-10: Daily Vertical Position Accuracy (99.99%) for Reporting Period

It can be seen that on most days the 99.99% values generally follow the same pattern as the 95% values and are not significantly larger.

4. NANU ANALYSIS

(<http://www.navcen.uscg.gov/?pageName=gpsNanuInfo>). Summaries of the forecast and actual outages for scheduled and unscheduled events are given below. NANUs that affect a whole slot in the baseline constellation are highlighted in green. NANUs that affect one satellite of an expanded slot in the baseline constellation are highlighted in blue, tan, orange, red or purple.

Table 4-1: Summary of Forecast Scheduled Outages

NANU	PRN	Type	Start day	Start Time	Stop day	Stop time	Outage (hours)	Ref
2022060	3	FCSTDV	279	1425	280	225	12	E1
2022062	25	FCSTMX	284	730	284	1400	6.5	B2
2022063	25	FCSTMX	285	730	285	1400	6.5	B2
2022064	32	FCSTMX	286	1430	286	2030	6	F1
2022068	32	FCSTEXTD	286	1430	UFN	NA	NA	F1
2022071	24	FCSTMX	291	1430	291	2000	5.5	A1
2022072	9	FCSTMX	291	2200	292	100	3	F3
2022073	3	FCSTMX	292	1900	292	2300	4	E1
2022074	27	FCSTMX	292	2230	293	300	4.5	C2
2022075	26	FCSTMX	293	2000	294	0	4	B1F
2022076	8	FCSTMX	294	0	294	400	4	C3
2022077	10	FCSTMX	294	1350	294	1700	3.5	E2
2022078	1	FCSTMX	294	1730	294	2130	4	D2A
2022088	30	FCSTMX	306	2355	307	1155	12	A3
2022089	12	FCSTMX	307	555	307	1755	12	B4
2022090	17	FCSTMX	308	0	308	1200	12	C4F
2022091	29	FCSTMX	308	845	308	2045	12	C1
2022092	5	FCSTMX	311	1130	311	1315	1.75	E3A
2022105	5	FCSTRESCD	311	1000	311	2200	12	2022092
2022093	15	FCSTMX	311	1315	311	1500	1.75	F2A
2022106	15	FCTSRESCD	311	1200	312	0000	12	2022093
2022094	31	FCSTMX	313	1945	313	2145	2	A2
2022107	31	FCSTRESCD	313	1945	314	0745	12	2022094
2022095	2	FCSTDV	314	100	315	100	24	D5
2022100	29	FCSTUUFN	308	843	NA	NA	NA	C1
2022110	7	FCSTMX	318	2200	319	1000	12	A4
2022111	6	FCSTMX	319	415	319	1615	12	D4
2022114	15	FCSTMX	320	1100	320	2300	12	F2A
2022118	31	FCSTMX	340	1000	341	1000	24	A2
2022119	26	FCSTMX	342	1300	343	1300	24	B1F
2022121	23	FCSTMX	347	1100	348	1100	24	E4

NANU	PRN	Type	Start day	Start Time	Stop day	Stop time	Outage (hours)	Ref
2022122	19	FCSTDV	349	1730	350	530	12	C4A
2022125	19	FCSTRESCD	354	1645	355	0445	12	2022122
2022124	31	FCSTMX	349	1000	350	1500	29	A2

Table 4-2: Summary of Actual Scheduled Outages

NANU	PRN	Type	Start day	Start Time	Stop day	Stop time	Outage (hours)	Ref
2022061	3	FCSTSUMM	279	1428	279	2019	5.85	2022061
2022066	25	FCSTSUMM	284	809	284	1309	5.0000	2022062
2022067	25	FCSTSUMM	285	802	285	1238	4.6000	2022063
2022069	32	FCSTSUMM	286	1523	286	2057	5.5667	2022068
2022079	24	FCSTSUMM	291	1452	291	1707	2.2500	2022071
2022080	9	FCSTSUMM	291	2220	292	6	1.7666	2022072
2022081	3	FCSTSUMM	292	1923	292	2055	1.5333	2022073
2022082	27	FCSTSUMM	292	2352	293	54	1.0333	2022074
2022083	26	FCSTSUMM	293	2144	293	2337	1.8833	2022075
2022084	8	FCSTSUMM	294	17	294	122	1.0833	2022076
2022085	10	FCSTSUMM	294	1418	294	1555	1.6166	2022077
2022087	1	FCSTSUMM	294	1803	294	1954	1.85	2022078
2022096	30	FCSTSUMM	307	19	307	155	1.6	2022088
2022097	12	FCSTSUMM	307	555	307	832	2.6166	2022089
2022098	17	FCSTSUMM	308	417	308	649	2.5333	2022090
2022108	5	FCSTSUMM	311	1008	311	1222	2.2333	2022105
2022109	15	FCSTSUMM	311	1211	311	1344	1.55	2022106
2022112	31	FCSTSUMM	313	1947	313	2056	1.15	2022107
2022113	2	FCSTSUMM	314	110	314	735	6.4166	2022095
2022115	7	FCSTSUMM	318	2200	319	315	5.25	2022110
2022116	6	FCSTSUMM	319	424	319	536	1.2	2022111
2022117	15	FCSTSUMM	320	1118	320	2020	9.0333	2022114
2022120	31	FCSTSUMM	340	1033	341	410	17.616	2022118
2022123	26	FCSTSUMM	342	1330	343	343	14.2166	2022119
2022126	23	FCSTSUMM	347	1100	347	2350	12.8333	2022121
2022128	19	FCSTSUMM	354	1744	354	2305	5.35	2022125
2022127	31	FCSTSUMM	349	1023	350	306	16.7166	2022124

Table 4-3: Summary of Cancelled Outages

NANU	PRN	Type	Start day	Start Time	Stop day	Stop time	Ref
2022070	32	FCSTCANC	287	1430	287	2030	2022065

NANU	PRN	Type	Start day	Start Time	Stop day	Stop time	Ref
2022099	29	FCSTCANC	308	0845	308	2045	2022091
2022102	29	FCSTCANC	308	0843	NA	NA	2022100

Table 4-4: Summary of Forecast and Actual Unscheduled Outages

NANU	PRN	Type	Start day	Start Time	Stop day	Stop time	Outage (hours)	Ref
2022103	29	UNUNOREF	308	843	308	1032	1.816666667	C1

It is noted that the unscheduled outage was actually released to replace an erroneous scheduled outage. NANU 2022100 was a scheduled unusable NANU, that was apparently closed by 2022101. But this was cancelled by NAN2022102 and the unscheduled 2022103 was released in its place.

The constellation availability and continuity figures for the baseline constellation, and for all satellites, based on the NANU information are shown in the following table. Note that for continuity and availability, the baseline constellation is affected if at least one of the satellites in an expanded slot is healthy, i.e. an outage on one of the satellites in an expanded slot still affects the statistics for the baseline constellation.

Table 4-5: Summary of NANU Statistics for Monitoring Period

	Q4 2022
Hrs	2208
total forecast downtime (all)	326.50
total forecast downtime (baseline)	302.50
total actual scheduled downtime (all)	134.35
total actual scheduled downtime (baseline)	127.93
Scheduled satellite outage events (all)	27
Scheduled satellite outage events (baseline)	26
Unscheduled satellite outage events (all)	1
Unscheduled satellite outage events (baseline)	1
Total actual unscheduled downtime (all)	1.82
Total actual unscheduled downtime (baseline)	1.82
Total actual downtime (all)	136.17
Total actual downtime (baseline)	129.75
Availability (all)	99.801
Availability (baseline)	99.755
Continuity (baseline)	99.996

5. CONCLUSIONS

The following table summarises the measured performance against the specification.

Table 5-1: Summary of Performance

Criteria	Specifications	Measured Performance	Passed
SPS SIS Accuracy	The User Range Error (URE) ≤ 7 m 95% for any satellite	All but one SV < 7 m	No. Although seems to be due to higher than usual ionospheric residuals
	The User Range Error (URE) ≤ 2 m 95% for all satellites	4m	No. Although due to higher than usual ionospheric residuals
SPS SIS rms	≤ 3.6 m	All days < 3.6 m	Yes.
SPS SIS Integrity	The SIS Integrity $\leq 1 \times 10^{-5}$ Probability Over Any Hour (< 0.7 events per quarter)	No SIS events	Yes Multiple events are detected but they appear to be multipath rather than SIS events
SPS SIS Continuity	≥ 0.9998 Probability Over Any Hour	99.996% (1 outage on baseline) 99.885% for rolling year	Yes for monitoring period. No for rolling year.
SPS SIS Availability	SPS SIS Per-Slot Availability <ul style="list-style-type: none"> ≥ 0.957 SPS SIS Constellation Availability <ul style="list-style-type: none"> ≥ 0.98 Probability that at least 21 Slots out of the 24 Slots will be healthy ≥ 0.99999 Probability that at least 20 Slots out of the 24 Slots will be healthy ≥ 0.95 Probability that the Constellation will have at least 24 Operational Satellites 	1) 99.75% per-Slot Availability 2) 100% Constellation Availability 3) 100% probability that the number of operational satellites is larger than 24.	Yes, for both monitoring period and rolling year.
PDOP Availability	<ul style="list-style-type: none"> $\geq 98\%$ global PDOP of 6 or less $\geq 88\%$ worst site PDOP of 6 or less 	$> 99.8\%$ availability on all days	Yes

Criteria	Specifications	Measured Performance	Passed
SPS Position Service Availability	<ul style="list-style-type: none"> • $\geq 99\%$ Horizontal Service Availability average location • $\geq 90\%$ Horizontal Service Availability worst-case location • $\geq 99\%$ Vertical Service Availability average location • $\geq 90\%$ Vertical Service Availability worst-case location 	100% availability on all days	Yes
Positioning Accuracy	<ul style="list-style-type: none"> • ≤ 8 meters 95% All-in-View Global Average Horizontal Error (SIS Only) • ≤ 15 meters 95% All-in-View worst site Horizontal Error (SIS Only) • ≤ 13 meters 95% All-in-View Global Average Vertical Error (SIS Only) • ≤ 33 meters 95% All-in-View worst site Vertical Error (SIS Only) 	1) < 4 metres 95% Horizontal Error at the site 2) < 10 metres 95% Vertical Error at the site	Yes

From the table it can be seen that the measured performance is within the required values for almost all requirements. The exceptions are the SIS accuracy, which is because the processing results still include contributions such as ionospheric residual errors which appear larger than usual for most of December, and the SIS continuity requirement, due to several unscheduled outages in this rolling year.

ANNEX A. GEOMAGNETIC DATA

The solar activity during a particular period can be determined using the K index data provided by the British Geological Survey (BGS) in the UK. This data is available from http://www.geomag.bgs.ac.uk/data_service/data/magnetic_indices/k_indices.html. The K index at each observatory summarises the geomagnetic activity by assigning an index value (in the range 0 – 9) to each 3-hr time interval. The index values are determined from the maximum range in H or D with allowance made for the normal (undisturbed) diurnal variation. The conversion from range to index value is made using a quasi-logarithmic scale, with the scale values dependent on the geomagnetic latitude of the observatory. In general, the higher the K index the more active the Earth’s magnetic field. K-index values of 5 or higher indicate geomagnetic storm level activity and index values of 7 or higher indicate a severe geomagnetic storm. The geomagnetic activity is important to consider for GPS signals as geomagnetic storms may affect GPS performance, either by increasing the residual ionospheric delay errors in the position solution or by causing problems with tracking the satellite signals. The following figures show the K-index values at 3 sites in the UK during the monitoring period. The figures are reproduced with the permission of the British Geological Survey ©NERC. All rights reserved.

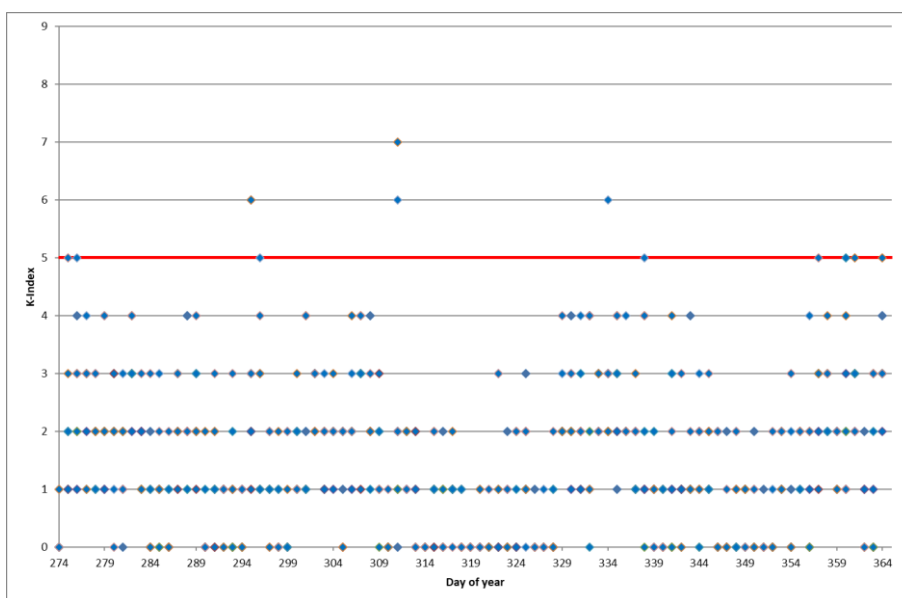


Figure 5-1: K-Index Values at Lerwick during Reporting Period

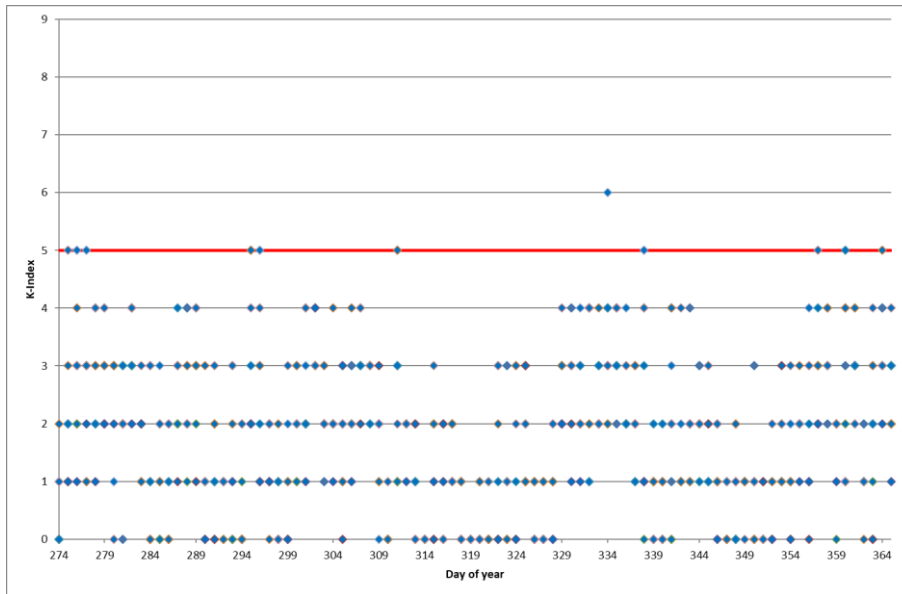


Figure 5-2: K-Index Values at Eskdalemuir during Reporting Period

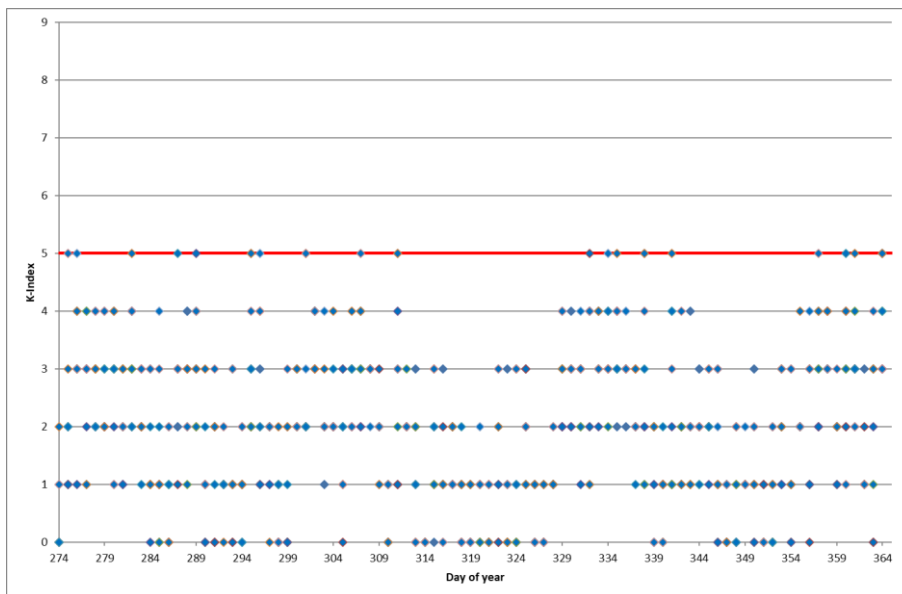


Figure 5-3: K-Index Values at Hartland during Reporting Period

It can be seen that during the monitoring period there are a few occasions where geomagnetic storm conditions ($K \text{ index} \geq 5$) are observed but generally it is a quiet period.

ANNEX B. ANALYSIS OF HIGH SIS ERRORS

As seen in section 3.2, the analysis of SIS accuracy showed some satellites with large 95% SIS accuracy and one satellite where the threshold of 7m was exceeded. This could indicate a failure of the SIS accuracy requirements.

In addition, the daily rms SIS accuracy and the vertical positioning error (see section 3.8) show some increase in errors after 4th December, which suggests this period has higher than expected errors.

It is noted that the analysis of the errors uses GPS L1 measurements and are affected by propagation errors as well as Signal In Space errors, whereas the performance requirements in the specification consider only SIS errors. Therefore before raising an issue it is necessary to perform some further analysis to determine the likely cause of the errors.

Firstly, we look in more detail at the errors to see if there are particular events or a general period where errors are degraded. As noted from the position error plots, there is a general increase in error after 4th December. If we therefore assess the SIS accuracy before this period and compare it with the figures for the whole period then we can see if that has an effect. The following figures show the 95% SIS accuracy for the whole period (left) and for the period up until 4th December (right). It can clearly be seen that the SIS accuracy is much improved if we consider the short period, indicating that the issue is in the period after 4th December.

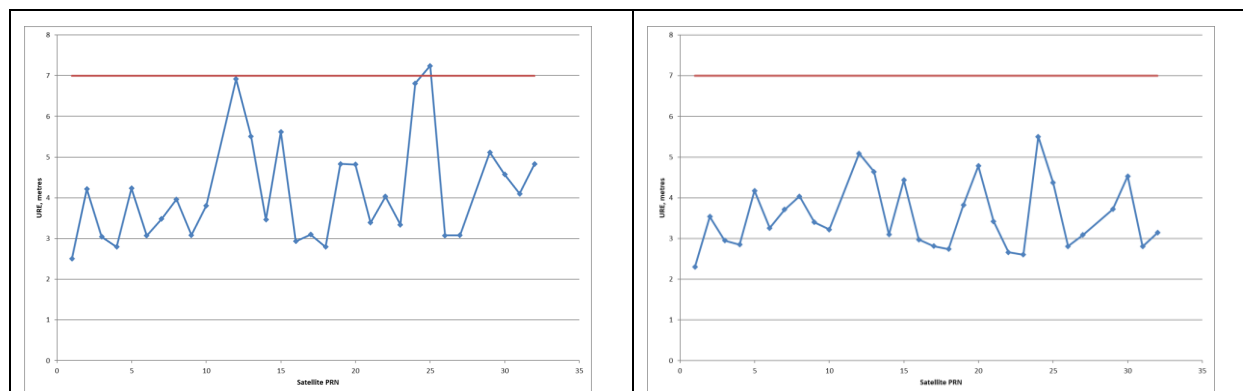


Figure 5-4: Constellation URE (95%) for Reporting Period (left) and Period up until 4th December (right)

In the next plot we look at hourly statistics rather than daily statistics in order to see the errors with greater fidelity. The mean and 95% hourly horizontal and vertical errors are shown throughout December.

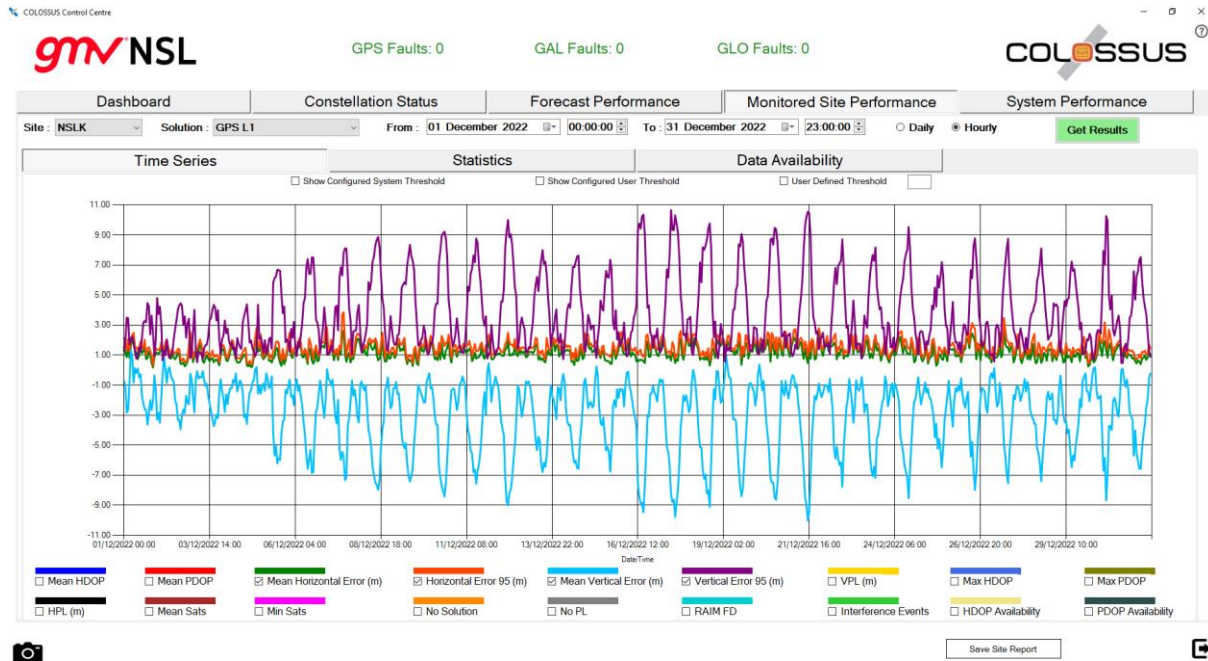


Figure 5-5: Hourly Horizontal and Vertical Error Statistics for GPS L1 during December 2022

It can be clearly seen that the hourly error statistics are smaller at the start of December before increasing, and also that there is a distinct pattern with the errors being smaller during the night and larger during the afternoon. This pattern, and the fact that vertical errors are affected more than horizontal, suggests increased residual ionospheric errors. This is confirmed by looking at the equivalent plot for a dual frequency GPS L1/L2 solution below.



Figure 5-6: Hourly Horizontal and Vertical Error Statistics for GPS L1/L2 during December 2022

For dual frequency (L1/L2) results, the hourly error statistics show more noise like behaviour and do not reach the same magnitude as for the GPS L1 solution. This confirms the higher errors during this

period are due to increased ionospheric residuals rather than SIS errors, as an error in satellite orbit or clock failure, for example, would affect both single frequency and dual frequency solutions. Whether this is due to particularly active ionospheric activity or simply poor broadcast ionospheric model parameters is unclear at this stage. Nevertheless, it does confirm that the apparent degraded SIS accuracy performance is due to ionosphere rather than SIS errors and so does not constitute a failure of the SIS accuracy per satellite requirement.



Code: GMVNSL_CAA-GPS-SPS-Q4-22
Date: 13/01/23
Version: 1.0
Page: 34 of 34

END OF DOCUMENT